



Council of the European Union  
General Secretariat

**REDACTED DOCUMENT ACCESSIBLE  
TO THE PUBLIC (28.03.2025).  
ONLY MARGINAL PERSONAL DATA  
HAVE BEEN REDACTED.**

**Brussels, 17 January 2025**

**WK 557/2025 INIT**

**LIMITE**

**GLOBAL GATEWAY  
COASI  
COEST  
COAFR  
MED**

**MAMA  
COLAC  
COWEB  
COMPET  
ECOFIN  
FIN**

**CCG  
TRANS  
ENER  
ENV  
DEVGEN  
DIGIT**

*This is a paper intended for a specific community of recipients. Handling and further distribution are under the sole responsibility of community members.*

## **MEETING DOCUMENT**

---

From:	European Commission
To:	Working Party of Foreign Relations Counsellors (RELEX) – Horizontal Questions
Subject:	Global Gateway 360° Degree Approach Presentation

---

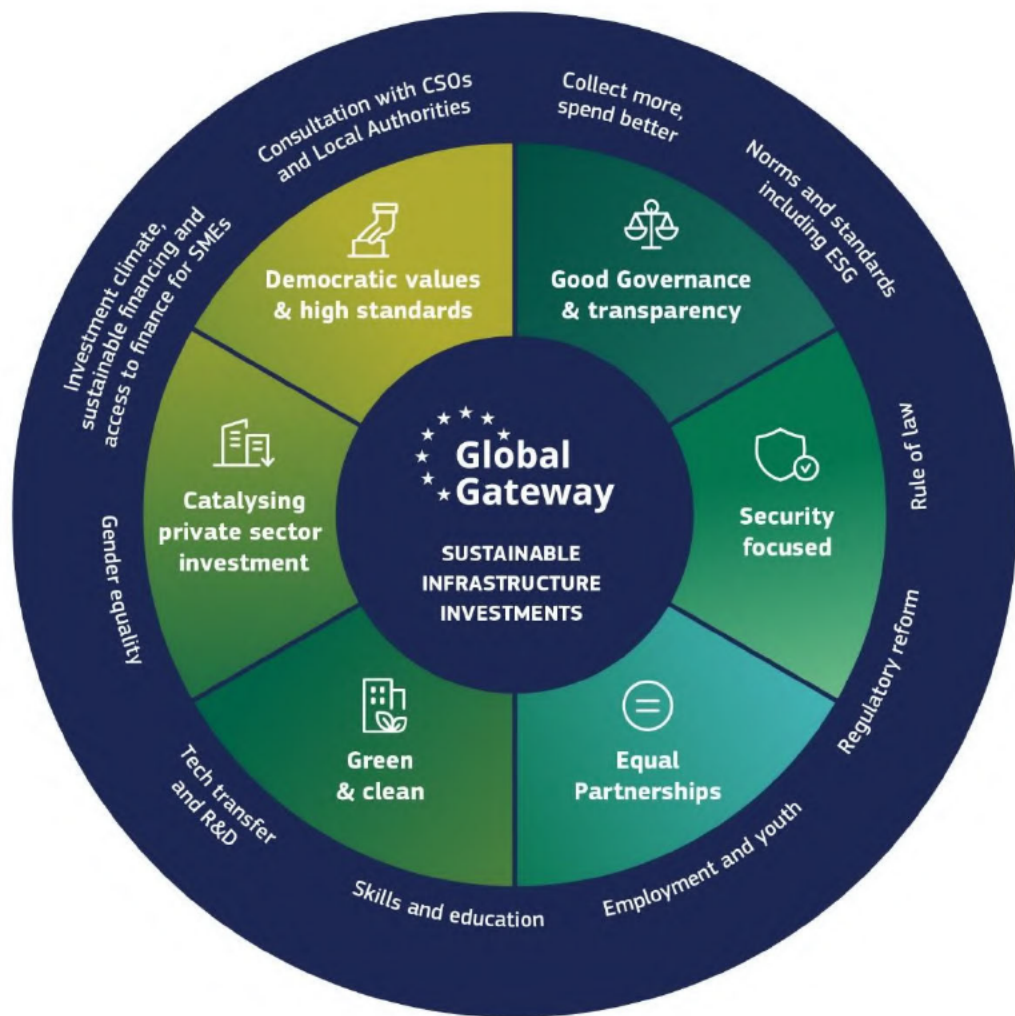


# Global Gateway 360° approach

*RELEX HQ Working Party 17 January 2025*

 *INTPA D1*

# Global Gateway 360-degree approach



The 360-degree approach is about:

- The systematic application of the 6 key [GG principles](#), including green and clean, equal partnerships, democratic values and high standards, good governance and transparency, security focused and catalysing the private sector.
- Creating an [enabling environment](#) (regulatory frameworks, norms and ESG standards, technology transfer, know-how, skills and education, etc)

Not about ticking boxes, but rather about analysing different dimensions from the identification/design phase of each flagship to identify opportunities and risks and, if necessary, accompanying or mitigating measures.

It requires a [whole-of-Delegation](#) and [Team Europe approach](#) combining a [mix of modalities](#) and [tools](#) (RMF+, Greening Toolbox, CAS, CSO Roadmaps, GAPIII CLIPs, environmental impact assessments, ...)

# Examples: MAV+

PUBLIC

- Promote local manufacturing of vaccines in Africa (Rwanda, Senegal, South Africa, Ghana). First mRNA facility opened in Kigali in December 2023
- Sustainable ecosystem around investments through the 360-degree approach:
  - Regulatory strengthening
  - Support to WHO's mRNA technology transfer hub in South Africa with spokes around the world
  - Access to finance for SMEs working on biotechnology development
  - Supports to development of MSc and PhD programmes in biotechnology at the University of Rwanda and clinical trials
  - Green energy sources (captive solar photovoltaic) for production plants and including wastewater treatment infrastructure

# Examples: Green Amazon

- Foster connectivity as a driver for social inclusion and forest preservation, benefiting 2.5 million people in 4000 remote locations of Brazil's Amazon. satellites, towers, stations and user terminals.
- Enabling environment:
  - Business and Human Rights/Responsible Business Practices
  - TE platform to facilitate degraded forest and land restoration and the upscaling of private sector participation
  - Enhancing Brazil's digital regulation and governance and tackling equal access and digital gender gap

# Thank you

PUBLIC