



Council of the European Union  
General Secretariat

**Brussels, 27 February 2026**

**WK 3309/2026 INIT**

**LIMITE**

**SOC  
ENV  
CLIMA  
ENER**

**ECOFIN  
COMPET  
RECH  
EDUC  
CULT**

*This is a paper intended for a specific community of recipients. Handling and further distribution are under the sole responsibility of community members.*

**NOTE**

---

From: General Secretariat of the Council  
To: Delegations

---

Subject: New European Bauhaus - from vision to implementation

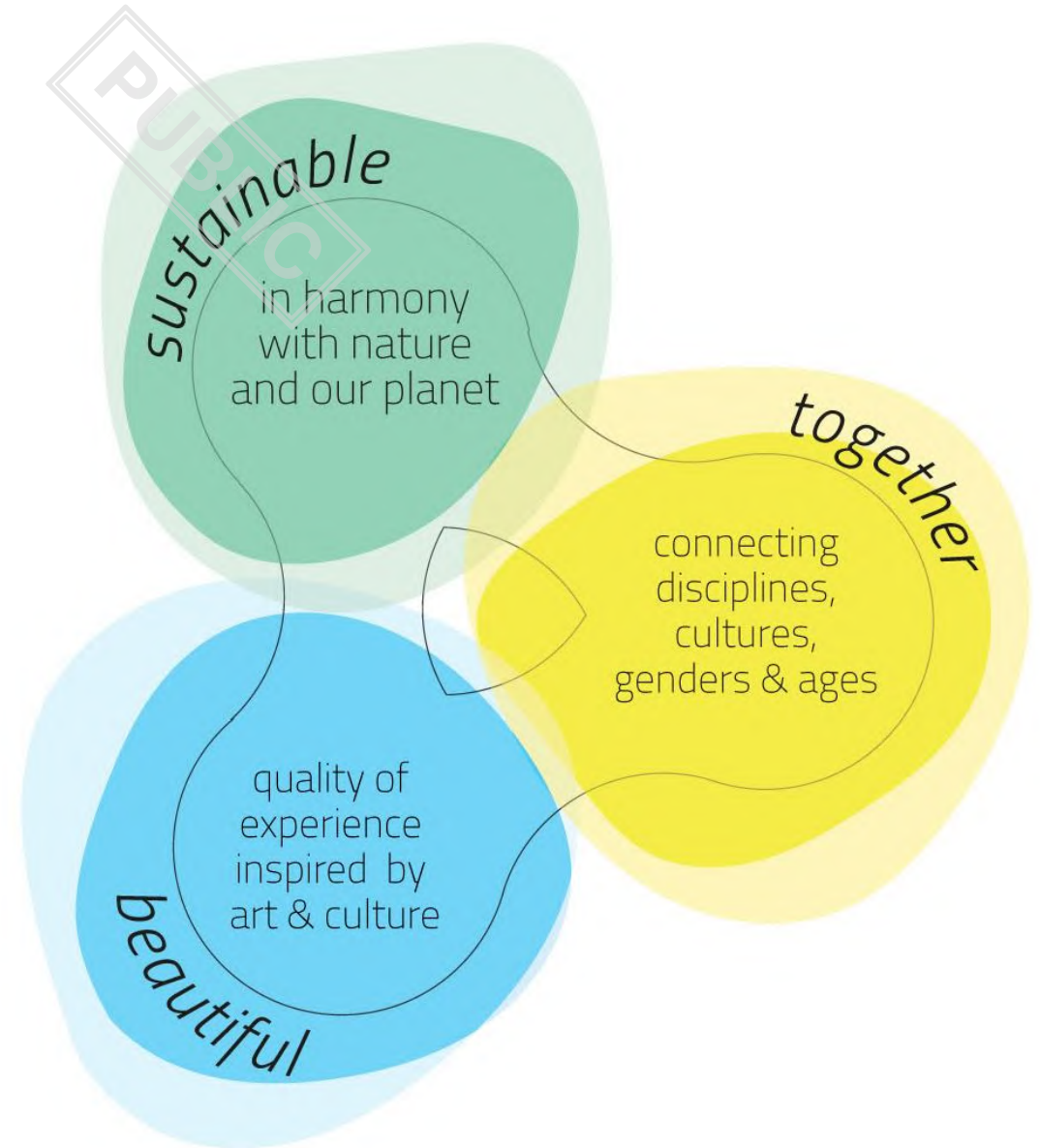
---

The delegations will find attached the presentation on the above-mentioned subject given by the European Commission at the meeting of the Social Questions Working Party of 27 February 2026.

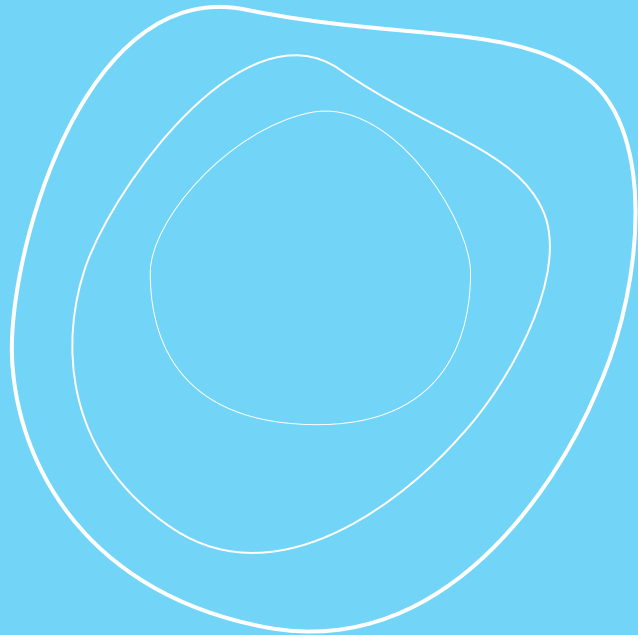
# THE NEW EUROPEAN BAUHAUS (NEB)

Working Party on Social Questions

27 February 2026



PUBLIC



# Part 1

## 5 years of NEB and the NEB in the new Commission



# January – June 2021: 6 months of co-design open to all

PUBLIC

How do we want to *live together* after the pandemic?



18 JANUARY

launch of co-design phase

beautiful | sustainable | together

350 000  
Website visits

20 000  
Newsletter subscribers

12 000  
Instagram followers

2 000  
Your contributions

200  
Official partners

200+  
Partners activities



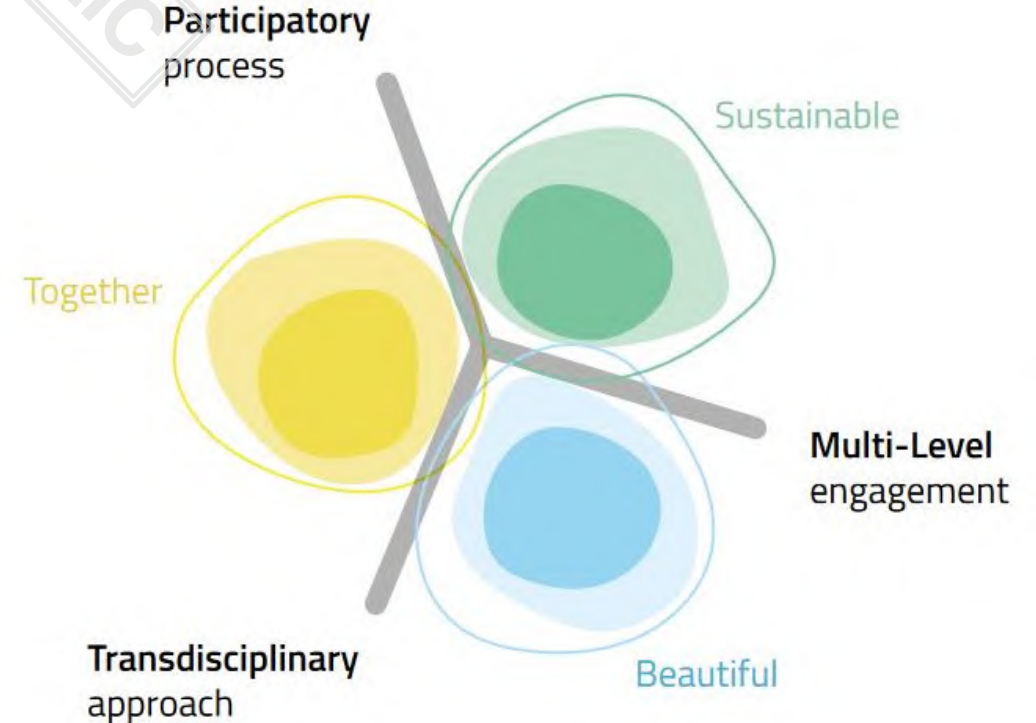
# What is the New European Bauhaus?

The **New European Bauhaus** (NEB) is an initiative launched by the European Commission in 2021 with the aim of translating **the European Green Deal** into tangible change on the ground that improves citizens' daily life and accelerates the green transition.

NEB promotes an **integrated approach** to the Green Transition of our economy and societies, building on:

**3 Values**

**3 Working Principles**



# What have we achieved since 2020?

- ✓ **NEB Community** across Europe
- ✓ **Bottom-up initiatives and funding projects**
- ✓ **NEB objectives in EU programmes and policies**, and within the European Commission
- ✓ **Tools guidelines** to support NEB projects (i.e. NEB Compass, Investment guidelines)
- ✓ **Awareness, mobilisation, sharing of best practices**

**2,000**

Members of the  
NEB Community

**700**

projects

**840** million  
from Cohesion

**530** million from  
Horizon Europe

**9**

EU programmes  
supporting NEB

# NEB in action: flagship projects

NEB good practices to strengthen local democracy and connect communities



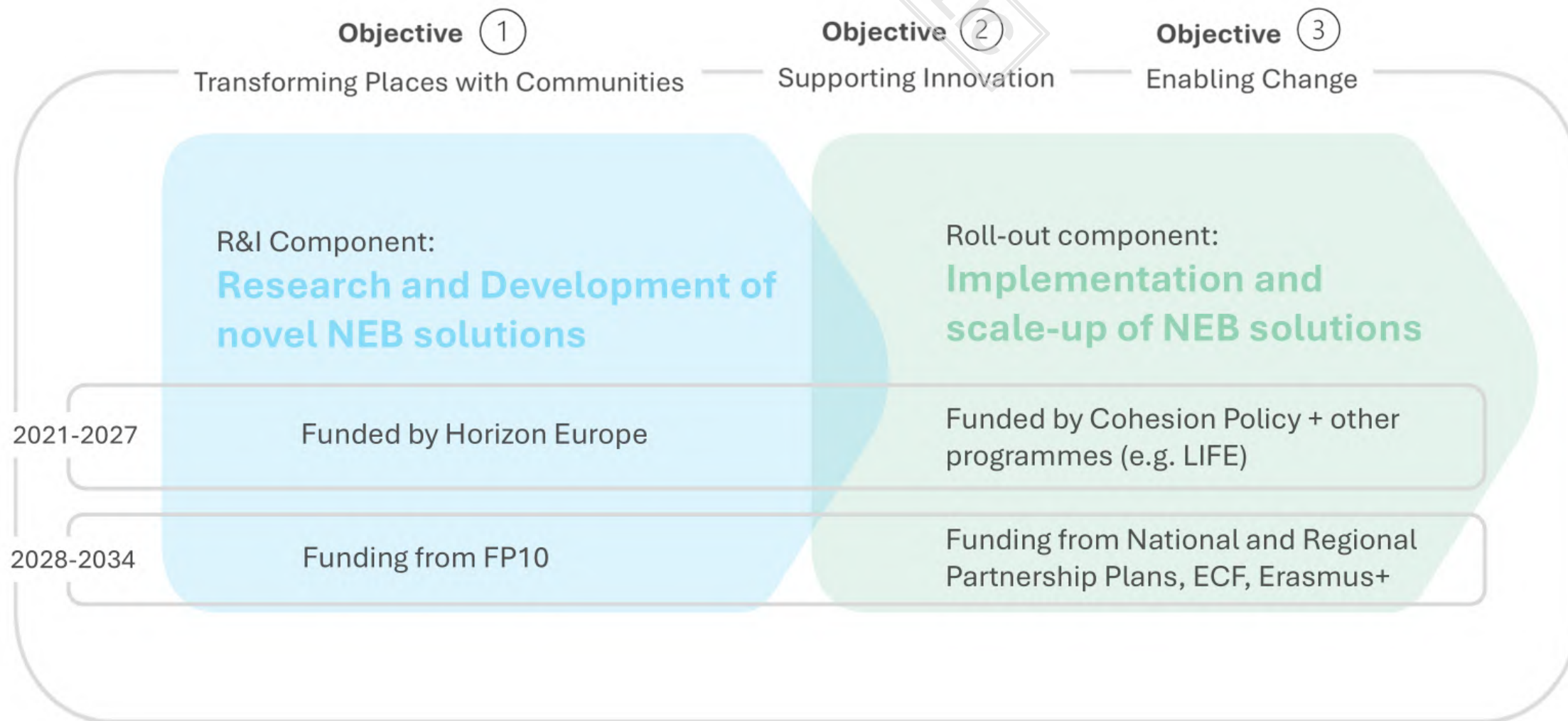
© NEB STAR – SOFTAcademy © SvenZacek – ©ASDpublics

**NEB-STAR:** creates governance and financing models to reuse buildings, prevent gentrification and democratise urban development [Horizon Europe].

**SOFTAcademy:** renovates Soviet-era prefabricated apartment buildings in Tallinn with a holistic and neighbourhood-level approach [ERDF]

**Activating Spaces with neuroDiverse Publics:** helps public authorities in Barcelona improve playgrounds and public areas for children with autism [EIT Community NEB].

# Funding the NEB: the NEB Facility



# R&I towards objective 1

**Destination: Connecting the green transformation, social inclusion and local democracy**

**Opening: 5 May 2026 Closing: 1 December 2026**

HORIZON-NEB-2026-01-PARTICIPATION-01: Addressing homelessness through housing-led approaches aligned with the New European Bauhaus

HORIZON-NEB-2026-01-PARTICIPATION-02: Innovative approaches for the spatial design of neighbourhoods

HORIZON-NEB-2026-01-PARTICIPATION-03: Understanding inhabitant's experiences of neighbourhoods to support their health and well-being

Find the 2026 topics here: <https://ec.europa.eu/info/funding-tenders/opportunities/portal/screen/opportunities/calls-for-proposals?order=DESC&pageNumber=1&pageSize=50&sortBy=startDate&isExactMatch=true&status=31094501,31094502,31094503&programmePeriod=2021%20-%202027&frameworkProgramme=43108390&callIdentifier=HORIZON-NEB-2026-01>

# R&I towards objective 2

**Destination: Circular and regenerative approaches for the built environment**

**Opening: 5 May 2026 Closing: 1 December 2026**

HORIZON-NEB-2026-01-REGEN-01: Sustainable, inclusive, affordable and beautiful solutions for thermal comfort in buildings

HORIZON-NEB-2026-01-REGEN-02: Advancing sustainable maintenance and repair measures for existing buildings

HORIZON-NEB-2026-01-REGEN-03: Innovative solutions for the sustainable and beautiful use of vertical space

Find the 2026 topics here: <https://ec.europa.eu/info/funding-tenders/opportunities/portal/screen/opportunities/calls-for-proposals?order=DESC&pageNumber=1&pageSize=50&sortBy=startDate&isExactMatch=true&status=31094501,31094502,31094503&programmePeriod=2021%20-%202027&frameworkProgramme=43108390&callIdentifier=HORIZON-NEB-2026-01>

# R&I towards objective 3

**Destination: Innovative funding and new business models for the transformation of neighbourhoods**

**Opening: 5 May 2026 Closing: 1 December 2026**

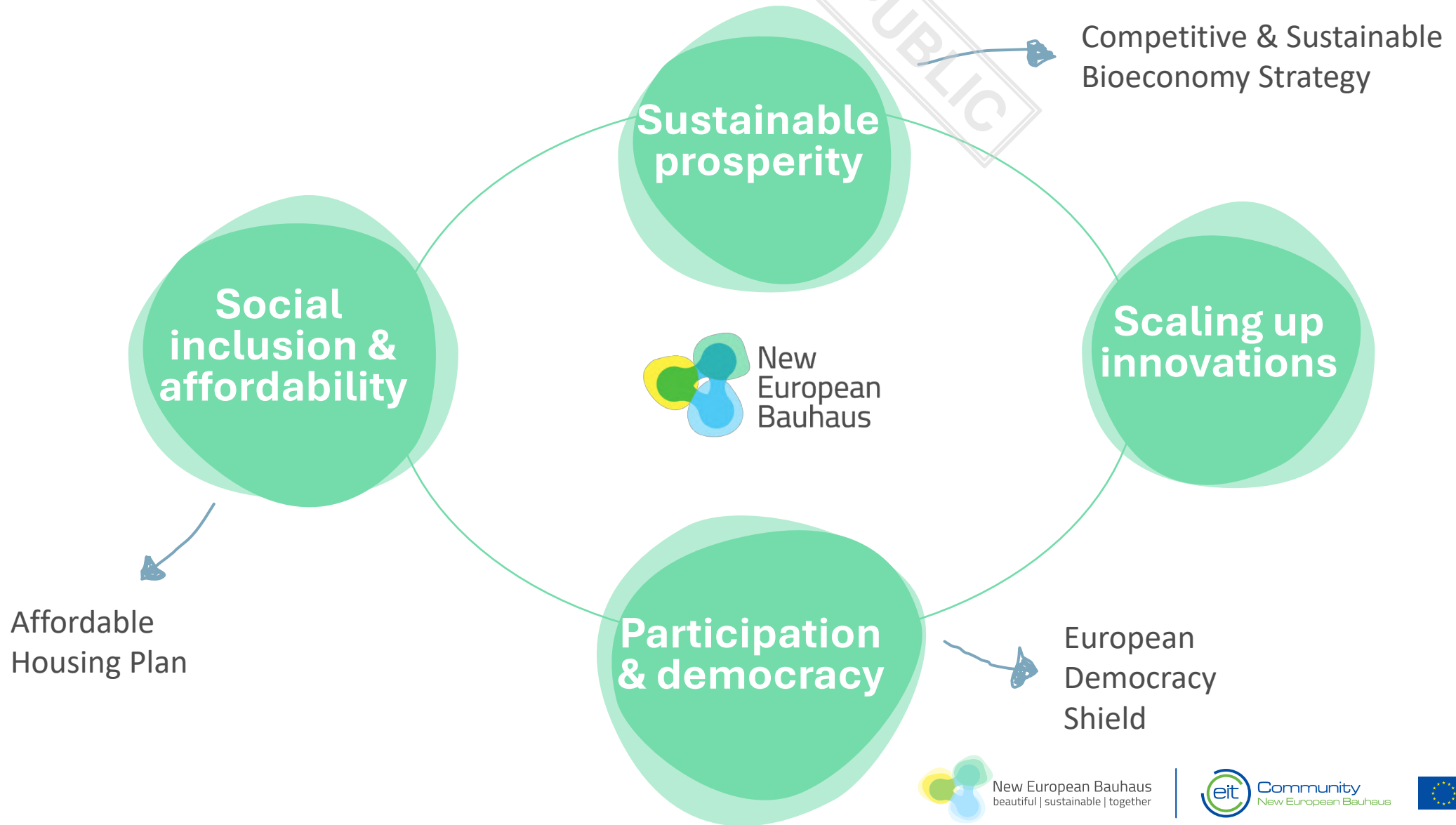
HORIZON-NEB-2026-01-BUSINESS-01: Structurally addressing homelessness through coordinated social infrastructure and services in neighbourhoods

HORIZON-NEB-2026-01-BUSINESS-02: Understanding capital market dynamics for increased investment in New European Bauhaus projects in neighbourhoods

HORIZON-NEB-2026-01-BUSINESS-03: Approaches to reuse vacant, obsolete or underutilised spaces

Find the 2026 topics here: <https://ec.europa.eu/info/funding-tenders/opportunities/portal/screen/opportunities/calls-for-proposals?order=DESC&pageNumber=1&pageSize=50&sortBy=startDate&isExactMatch=true&status=31094501,31094502,31094503&programmePeriod=2021%20-%202027&frameworkProgramme=43108390&callIdentifier=HORIZON-NEB-2026-01>

# NEB in current political priorities



# NEB in current political priorities

***“A home is not just four walls and a roof.  
It is safety, warmth, a place for family and friends.***

***This is more than a housing crisis.  
It is a social crisis.  
It tears at Europe's social fabric.***

***Still this year we will present the first ever  
European Affordable Housing Plan.  
To make housing more affordable,  
more sustainable, and of better quality.  
It will be a European effort, anchored  
in local realities.”***



# Affordable Housing Package – 16 December 2025

- ❖ European Affordable Housing Plan
- ❖ European Housing Construction Strategy
- ❖ **Commission Communication on the New European Bauhaus: from vision to implementation, and proposal for Council Recommendation**
- ❖ Revised EU State aid rules

## NEB Communication

Sets EU vision & priorities

Launches tools & initiatives

Mobilises EU funding & markets

Commission-led

## NEB Recommendation

Invites MS to act

Embeds NEB in national/regional frameworks

Strengthens multilevel governance

Member State-owned

### Key message

Together, they move NEB from inspiration to systemic change.



# Why a Council Recommendation

## The gap

- NEB already active, but **uneven uptake across Member States**
- Local impact depends on **national/regional frameworks**
- Communication alone cannot signal MS' role strongly enough

## Rationale

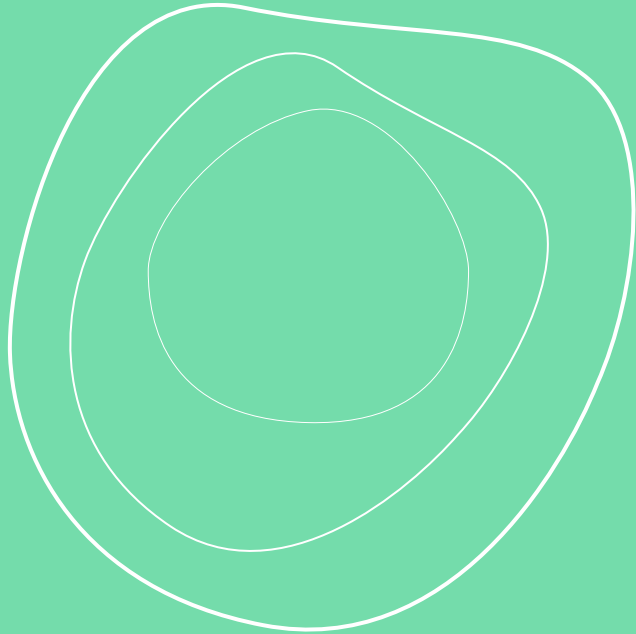
- Need for **political endorsement + coordination**
- Respect subsidiarity, avoid prescriptive legislation

## What it enables

- Alignment of national, regional, local actions
- Peer learning, replication, coherence



PUBLIC



## Part 2

# Core provisions

in the NEB Communication and Proposal  
for a Council Recommendation



# Three specific objectives of the Communication

- Enhancing **circularity, sustainability** and **innovation in the built environment** by supporting the circular economy and bioeconomy, promoting research, scaling up innovative solutions and reinforcing community resilience to natural disasters;
- Empowering citizens through **participatory processes** to strengthen **democratic, inclusive** and **resilient** neighbourhoods;
- Harnessing the transformative **power of education, arts** and **culture** to boost creativity and innovation for local transformation.



# Specific Objective 1: Environmental dimension

## COMMUNICATION

NEB as an **enabler for the clean transition**, enhancing **innovation, resilience and stability**:

- Fostering **innovative and sustainable solutions**, enhancing **circular economy** and the **bioeconomy** [industry dimension]
- Inclusive, sustainable and quality-driven **transformation of neighbourhoods**, including **resilience and crisis preparedness** [neighbourhood dimension]

## RECOMMENDATION

Enhance the **sustainability of the built environment**, including:

- A **clean, circular, climate-neutral and resilient, energy and water efficient** built environment
- A competitive and sustainable **bioeconomy** industry
- An **efficient use of the built environment** in spatial planning and development decisions
- **Crisis preparedness**
- **Digital solutions** for circularity and energy efficiency

# Communication



Enhance circularity, sustainability and innovation in the built environment



## Fostering innovative and sustainable solutions

Support the transition of the construction ecosystem towards low-carbon, circular and bio-based solutions, by:

- Developing a **NEB Label** to reward NEB projects and practices and increase their visibility with potential promoters and investors.
- Funding the development of **NEB demonstrators** for innovative solutions.
- **Supporting entrepreneurs and SMEs in NEB-relevant sectors**, helping them access funding to commercialise and scale up new solutions.



# Communication



## Enhance circularity, sustainability and innovation in the built environment

Inclusive, sustainable and quality-driven transformation of neighbourhoods

Boosting **resilience and preparedness to climate-related risks and natural disasters** of neighbourhoods by:

- ▶ Promoting **spatial planning** that integrates **low carbon, water-efficient, water resilient and nature-based solutions**
- ▶ **Capacity building and guidance**, from prevention to post-disaster recovery
- ▶ Promoting **AI-powered analytics** to enable data-driven decision-making

Promoting a **whole-life cycle approach to buildings** and prioritising a **better use of existing buildings through renovation or refurbishment** by:

- ▶ Providing **evidence and methodologies** on the decarbonisation of buildings and on prioritising the efficient use of the built environment.
- ▶ Fostering **procurement procedures that enable sustainable, inclusive and quality-led solutions.**



# Recommendation



## 2. ENHANCE SUSTAINABILITY OF THE BUILT ENVIRONMENT

(a) Promote a clean, circular, climate-neutral and resilient, energy and water efficient built environment and thereby support affordable and sustainable housing

(b) Develop solutions to unlock the untapped potential of a **competitive and sustainable bioeconomy industry**, supporting market acceptance and uptake and the smooth functioning of the internal market for job creation and growth, in particular for the built environment and textiles, as set out in the EU Bioeconomy Strategy

(c) Prioritise and incentivise an **efficient use of the built environment in spatial planning and development decisions**, with a view to promoting social and affordable housing, preventing spatial segregation and promoting the revitalisation of neighbourhoods, including in rural areas

# Recommendation



## 2. ENHANCE SUSTAINABILITY OF THE BUILT ENVIRONMENT

(d) Advance the NEB values and principles to strengthen neighbourhoods and communities' **crisis preparedness and resilience to health risks and natural disasters** caused by climate change and environmental degradation

(e) Incentivise the use of digital solutions for circularity and energy efficiency for a competitive clean transition

## Specific objective 2

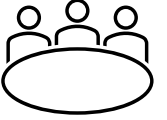
Empower citizens through participatory processes to build democratic, inclusive and resilient neighbourhoods

NEB is a catalyst for empowering citizens and mainstreaming democratic participation processes in local transformation projects

- Expand **democratic design and citizens' co-ownership** of urban and rural regeneration processes **through digital platforms, virtual reality and immersive digital environments**
- Launch a 2026 edition of the **NEB Boost for Small Municipalities**
- Support local democracy through innovative approaches to community engagement and inclusive public spaces (as part of EDS)
- Support **public authorities** in designing and implementing participatory processes (EU Competence Centre on Participatory and Deliberative Democracy)



# PARTICIPATION & LOCAL DEMOCRACY IN REC.



## ENHANCE PARTICIPATION, LOCAL DEMOCRACY AND DIGITAL CO-DESIGN TOOLS IN SUSTAINABLE URBAN AND NEIGHBOURHOOD DEVELOPMENT

- Mainstream **NEB project results** in the design/transformation of public spaces, empowering local actors through inclusive, community-driven solutions.
- Boost **local democracy and participation** through NEB projects/practices that improve inclusion and genuine participation in urban planning and development.
- Support **design for inclusion and safety by** systematically involving **persons with disabilities, older people and women** to create inclusive and safe environments.
- Strengthen **operational capacities** of local authorities to provide guidance on NEB



## Specific objective 3

Harness the transformative power of education, arts and culture

Culture and arts are a core feature of individual and communities' well-being and have the power to unleash creativity and innovation. NEB will foster the **interaction** of cultural professionals, artists and academics with engineers and entrepreneurs to provide new perspectives and co-create out-of-the box solutions.

- Promote **high-quality architecture** (Davos Process, Culture Compass)
- Integrate NEB values in future **European Capitals of Culture**
- Support NEB **artists' residencies** through the "Culture Moves Europe" Initiative
- Engage young people through the NEB Route of **DiscoverEU**
- Promote NEB values in **schools** (Education4Climate Coalition)



# EDUCATION, ARTS & CULTURE IN REC.



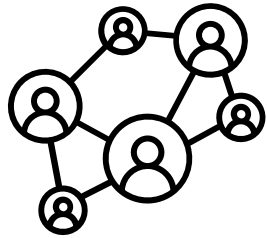
## HARNESS THE TRANSFORMATIVE POWER OF EDUCATION, ARTS AND CULTURE FOR THE CLEAN TRANSITION

- Support **cultural participation**, culture-led experiments and the contribution of artists and creative professionals
- Support the **European Capitals of Culture** to synergise with NEB values and principles, implement the **Davos Declaration** commitments, and integrate NEB values into national policies on architecture and the built environment in line with the 2021 Council conclusions
- Foster and recover **traditional craftsmanship knowledge and skills**
- Support **educational programmes and curricula** that embed NEB values and principles in schools and higher education institutions



# 4 enablers

PUBLIC



**NEB COMMUNITY  
AND GRASSROOTS  
PARTICIPATION**



**THE NEB ACADEMY:  
KNOWLEDGE,  
SKILLS AND  
BUSINESS  
DEVELOPMENT**



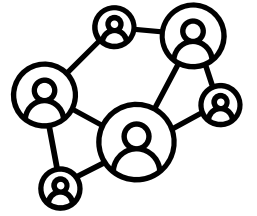
**FUNDING AND  
GOVERNANCE**



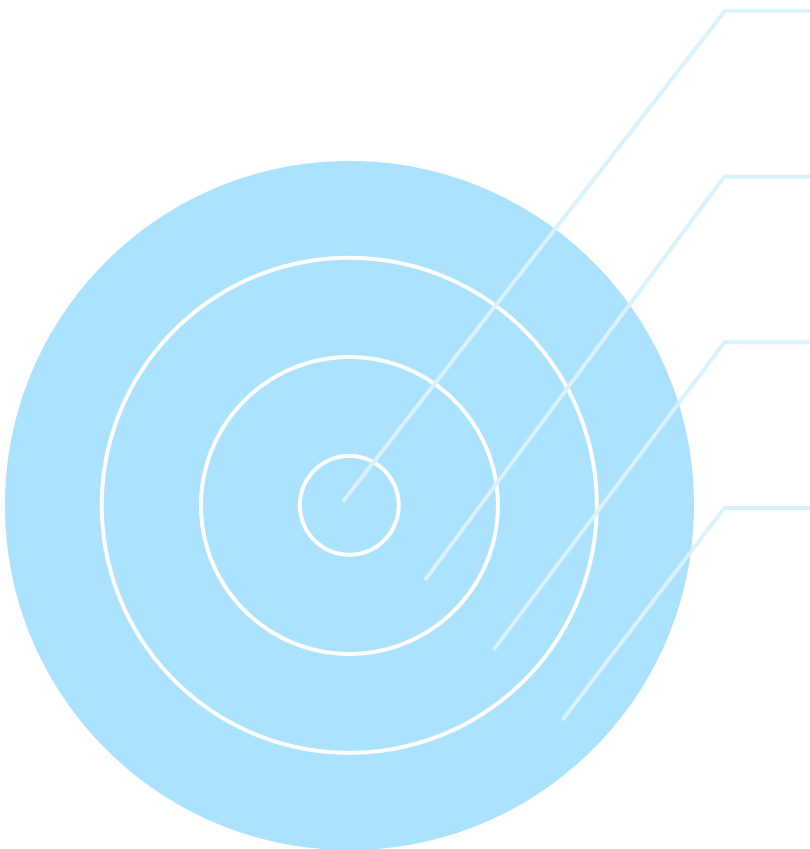
**INTERNATIONAL  
DIMENSION**



# NEB Community and grassroots participation



## The Commission will:



Set up an EU network of **local NEB Ambassadors**

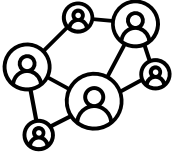
Set up a **NEB Lab on affordable housing**

Boost **stakeholder engagement** and **exchange of good practices** through the biennial NEB Festival

Further **promote NEB prizes** to reward good practices and raise awareness on innovative solutions and develop **special prizes for water resilience** (2026) and for **innovative student accommodation** (2027).



# NEB COMMUNITY IN RECOMMENDATION



## RAISE AWARENESS AND ENGAGEMENT ON THE NEB AND ITS COMMUNITY

- Support projects receiving the **NEB Label** by providing advisory services, visibility and easier access to funding, and by recognising the Label as a quality criterion in funding programmes
- Support the EC to expand and diversify the **NEB Community** by engaging with national members, creating synergies with national/regional activities, and raising awareness of NEB opportunities across academia, professionals, industry, civil society and public authorities
- Develop, where possible, **national NEB prizes or NEB categories within existing national prizes** in synergy with the EU NEB Prizes
- Increase awareness and participation in the biennial **NEB Festival** and ensure that national, regional or local **satellite events** take place in all Member States





# NEB Academy

Capacity Building & Skills Development

Knowledge & Research

Innovation & Business Development

[LAB] EXPERIMENT  
*Test ideas in controlled environment [sandboxes] receive support for piloting, access funding mechanisms, technical assistance or entrepreneurial support*



PUBLIC



[SCHOOL] LEARN  
*Find relevant training, online or in-person, anchored in local contexts through Hubs, but connected at EU level*

NEB project developer  
(start-ups, businesses, local authorities, practitioners...)



[FORUM] ENVISION, CONNECT, REFLECT  
*(1) Access data, discover inspiring NEB projects, connect with others, build synergies  
(2) make sense of your trials, inform, collect and share data*



# KNOWLEDGE, INNOVATION & SKILLS IN REC.



## IMPROVE KNOWLEDGE, INNOVATION CAPACITIES AND SKILLS THROUGH THE NEB ACADEMY TOOLS AND INITIATIVES

- Facilitate uptake of **NEB Academy knowledge, innovation tools, and training programmes** for a sustainable construction ecosystem and clean solutions
- Support the EC in **mapping NEB projects** across EU, national, and regional funding, sharing good practices, and developing KPIs to measure transformational impact
- Integrate NEB values and principles into national and regional **skills strategies** addressing skills gaps and into Pact for Skills partnerships, notably the Construction Large-Scale Partnership
- Support and promote NEB-relevant **VET, reskilling, and upskilling programmes**, notably those developed through the EIT and Erasmus+

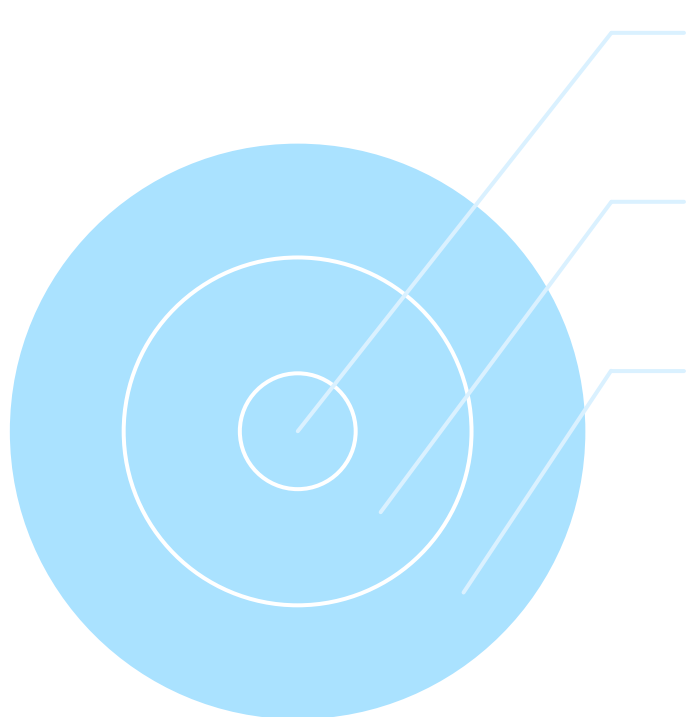




# Funding and governance

An optimal use of the EU funding requires a **strong role of Member States** and a central **coordinating role of the NEB National Contact Points (NCPs)** in the governance of the NEB at the national level.

## The Commission will:



support **NEB NCPs** through **capacity building and funding opportunities**.

continue encouraging Member States and regions to mainstream the NEB in the implementation of cohesion policy, promoting the development of **one NEB Lighthouse in each Member State**.

improve access to funding for smaller players through the **NEB Advisory Hub** and a **NEB Investment Accelerator**.



# FUNDING IN RECOMMENDATION

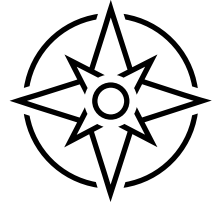


## IMPROVE ACCESS TO FUNDING AND INVESTMENTS

- Exploit the funding opportunities offered by the **NEB Facility**, for both its R&I and Roll-out components, by increasing awareness among all relevant stakeholders and supporting them to participate. Ensure funding in the long term
- Fulfil the commitments to implement **NEB in cohesion policy programmes**, by launching concrete calls for the implementation of NEB in relevant policy areas, including by maximising private investment via the NEB Territorial Development Model financial instrument.
- Exploit cohesion policy programmes to also develop **one NEB Lighthouse** in each Member State



# MULTILEVEL GOVERNANCE IN REC.



## ENSURE AN EFFECTIVE NEB MULTILEVEL GOVERNANCE AND A CENTRAL ROLE OF THE NEB NATIONAL CONTACT POINTS

- Recognise the central coordinating role of **NEB NCPs**, strengthen their capacity in synergy with the upcoming EU Housing Alliance, clarify core tasks with EC and convene a NCP meeting during each Council Presidency alongside relevant gatherings
- Ensure **cross-sectoral, multilevel NEB governance** nationally; facilitate collaboration between NEB NCPs and key networks (notably Horizon Europe NEB R&I NCPs and cohesion policy managing authorities)
- Promote the **NEB approach and tools in international exchanges** with third countries, and support **Ukraine's** sustainable and inclusive reconstruction through pilots/ demonstrators, skills development and the consolidation of its NEB Academy Hub



# International Dimension



- NEB promotes exchanges on **people-centred, sustainable solutions** worldwide to address shared challenges: **climate, housing, social cohesion...**

## The NEB will:



# New European Bauhaus and ESF+

- **Synergies** between the objectives of the NEB, the European Pillar for Social Rights and ESF+
- **Social innovation and citizens' participation** are key elements of the NEB
- Member States could use ESF+ funds to **support the NEB** in areas such as:
  - **Up- and reskilling** for the green and circular transition in the built environment
  - Fostering the creation of **local quality jobs**
  - Improving the **employment** of vulnerable groups
  - Strengthening **local democracy and participation**
  - Supporting **social and community-led innovations** and social economy actors
  - Ensuring **access to essential services** including social and affordable housing



PUBLIC

***Thank you!***

[New European Bauhaus: From vision to implementation - New European Bauhaus](#)

[New European Bauhaus: beautiful, sustainable, together. - New European Bauhaus](#)