



Council of the
European Union

**Brussels, 17 April 2024
(OR. en)**

9096/24

**ENV 432
CLIMA 171
ENER 187
CADREFIN 79**

COVER NOTE

From: Secretary-General of the European Commission, signed by Ms Martine DEPREZ, Director

date of receipt: 17 April 2024

To: Ms Thérèse BLANCHET, Secretary-General of the Council of the European Union

No. Cion doc.: SWD(2024) 96 final

Subject: COMMISSION STAFF WORKING DOCUMENT Monitoring and evaluation framework for the Programme for the Environment and Climate Action (LIFE) under the Multiannual Framework 2021-27

Delegations will find attached document SWD(2024) 96 final.

Encl.: SWD(2024) 96 final



Brussels, 16.4.2024
SWD(2024) 96 final

COMMISSION STAFF WORKING DOCUMENT

**Monitoring and evaluation framework for the Programme for the Environment and
Climate Action (LIFE) under the Multiannual Framework 2021-27**

Table of Contents

1. Purpose and uses of the monitoring & evaluation framework	2
1.1 Key aspects of the LIFE monitoring & evaluation framework	4
2. LIFE intervention logic.....	5
2.1 Problems & needs	6
2.2 Objectives.....	8
2.3 Inputs.....	10
2.4 Activities	11
2.5 Coherence with other EU policies and instruments	14
3. LIFE indicators framework	17
3.1 LIFE programme performance indicators	19
3.2 LIFE programme monitoring of key aspects of implementation	21
3.3 LIFE programme monitoring of catalytic effect	22
3.4 Cross-cutting policy indicators	24
3.5 Mainstreaming	27
3.6 Project-level data & information management.....	29
4. LIFE monitoring process	31
5. LIFE evaluation process.....	32
Annex I: LIFE programme Intervention Logic	33
Annex II: LIFE key monitoring indicators - analytical framework.....	34
Annex III: Method for measuring catalytic effect.....	36
Annex IV: Climate mainstreaming – methodology	40
Annex V : Key monitoring indicators: metadata	42

1. PURPOSE AND USES OF THE MONITORING & EVALUATION FRAMEWORK

In line with Article 19 of the LIFE Regulation¹, the Commission has developed a monitoring and evaluation (M&E) framework whose purpose is to ensure regular reporting and assessment of the LIFE programme's progress towards the achievement of its objectives, as set out in Article 3.

The purpose of this document is to illustrate the rationale of the framework, listing and defining the complete set of indicators available for monitoring and evaluation purposes, and laying down the data management strategy that has been implemented under the multiannual financial framework (MFF).

The M&E framework is also establishing a set of indicators that will be used for evaluating the programme, based on the intervention logic, clear definitions and efficient data management practices.

The aim of this work is to enable a better understanding of the monitoring activities associated with the LIFE programme and to inform the discussions on the design of evaluations for the LIFE programme in the period 2021-2027.

Performance information on the LIFE programme is essential to ensure transparency and accountability on EU spending and is a powerful tool to communicate to stakeholders and the public generally on EU added value and on progress and achievements toward policy goals.

For the Commission, it is important to be able to demonstrate how the EU money spent under the LIFE programme addresses the climate and environmental challenges, delivers the expected results on the ground, and brings tangible benefits. This is important not only for accountability and transparency, but also for building trust with stakeholders and the general public.

Performance is also an essential aspect for the good management of EU money. Putting performance at the core of the LIFE programme monitoring makes it possible to collect timely information on what is working and what is not working. This information will help to strengthen internal budgetary processes and to improve implementation of the current programme, and the design of future programmes.

The annual [Programme Performance Statements](#) and the [Annual Management and Performance Report](#) included a description of the LIFE programme's performance. These reports provide information on the progress of implementation, supported by evidence and with a set of indicators as set out in Annex II to the LIFE Regulation. In addition, in these reports the Commission monitors the contributions of programmes to general EU policies, in particular reporting on the contribution to climate, the clean energy transition, biodiversity

¹ [EUR-Lex - 32021R0783 - EN - EUR-Lex \(europa.eu\)](#)

mainstreaming, and clean air financing. For each of those objectives, the part of expenditure from the LIFE programme is estimated.

This M&E framework will be the reference for both the midterm and the *ex post* evaluations of the LIFE programme.

The Commission will perform the midterm evaluation of the LIFE programme once there is sufficient information available about its implementation, but no later than 42 months after the LIFE programme's implementation begins.

No later than 4 years after the end of the MFF programming period, the Commission is to evaluate the performance of the LIFE programme, including aspects such as its effectiveness, efficiency, and relevance, as well as coherence, synergies, EU added value and long-term sustainability, also taking account of the EU's climate and environment priorities.

The LIFE M&E framework aims to ensure that relevant data and information for monitoring and evaluation are collected efficiently, effectively, and in a timely manner, including project-level output and impact indicators covering environment, climate and energy policy objectives.

The LIFE M&E framework serves multiple purposes, including:

- measuring the programme's progress and achievements;
- informing management and decision-making processes;
- supporting transparency and accountability of expenditure with stakeholders; and
- guiding organisational learning and programme improvements.

Additionally, the M&E framework aims to facilitate the assessment of the LIFE programme contribution towards:

- *meeting EU environmental, nature and biodiversity, and climate and energy targets*, measured in quantitative terms using standard EU indicators, with the metric, baseline and milestone set at project level for use as illustrative examples to assess progress at programme level in qualitative terms;
- *improved environmental, climate and energy governance*², measured in quantitative terms (as a direct output) by the extent of LIFE projects supporting the development, implementation, monitoring and enforcement of environmental, climate and energy policies, and in qualitative terms against a wider policy landscape at programme level; and
- *socio-economic transition*, measured at programme level in qualitative terms (as an indirect outcome) by the extent of the LIFE programme's catalytic effect under various dimensions, including: temporal (project runs for an extended time period), sectoral (approaches or

² The Governance Regulation addresses energy and climate governance in an integrated way: https://commission.europa.eu/energy-climate-change-environment/implementation-eu-countries/energy-and-climate-governance-and-reporting_en

techniques are adopted across sectors), spatial (approaches or techniques are adopted across territories), quantitative (a novel or emerging technique succeeds in becoming commonplace), or financial (additional finance is secured to support large-scale deployment).

1.1 Key aspects of the LIFE monitoring & evaluation framework

The LIFE M&E framework builds directly on the pre-existing framework for the monitoring and evaluation of the LIFE 2014-2020 programme and the evaluation of the preceding programmes. It has been upgraded with some modifications and will better adapt to the nature and rationale of the LIFE 2021-2027 programme and subprogrammes, in particular the new LIFE Clean Energy Transition subprogramme. This general consistency supports continuity in reporting between programming periods and creates a continuous process for identifying gaps and lessons learnt, ultimately to improve the performance system.

Key changes have been introduced that can be summarised as follows:

- programme-level reporting of process and output indicators, extending the scope of process indicators to include reporting for all delivery mechanisms and linked to financial reporting;
- reducing the number of result indicators, focusing on key project indicators;
- reducing the reporting burden for the beneficiary, requiring reporting on results and impact using ‘common’ indicators; and
- reinforcing the checks for better quality and robustness of the indicators.

The LIFE M&E framework comprises a range of tools and procedures necessary to measure and monitor progress towards objectives and to ensure full clarity and transparency on the way the LIFE programme addresses the identified challenges through actions. The LIFE M&E framework strives toward:

- a solid intervention logic;
- a comprehensive set of monitoring arrangements and well-structured performance indicator framework, at the level of both programme (with indicators listed in the Annex to the LIFE Regulation) and project (with indicators collected during project implementation);
- efficient data and information tools; and
- a well-defined evaluation process.

2. LIFE INTERVENTION LOGIC

The LIFE programme is the only EU programme fully dedicated to environmental, climate and energy goals; LIFE contributes to the transformation of the EU into a climate-neutral and resilient society, by supporting the implementation of the EU's climate policy as part of the Green Deal for Europe and preparing the EU for the climate challenges in the coming years and decades.

Launched in 1992, the LIFE programme is the only EU fund entirely dedicated to environmental, climate and energy objectives, addressed at present through four subprogrammes: nature, environment, climate and clean energy transition. LIFE is the EU's funding instrument for environment, climate and sustainable energy action.

On 21 May 2022, it turned 30 and for three decades LIFE has supported hundreds of projects by public and private bodies and civil society organisations.

Since 2021, LIFE has been enlarged with the LIFE Clean Energy Transition subprogramme (LIFE CET), the key programme for EU clean energy policy implementation, which builds on predecessor programmes such as Intelligent Energy Europe and the Horizon 2020 Energy Efficiency market uptake.

The EU has embarked on a challenging journey towards a modern, competitive, resource-efficient, climate-neutral and climate-resilient economy. The aim is to move towards a just, green transition that leaves no one behind, while improving people's health and quality of life, and protecting nature.

Figure 1: LIFE sub-programmes



The European Green Deal is the EU's flagship initiative on sustainability. With a budget of EUR 5.4 billion under the 2021-2027 programming period, the LIFE programme is fully supporting the European Green Deal by responding to the need of transforming society into a clean, circular, energy-efficient, climate-neutral and climate-resilient economy, with a high level of environmental protection and aiming to halt and reverse biodiversity loss.

In pursuing the achievement of the objectives of the European Green Deal, LIFE aims to contribute to the targets of the environmental, climate and relevant energy legislation, strategies, plans and international commitments of the Union, such as the United Nations 2030 Agenda for Sustainable Development, the Convention on Biological Diversity and the Paris Agreement. The LIFE programme also aims to address systemic problems and failures, such as market failure, difficulties in internalising externalities, insufficient availability and use of efficient environmental, climate-friendly and low-carbon methods across different sectors, or the lack of knowledge, expertise and information.

A high level of environmental protection is of fundamental importance for the health and well-being of people in the EU. The LIFE programme will support efforts to increase the levels of compliance with EU environmental, climate and energy policy and legislation, and to strengthen environmental and climate governance at all levels.

2.1 Problems & needs

There are several drivers of the existing and ongoing environmental and climate problems. These drivers (or failures) may act at the level of individuals and communities and/or at the overarching level of market policy or governing institutions.

These failures highlight the need for public action through, for example, policy/regulation or programmes such as LIFE, to support a transformation of society. Environmental problems are driven by several market and institutional failures, as set out below.

Public goods market failure: A diverse and healthy nature and good environmental status are

PROBLEMS & NEEDS

Environmental projections with respect to: biodiversity, chemical & health, water quality & management, waste management, ambient air quality, resource management, clean energy, climate change mitigation & adaptation

- Public goods market failure
- Imperfect information
- Negative externalities
- Government, institutional, regulatory or policy failure
- Eco-innovation failure
- Societal failure

considered as public goods since their preservation benefits all; in the absence of action, the costs of preserving them would be borne unequally only by some. Without public action, such as policy, legislation or financial incentives, there would be no incentive to preserve and protect the environment. Moreover, uncontrolled access to and exploitation of public environmental resources would take place in favour of economic gains, regardless of the principles of a circular economy that reconciles both objectives. Finally, without any action, the market itself would lead to a suboptimal outcome, i.e. an overexploitation of natural resources and an overall degradation in environmental quality.

▪ *Imperfect information:* Insufficiency or asymmetric distribution of comprehensive information on environmental degradation and climate change impacts leads to behavioural bias through incorrect signals. With respect to nature, biodiversity and climate change in particular, the unknown timing of many impacts means that the full consequences of individual or market-driven actions are not perceptible today. Another instance of imperfect information relates to the challenge of implementing public action where net emissions of polluters are difficult to monitor efficiently (making it impossible to effectively implement emission charges and/or limits). Incomplete or asymmetric information on environmental degradation and climate change impacts leads to a suboptimal outcome when there is no public action.

▪ *Negative externalities:* There are unintended negative impacts of production and consumption practices that are not fully priced into the market. This lack of pricing results in the inability of the market to value the full social and economic benefits of a healthy environment. Pollution is again a good example here, where the health and biodiversity costs

of air and plastic waste pollution are not taken into consideration in the production/consumption process despite circular economy models that provide solutions to reduce them.

▪ *Government, institutional, regulatory or policy failure*: Although subtle differences exist across these terms; overall, this failure refers to the imperfect nature of action by governance authorities. In the case of variable/weak regulatory regimes, with poor enforcement or non-uniform implementation of rules at Member State level, market players may be more likely to pollute the environment or damage nature and environmental resources. This type of failure can be avoided at EU level by ensuring strong and coordinated policy action, with effective monitoring and enforcement. It can also be addressed by increasing support for virtuous behaviour that will reduce the use of environmental resources while providing economic growth.

▪ *Eco-innovation failure*: By failing to assign an economic value to environmental costs and benefits, the market system also fails to fully incentivise or reward innovative ideas for reducing environmental and climate change impacts. Tailored regulation and policy-driven incentives can drive eco-innovation forward, for example through grant systems to support specific types of research. However, there is a fine line between stimulating and stifling the eco-innovation sector through regulation and policy; a careful balance is needed.

▪ *Societal failure*: There is a lack of societal acceptance of the need to change behaviour, reduce consumption and/or improve sustainability. This is particularly visible in cases where financial or welfare gains are dominant in producer and consumer choices. Growth in the aviation sector, with the associated increase in emissions, presents an example of the divergence between societal and environmental needs, illustrating a dilemma for policymakers.

▪ *Infrastructure lock-in and investment failure*: More has to be done to ensure that EU policies consistently incorporate environmental, clean energy and climate objectives and/or consistently contribute to the implementation of EU policy and legislation in these areas. Lack of sufficient and targeted funding, and insufficient mainstreaming of environmental, clean energy and climate objectives into other programmes and policies have been identified as two of the main reasons for a lack of sufficient progress on EU policy implementation in these areas. Given the market and institutional failures mentioned above, the necessary funding is not forthcoming within the market system; this requires public action.

With regard to mainstreaming of climate objectives into EU policy and spending, a recent review³ highlighted difficulties in ensuring effective climate mainstreaming in some programme areas, as well as the lack of a widespread understanding among policymakers of potential for mainstreaming climate in programmes or projects.

³ See DG CLIMA (2022), *Climate mainstreaming in the EU budget - Preparing for the next MFF: final report*. <https://publications.europa.eu/en/publication-detail/-/publication/1df19257-aef9-11e7-837e-01aa75ed71a1>.

Effective mainstreaming is essential but is not sufficient to solve the environmental problems. Targeted environmental, clean energy and climate funding is needed to address the additional financing needs but also to provide both a catalytic effect to support relevant policy implementation and an altogether more sustainable behaviour affecting production and consumption.

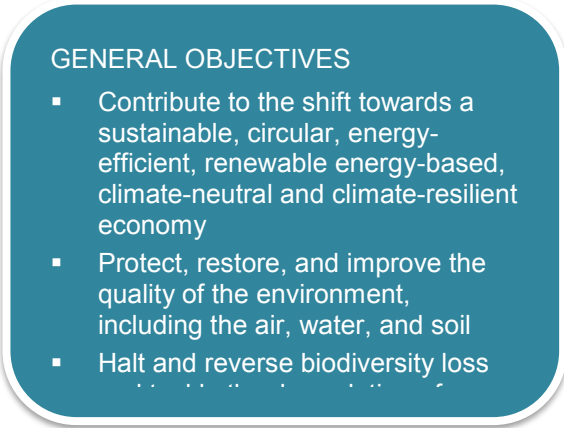
As a result, environmental and climate mainstreaming, and targeted funding, would be needed to address appropriately the EU’s environmental problems and failures.

The LIFE programme is not intended to provide a solution to all environmental, climate and energy problems, but rather to act as a catalyst for developing and exchanging best practices and knowledge.

The programme’s role is to build up and improve capacity, speed up the implementation of EU legislation, and help private players, in particular businesses, to test small-scale technologies and solutions, and leverage other funds.

2.2 Objectives

The general objective of the LIFE programme is to contribute to the shift towards an economy



GENERAL OBJECTIVES

- Contribute to the shift towards a sustainable, circular, energy-efficient, renewable energy-based, climate-neutral and climate-resilient economy
- Protect, restore, and improve the quality of the environment, including the air, water, and soil
- Halt and reverse biodiversity loss

that is sustainable, circular, energy-efficient, renewable energy-based, climate-neutral and climate-resilient. This is to protect, restore and improve the quality of the environment, including the air, water and soil, to halt and reverse biodiversity loss, and to tackle the degradation of ecosystems, thereby contributing to sustainable development.

Biodiversity, climate and energy actions, given their intertwined nature, require intertwined approaches to avoid trade-offs and to promote multi-benefit actions between biodiversity, ecosystems degradation and climate change, including CO₂ impacts, as set out in the description of the four subprogrammes.

With respect to the magnitude of the needs, the budget of the LIFE programme (currently amounting to EUR 5.4 billion for the period 2021-2027 – 0.3% of the total EU budget), might not appear commensurate and sufficient to tackle these challenges.

LIFE’s key role is to promote the search for specific approaches that, in the end, might help to tackle wider, broader objectives.

The LIFE programme has been designed to be sufficiently flexible to target the evolving needs throughout the programming period and to have a sufficient critical mass of finance to catalyse real societal transformation.

In pursuing its general objectives, LIFE targets specific objectives focused on innovative techniques, methods and approaches, on enforcement of EU legislation and policy, and on deployment of successful technical and policy-related solutions.

The LIFE programme targets a niche between EU programmes supporting research and innovation on the one hand and EU programmes financing large-scale deployment of measures on the other. It focuses in particular on

SPECIFIC OBJECTIVES

- Develop, demonstrate, and promote innovative techniques, methods, and approaches for reaching the objectives of EU legislation and policy on the environment and on climate action and to contribute to the knowledge base and to the application of best practices
- Support the development, implementation, monitoring and enforcement of relevant EU legislation and policy on the environment and on climate action and on the transition to renewable energy or increased energy efficiency
- Act as a catalyst for the large-scale deployment of successful technical and policy-related solutions for implementing relevant EU legislation and policy on the environment and on climate action

enhancing coordination and support actions addressing market barriers, advancing innovative approaches and investment mobilisation, and promoting skills and capacities (see Figure 2 below, illustrating the financing stages of green solutions).

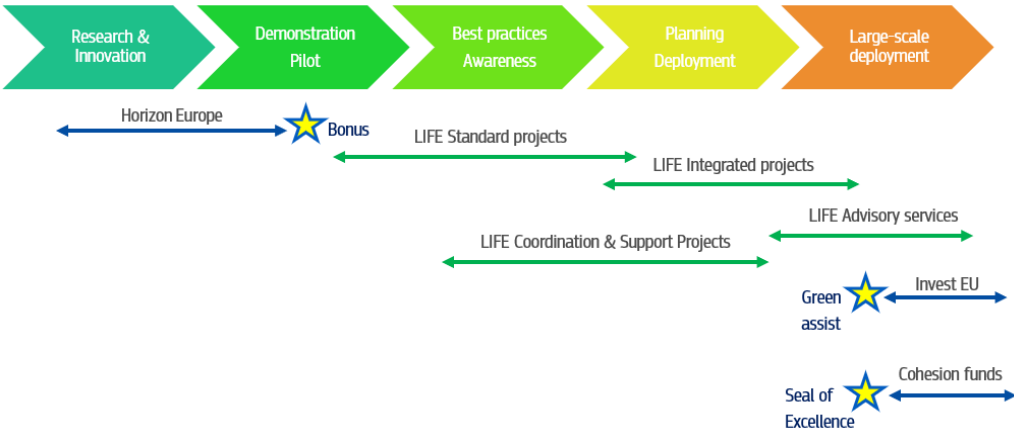
With the exception of small-scale research activities that support other objectives in projects, the LIFE programme does not cover research/innovation and mainly finances actions covering:

- *demonstration/pilot projects*, including testing, demonstrating and piloting the effectiveness of new technologies, approaches or policies as methods for policy implementation; and

- *best practices/awareness*, facilitating exploitation/upscaling/awareness to prepare the ground for the large-scale deployment of appropriate technical and policy-related solutions.

LIFE also contributes to planning the deployment for large-scale finance of green and clean energy solutions, where lack of capacity to access funding constitutes the main barrier for the large-scale deployment of a technology, approach or policy. This contribution has already proved to be effective, in particular via technical assistance facilities: the InvestEU programme implemented by the European Investment Bank; the Green Assist, and the Project Development Assistance implemented by the Climate, Infrastructures and Environment Executive Agency.

Figure 2. LIFE: a holistic approach from knowledge to action



An effective mechanism for promoting synergy under the LIFE programme is the attribution of bonus points in the evaluation of projects; bonus points (two under the 2021-2024 multiannual work programme) are granted to projects that substantially build on or upscale the results of other EU-funded projects.

Another mechanism newly introduced in the LIFE programme is the seal of excellence. This covers projects that could not be funded under LIFE, but which have been recognised as being of high quality and of potential interest for funding under the European Regional Development Fund, the European Social Fund+ and the European Agricultural Fund for Rural Development.

Finally, the Green Assist mechanism is also a way to facilitate synergies, by enhancing the capacity of beneficiaries to identify the instruments. The mechanism provides technical and financial expertise to green investment projects, creating a pipeline for green investment projects complementary to and independent of specific funds.

2.3 Inputs

The financial programming for the LIFE programme under the multiannual financial framework is lower at the beginning and higher at the end. The core funding of the European Environment Agency and the European Chemicals Agency, to cover new activities in the field of environment and climate action, is provided by the LIFE programme.

Table 1: Overall commitment for the LIFE programme for the multiannual financial framework 2021-2027

Million EUR - Current prices	2021	2022	2023	2024	2025	2026	2027	Total
Programme for Environment and Climate Action (LIFE)	700	715	736	763	796	838	884	5 432

The budget will be allocated through multiannual work programmes, the first covering the first 4 years, the second the remaining 3 years.

The programme will provide financial support to projects and actions in four main areas, considered as subprogrammes, as set out below.

Nature and biodiversity

- financing projects to restore natural habitats, to help the conservation of wild species and to support the Natura 2000 network;
- contributing to achieving the targets of the 2030 biodiversity strategy and the EU’s adaptation strategy through a holistic/systemic approach.

Circular economy and quality of life

- financing projects that reduce waste and increase efficiency in the use of resources;
- supporting actions for the protection of health;
- supporting initiatives to improve the quality of air and soils, and the ecological status of waters, and to reduce dangerous chemicals and noise;
- contributing to the circular economy action plan;

- contributing to implementation of the zero pollution action plan and of three key strategies: the chemicals strategy for sustainability, the new EU forest strategy for 2020 and the EU soil strategy for 2030.

Climate change mitigation and adaptation

- supporting actions for the irreversible and gradual reduction of anthropogenic greenhouse gas emissions by sources and for the increase in removals by sinks;
- contributing to the EU's goal for the EU's economy and society to become climate-neutral by 2050 and to the intermediate target of reducing net greenhouse gas emissions by at least 55% by 2030, compared with 1990 levels, as set out in the European Climate Law;
- supporting actions aimed at strengthening resilience and reducing vulnerability to climate change;
- contributing to implementation of the EU's adaptation strategy and biodiversity strategy for 2030 through a holistic/systemic approach.
- clean energy transition
- supporting projects to break market barriers and change market and regulatory fundamentals that hamper the socio-economic transition to energy efficiency and the use of renewable energy sources;
- supporting acceleration of the transition towards an economy based on sustainable energies, by improving governance, capacity and skills at all levels, and mobilising investment and improving access to finance;
- supporting directly the uptake and implementation of EU legislation, targets and initiatives, to deliver a real impact on the ground in areas such as the renovation wave.

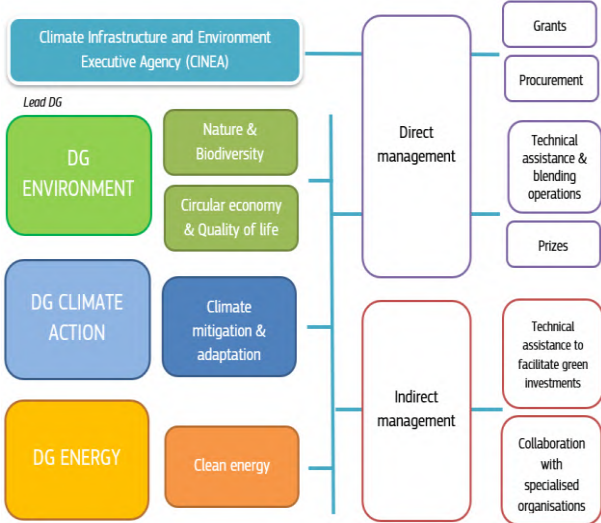
2.4 Activities

The budget of the LIFE programme is mainly implemented through direct management by:

- grants
 - strategic nature projects (sub-programme 1)
 - strategic integrated projects (sub-programmes 2 and 3)
 - standard action projects (sub-programmes 1, 2 and 3)
 - coordination and support action projects (sub-programme 4)
 - technical assistance projects (all sub-programmes)
 - other action grants (all sub-programmes)
 - operating grants to NGOs (all sub-programmes)
- procurement (all sub-programmes)
- prizes (sub-programme 3)
- other (e.g. technical assistance and blending operations).

Indirect management can be used for specific activities, e.g. to finance technical assistance services to support investment operations, activities of international organisations, or other assimilated bodies.

Figure 3: Overview of LIFE structure



For the programme implementation under direct management, the Directorate-General for Environment (DG ENV) is the lead Directorate-General with support from the Directorate-General for Climate Action (DG CLIMA) and the Directorate-General for Energy (DG ENER). The new European Climate, Infrastructure and Environment Executive Agency (CINEA) is entrusted, on behalf of the parent DGs, with the management of the bulk of grants and some procurement activities on strategic EU initiatives.

OUTPUTS

- Projects developing, demonstrating, and promoting innovative techniques, methods & approaches
- Projects applying best practices in relation to nature & biodiversity
- Projects for development, implementation, monitoring and enforcement of relevant EU legislation and policy
- Projects improving governance by enhancing the capacities of public & private actors & the involvement of civil society
- Projects, including strategic integrated and strategic nature projects, implementing key plans or strategies

Given the broad spectrum of activities, it is expected that implementation of the LIFE programme will contribute to the achievement of a wide range of direct and indirect results in line with the LIFE programme’s specific objectives. **Outputs, results and impacts**

One of the key elements for the success of the LIFE subprogrammes (nature, environment, climate and clean energy transition) is its bottom-up approach: 85% of the LIFE budget is dedicated to support projects on the ground. For LIFE CET, the programme is based on the policy-driven, highly prescriptive and demanding topics directly supporting implementation of the EU

energy policy agenda.

The projects are conceived and implemented on the ground by the people who want to engage in a transformative and innovative path towards sustainability.

The role of LIFE is to support them, facilitate the dissemination and replication of the successful experiences, and mainstream the EU environmental, climate and energy policies.

LIFE also finances a wide range of activities, ranging from support to the circular economy and climate adaptation to the uptake of energy efficiency and onsite renewable energy sources; from the demonstration of new emission reduction and energy-efficient technologies

and processes to the preparatory work for international negotiations; and from the protection of public health in the face of environment degradation to the enforcement of environment, climate and energy legislation.

RESULTS

- Halt & reverse biodiversity loss (habitats and species) and degradation of ecosystems, including marine
- Reduction in ecosystem and population exposure to high levels of air pollutants
- Achievement of good status of water bodies
- Protection, restoration & improvement of soil quality
- Reduction in the use of chemicals with adverse effects on the environment & health
- Reduction in noise pollution
- Reduction in waste, including marine litter
- Increased resource efficiency
- Increased renewable energy

While LIFE activities tackle certain problems directly on the ground, the programme's main impact is indirect through its catalytic role: the support for small-scale actions intended to initiate, expand or accelerate sustainable production, distribution and consumption practices by supporting:

- the development and exchange of best practices and knowledge;
- the building up of capacities and the speeding up of implementation of environmental, climate and energy legislation and policies;
- the testing of small-scale technologies and solutions and approaches; and
- the mobilisation of funding from other sources.

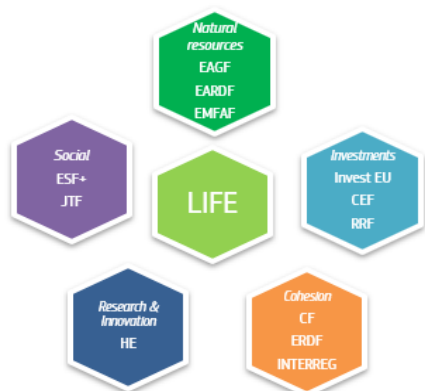
Ultimately, the LIFE programme aims to:

facilitate the shift towards a sustainable, circular, energy-efficient, renewable energy-based, climate-neutral and climate-resilient economy; protect, restore, and improve the quality of the environment; and progress towards sustainable development.

The full picture of the components of the intervention logic and their interrelations are illustrated in Annex I.

2.5 Coherence with other EU policies and instruments

Figure 4: LIFE relevant synergies



LIFE is the only programme under MFF 2021-2027 completely dedicated to actions in the field of climate, energy and environment.

However, climate, energy and environmental policies involve a wide range of activities funded by many other spending programmes and initiatives.

Consequently, the LIFE programme's synergy and complementarities with other EU programmes is crucial to ensure coherence and cost-effectiveness. Main interactions are with the following programmes:

European Agriculture Guarantee Fund (EAGF) and the European Agricultural Fund for Rural Development (EAFRD)

The EAGF and the EAFRD jointly finance the national strategic plans of Member States under the common agricultural policy.

From 2023 onwards, eco-schemes will provide stronger incentives for climate-friendly and environmentally friendly agricultural practices. These are instruments designed to reward farmers that choose to go one step further in terms of environmental care and climate action. Moreover, rural development initiatives such as agri-environment-climate commitments, organic farming and Natura 2000 payments will make a major contribution to biodiversity and climate objectives.

In the same area, support to organic production should be changed into support to organic farming as the common agricultural policy finances environmentally friendly agricultural practices, among which organic farming.

Many initiatives, such as support for organic production, agri-environment-climate commitments (e.g. related to soil conservation or nutrient management), advisory services on climate change mitigation/adaptation and green investments (e.g. for restoring wetlands and peatlands), have a direct positive impact on the environment and support the European Green Deal's objectives.

Under Regulation (EU) 2021/2115, Article 99 provides the possibility for Member States to use a certain share of the EAFRD allocation to leverage support and upscale integrated strategic nature projects benefiting farmers' communities, as provided for under Regulation (EU) 2021/783 (LIFE). In addition, Article 79(4) of Regulation (EU) 2021/2115 on the selection of operations provides the possibility that operations having received a seal of excellence certification under LIFE can be given priority, meaning that there is no application of selection criteria, provided that those operations are consistent with the common agricultural policy strategic plan.

European Maritime, Fisheries and Aquaculture Fund (EMFAF)

The EMFAF contributes directly to the environmental objectives by, among other things, funding projects: that facilitate the protection and conservation of marine resources and biodiversity; that facilitate the transition to sustainable and low-carbon fishing activities and the overall sustainable use of marine resources; and that support the circular economy.

Cohesion Fund (CF) & European Regional Development Fund (ERDF)

Investments under CF & ERDF programmes may directly target the environment, climate and energy objectives, for example by funding projects on the protection and preservation of nature, biodiversity, building renovations, promoting renewable energies, energy-efficient networks, and green infrastructure, including in urban areas, and by reducing all forms of pollution. Likewise, CF and ERDF programmes can support circular economy initiatives that may help to reduce the amount of waste generated. They may also finance projects dealing with water supply and sanitation, including wastewater treatment and solid waste management. All these projects contribute to reducing pollution and fostering a more efficient use of resources.

European territorial cooperation programmes (Interreg)

European territorial cooperation programmes play a role in contributing to sustainable development, in particular relating to transnational or cross-border aspects.

European Social Fund Plus (ESF+)

The programme contributes to the green transition and green economy. Therefore, by supporting labour market reintegration projects or educational programmes linked to the circular economy, energy efficiency and other aspects of the green economy, the ESF+ can support the development of the new skills needed to adapt to climate change and help businesses to advance in that direction.

Just Transition Fund (JTF)

The environment is integrated through the JTF by financing projects that contribute to a transition to a sustainable, climate-neutral economy, including measures that aim to increase resource efficiency. Investments related to the production, processing, transport, distribution, storage or combustion of fossil fuels will not be supported.

Horizon Europe (HE)

Horizon Europe supports research and innovation to accelerate and steer the green transitions through human-centred technologies and innovations.

Horizon Europe is funding in particular five EU missions as a new way to bring concrete solutions by 2030 to some of our greatest challenges, by means of research and innovation combined with new forms of governance and collaboration, and also by engaging with the public at large.

Four of the missions are focused on environmental challenges:

- adaptation to climate change: support at least 150 European regions and communities to become climate-resilient by 2030;
- restore our ocean and waters by 2030;
- 100 climate-neutral and smart cities by 2030; and
- a soil deal for Europe: 100 living labs and lighthouses to lead the transition towards healthy soils by 2030.

Innovation Fund (IF)

The Innovation Fund is the EU fund for climate policy, with a focus on energy and industry. It aims to bring to the market solutions to decarbonise European industry and support its transition to climate neutrality while fostering its competitiveness. The Innovation Fund is a key funding instrument for delivering the EU's economy-wide commitments under the Paris Agreement and the climate and energy priorities put forward in the REPowerEU Plan, the Hydrogen Bank, the Green Deal Industrial Plan and the Net-Zero Industry Act.

Connecting Europe Facility (CEF)

For the transport sector, the CEF supports innovation in the transport system in order to, among other goals, reduce the environmental impact of transport and promote energy efficiency, which has a positive effect on local air pollution and mitigates the climate impact of transportation.

InvestEU Programme

InvestEU will make a direct contribution to the EU's environmental objectives through its dedicated eligibility areas linked to the environment and resources. In particular, under the sustainable infrastructure policy window, the fund can provide support for nature and environmental infrastructure, such as the circular economy, water and waste management. The financing and investment operations under the InvestEU Fund may also fall under the environment and resource areas, in particular with respect to the enhancement and restoration of ecosystems and their natural and biodiversity services by means of green and blue infrastructure projects, such as sustainable agriculture, forestry and fishery. Under the natural capital and circular economy initiative, the InvestEU Fund will contribute to the EU's environmental objectives through dedicated eligibility areas under different policy windows.

Recovery and Resilience Facility (RRF)

Reflecting the European Green Deal and the need to achieve climate neutrality by 2050, the RRF supports reforms and investment in green technologies and capacities, including in sustainable mobility, energy efficiency, renewable energy, climate change adaptation, the circular economy and biodiversity.

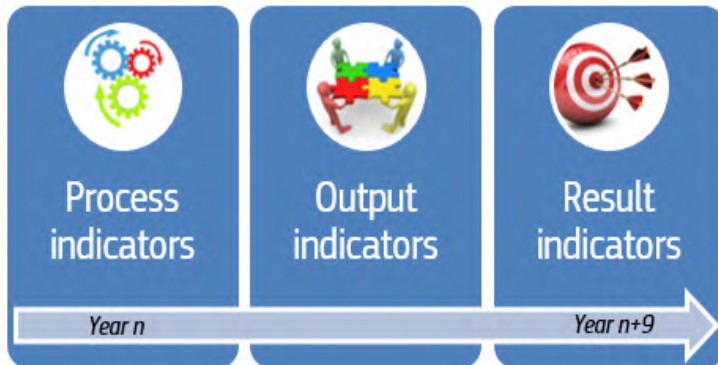
Beyond a general requirement to contribute to the green transition pillar, each Member State must dedicate at least 37% of its recovery and resilience plan's total allocation to measures contributing to climate objectives.

3. LIFE INDICATORS FRAMEWORK

Monitoring is an essential feature for the good functioning of the programme. It means keeping the processes, the implementation and the effects on the ground of LIFE spending under systematic observation. Monitoring is also a tool to collect data and information for the evaluation.

Figure 5 LIFE programme - indicator framework, type and timeline

Indicators are a key part of a monitoring system, complementing other sources of information.



The LIFE indicator framework has been designed to provide information throughout the programme's lifetime, with a set of indicators covering short-term outputs, medium-term results and longer-term impacts of the programme.

The monitoring framework for the LIFE programme is based on a well-structured framework of performance indicators (see Figure 5). It includes process, output and the result indicators to be able to observe whether implementation is on track, delivery is as planned and if the intended effects are being produced.

Impact indicators make it possible to observe how the programme contributes to addressing the needs and challenges identified and how money spent actually contributes to delivering the expected impacts on the ground. Impact indicators are also part of the LIFE monitoring and evaluation. These help to identify the contribution of the programme to the objectives, in particular with reference to the long-term wider effects on society, environment, etc., beyond those directly affected by actions funded under the programme. Impact indicators are challenging both for identification and for quantification; a variety of factors may be involved and the data lag can be wide since it can take several years before funded initiatives can actually have an impact, and even longer before that impact can be measured.

For these reasons, a limited number of impacts are assessed regularly for monitoring purposes, and then, at the time of the evaluation, there is a wider set of impact indicators including indicators to measure:

- causality - changes that are influenced by a wide range of factors, of which the programme is only one; and
- contextual information - developments that are not intentionally related to the programme, although they may influence it or be influenced by it.

Table 2: LIFE type of indicators

Process indicators	<i>They measure all the resources mobilised, in particular financial resources and delivery mechanisms. In the case of grants, they involve data related to the demand per priority area and type of project, in terms of number and types of applicants, country of origin, contribution requested and total project costs, time-to-grant, time-to-pay, error rate, etc.</i>
Coverage	All actions
Availability	Once a year. Generally starting from year 1. No baseline.
Provider	Commission and the applicants
Tool	A database on information on grant proposals is available (e-grants)
Output indicators	<i>They measure physical outputs (e.g. number of actions per priority area and delivery mechanism). In the case of grants, they include data per project type, number and type of beneficiaries, country of origin, amount of grants and external co-financing). Data will also be collected on the number of LIFE-financed projects that include the exploitation and deployment of research and innovation results, financed under Horizon Europe or previous R&I programmes</i>
Coverage	All actions
Availability	Once a year. Generally starting from year 3. No baseline. Milestones and targets indicatively identified.
Burden	Commission
Tool	A database on information on grant proposals is available (e-grants).
Result indicators	<i>They measure the direct results of the actions in terms of deliverables/achievements (hectares of ecosystem restored, CO₂ emissions reduced, etc.) and, when relevant, the sustainability of results could be measured, e.g. transfer of data and information to relevant stakeholders (environment authorities, industry, etc.)</i>
Coverage	All actions
Availability	At the beginning of the action in terms of anticipated results, as for Strategic Integrated Projects (SIPs) and Strategic Nature Projects (SNAPs) in year n+4, and at the end of each action (depending on the duration: generally, for SIP/SNAPs in year n+8). For LIFE CET projects, this is estimated at month 9 and at the end of the project, i.e. generally year n+3/4; an estimation is provided for the key performance indicator at end of the project and 5 years after the end of the project. Depending on its duration, the progressive achievement of the results is monitored. Baselines defined, where possible. Milestones and targets indicatively identified.
Burden	Commission, the beneficiary (in terms of grants) and the external monitors for projects using them
Tool	A database on information on indicators at project level is available.

Impact indicators	<i>They measure the expected impact of the results of the action during the project (e.g. population benefiting from cleaner air) and the longer-term sustainability of results (as managed by environment authorities, industry, etc.)</i>
<i>Coverage</i>	Selected actions. They can be inapplicable or irrelevant for some actions (i.e. study contracts)
<i>Availability</i>	At the beginning of the action in terms of anticipated impact (usually, for projects, starting in year n+4), at the end of each action (depending on the duration: generally, for projects in year n+8) and, on a sample basis, from 3 to 5 years after the end of the action. For LIFE CET projects, this is estimated at month 9 and at the end of the project, i.e. generally year n+3/4; an estimation is provided for the project performance indicators at the end of the project and 5 years after the end of the project. Baseline to be defined where possible. Milestones and targets indicatively identified.
<i>Burden</i>	Commission, the beneficiary (in terms of grants) and external monitors
<i>Tool</i>	A database on information on indicators at project level is available (database of key performance indicators)

Note: n= date of the signature of the grant

3.1 LIFE programme performance indicators

Under the preparation of the MFF 2021-2027, Commission services have made a major effort to identify a high-quality set of performance indicators for the new spending programmes. Also, for the LIFE programme, a set of indicators has been carefully selected to provide a representative indication of performance on an annual basis throughout the cycle.

The LIFE performance indicators are designed to be representative of programme objectives and are the reference for reporting, monitoring and evaluation of the LIFE programme. They are based on the list included in Annex II to the LIFE Regulation⁴.

The LIFE performance indicators are the bulk of the information on the progress and achievements of the LIFE programme.

The LIFE key monitoring indicators are helpful to ensure full transparency and accountability and to demonstrate the value that the LIFE spending brings, while taking account of all the factors that can affect the pace of programme implementation. They are reported annually so as to inform the discussion on the draft budget and support the discharge process. It is important to note that the LIFE objectives are strictly interlinked and therefore each action contributes to more than one objective. The indicators have been linked to objectives on the principle of primary intention.

⁴ With respect to the list indicated in Annex II to the LIFE regulation, some of the core performance indicators were specified after the definition of the subprogrammes, in particular for some indicators (i.e. net change) because they are based on the aggregation of project-level indicators, while some others have been complemented with additional indicators.

Table 3: LIFE programme: Key monitoring indicators – conceptual framework

Objective	Type	Indicator
Specific objective (a)1: <i>develop, demonstrate, and promote innovative techniques, methods, and approaches for reaching the objectives of EU legislation and policy on the environment, climate and energy</i>	<i>Output</i>	Projects that are developing, demonstrating, and promoting innovative techniques and approaches to contribute to the shift towards a sustainable, circular, energy-efficient, renewable energy-based, climate-neutral and climate-resilient economy
	<i>Output</i>	Projects, including integrated projects, implementing key plans and strategies
	<i>Result</i>	Net change (soil): area of land with improving soil quality
	<i>Result</i>	Net change (water): water bodies with improving ecological status
	<i>Result</i>	Net change (water): water management with increasing efficiency
	<i>Result</i>	Net change (waste): waste management that is improving
	<i>Result</i>	Net change (chemicals): reduction in the use of dangerous chemicals
	<i>Result</i>	Net change (climate): reduction of greenhouse gas emissions
	<i>Result</i>	Net change (energy): additional annual primary energy savings
	<i>Result</i>	Net change (energy): additional annual primary renewable energy production
	<i>Impact</i>	Population benefiting from an improvement in air quality
	<i>Impact</i>	Population benefiting from a reduction in noise pollution
<i>Impact</i>	Population benefiting from a reduction of their vulnerability to the adverse effects of climate change	
Specific objective (a)2: <i>Develop, demonstrate, and promote innovative techniques and approaches and apply best practice in relation to nature and biodiversity</i>	<i>Output</i>	Projects that are developing, demonstrating, and promoting innovative techniques and approaches and applying best practices for nature and biodiversity
	<i>Output</i>	Projects, including strategic nature projects, implementing plans, strategies, or programmes of action for mainstreaming nature and biodiversity
	<i>Result</i>	Net change (biodiversity): area of habitats where loss of biodiversity is being halted or reversed
	<i>Result</i>	Net change (biodiversity): species where loss is being halted or reversed
Specific objective (b): <i>Support the development, implementation, monitoring and enforcement of relevant EU legislation and policy on the environment, climate and energy</i>	<i>Output</i>	Projects for the development, implementation, monitoring and enforcement of EU legislation and policies on environment, climate and energy action
	<i>Output</i>	Projects improving governance by increasing the capacities of public and private bodies and the involvement of civil society
	<i>Result</i>	Organisations involved in projects or receiving operating grants
Specific objective (c): <i>Act as a catalyst for the large-scale deployment of successful technical and policy-related solutions</i>	<i>Output</i>	Projects having a catalytic effect
	<i>Result</i>	Cumulative investments triggered by the projects or finance accessed

NB Some indicators can be relevant also for other objectives than the one to which they have been attributed; the table is to be interpreted as a simple representation (see Annex II for a comprehensive overview).

To ensure the measurability of the progress over the programming period and beyond for each core performance indicator, baselines, targets and intermediate milestones have been set. The method for setting baselines, targets and milestones is described in the indicators metadata (see Annex V).

To demonstrate the quality of data i.e. reliable, trustworthy and comparable, metadata have been prepared for each indicator describing key characteristics such as the source of information, what exactly the indicator measures, and when data will be available, together with other supplementary information (see Annex II).

3.2 LIFE programme monitoring of key aspects of implementation

An interim and an ex-post evaluation of the LIFE programme 2021-2027 are performed and, in addition to the analysis of the outputs, results and impacts, an important element for the assessment of the progress and success of the programme is the good implementation.

Implementation indicators are not strictly performance indicators since they do not refer to any specific objective of the programme and do not have a pre-defined target; however, they are to be considered as warning signals of potential challenges in the performance of individual projects and are essential for the assessment of crosscutting aspects of the programme.

Timely and accurate information on implementation is essential for evaluations but also as management tool, allowing the Commission to better diagnose problems and take the necessary corrective steps, where required, in a timely manner. The understanding of what is working well and where improvements might be needed, helps to inform programming and decision-making on the budget, reflected in the preparation of the Multiannual Work Programmes, and ultimately provides important insights for the design of the future programme.

Due to the LIFE programme configuration, essentially based on a top-down approach and with grants being the main instrument of the LIFE funding (around 85% of the overall budget), the projects are the bulk of the information, not only for aggregating the core performance indicators in relation to the performance of the programme, but also for monitoring progress of implementation and for calling attention on cross-sectional aspects.

Provisional data on projects are provided by the beneficiaries through forms (proposals template, key project indicators formats) and along implementation they are checked and enriched by CINEA and by regular controls run by external experts; finally, data are validated at the end of each project. Complementary to project information collected via e-Grants and project performance indicators collected from beneficiaries, information on some critical cross-sectional aspects' is collected and aggregated ad hoc.

Specifically, considering the challenges identified in the past, two different types of information are regularly collected:

data based on the characteristics of the projects and of participations are available in a timely manner in the CINEA dashboard, monitoring and presenting:

- the geographical distribution of LIFE financing – number of projects (i.e. signed agreements), number of participations (i.e. number of participants involved in the projects) and EU contribution (i.e. total EU funding granted) are sorted out and aggregated by country of coordinators. This information is relevant for monitoring interest, funding and success rates across EU countries;
- the clustering of projects by areas of intervention – number of projects (i.e. signed agreements), number of participations (i.e. number of participants involved in the projects) and EU contribution (i.e. total EU funding granted) are sorted out and aggregated by primary destination of each project. This information is relevant for highlighting commonalities and strategic rationale across projects that might otherwise appear fragmented.

These figures have generally a very high level of confidence and are easily verified; challenges remain for refining data collection and aggregation to represent also types of participants, as well as for highlighting also the secondary destination of the projects.

- information on specific aspects of the projects awarded, which is specific information provided by applicants and assessed by evaluators for the attribution of bonus points to the evaluation and which provides qualitative information on potential synergies with other spending EU spending programmes and co-benefits between LIFE sub-programmes. This information is relevant for the evaluation of the programme for assessing the internal and external coherence;
- catalytic potential of each project – which is a valuable and timely indication on the capacity of the programme to engender the replicability of solutions and the sustainability of actions over the time with the capacity to attract private or national funding. This information is relevant for the evaluation of the programme for assessing to assess the effectiveness and the value added of the programme.

This information is provided by beneficiaries and intrinsically of qualitative; the challenge is to triangulate with other sources of information (targeted interviews; case studies etc.) at the time of the evaluation.

3.3 LIFE programme monitoring of catalytic effect

What is catalytic effect?

Catalytic effect is the potential/capacity for a project result to be replicated in the same or other sectors or places, or to be upscaled by public or private bodies or through mobilising larger investments or financial resources.

A major component of the LIFE programme is the catalytic effect that the programme is expected to generate by inducing the large-scale deployment of successful technical and policy-related solutions that can support more advanced implementation of environmental, climate and energy policies.

In order to be able to monitor the catalytic effect of the programme, a framework of specific indicators has been designed addressing five key dimensions.

<i>Temporal</i>	Projects will have an impact beyond the lifetime of the ‘funded’ projects, as the knowledge will continue to be shared beyond the end of the project, or the technology will continue to be utilised. The impact of a project beyond its duration is difficult to quantify in terms of years; rather, temporal impacts can be monitored with respect to expected long-term impacts (i.e. after project completion).
<i>Thematic</i>	<p>Project impacts may be replicated in other thematic areas. For example, a technology or practice developed as a result of LIFE nature and biodiversity funding to halt and reverse biodiversity loss may be replicated in relation to circular economy and quality of life to protect, restore or improve soil quality. To demonstrate a thematic catalytic effect, there must be clear evidence to show how the benefits have been transferred. In broad terms, thematic areas that are covered by the LIFE programme 2021-2027 are:</p> <ul style="list-style-type: none"> ▪ Nature and biodiversity ▪ Air quality ▪ Soil ▪ Water ▪ Waste ▪ Chemicals ▪ Noise ▪ Resource use and efficiency ▪ Climate change mitigation ▪ Climate change adaptation ▪ Renewable energy ▪ Energy efficiency
<i>Spatial</i>	Project impacts may be replicated beyond the geographic boundary of the project. This can include the sharing of knowledge with neighbouring regions, or the application of practices or technologies at other locations in other countries.
<i>Financial</i>	LIFE-funded projects can improve access to finance, and thereby unlock additional investment that would otherwise not be available.
<i>Societal</i>	LIFE projects can demonstrably contribute to improved policy development, policy implementation, monitoring and evaluation, access to justice and information, awareness raising or networking.

A set of indicators has been developed to capture information on the number of projects having a (combined) catalytic effect during the lifetime of the projects (i.e. by the end date of individual projects), or expected during the first 3-5 years immediately following completion of individual projects where the catalytic effect is categorised as ‘stable’ or ‘increasing’.

The (combined) catalytic effect is the number of projects where one or more of the dimensions apply.

The purpose of the indicators is to provide a robust and simple means of monitoring progress in relation to each of the dimensions. It should be clear that individual ratings of each dimension will be insufficient to report on the catalytic effect, and only when combined at programme level are they expected to provide meaningful insights (see Annex III: Framework for monitoring the catalytic effect of LIFE projects).

3.4 Cross-cutting policy indicators

The EU budget is more than the sum of its parts and the Commission makes use of all available means, legislative as well as financial, cutting across many different policy areas and programmes, to achieve its policy goals.

Specifically for the EU’s environmental and climate objectives, the EU budget under MFF 2021-2027 remains relatively small compared with the EU ambitions, but by mobilising all relevant programmes and acting as a catalyst for other public and private sector investment, it can help achieve the EU’s ambitions.

To ensure monitoring of the link between the LIFE programme and EU policies, the following output indicators have been defined.

Policy	Type	Evidence
European Green Deal ⁵	<i>Output</i>	Number of projects contributing to the European Green Deal
Circular economy strategy ⁶	<i>Output</i>	Number of projects contributing to the circular economy strategy
Zero pollution action plan ⁷	<i>Output</i>	Number of projects contributing to the zero pollution action plan

Similarly, by emphasising in its annual reporting the progress achieved through EU programmes on the United Nations Sustainable Development Goals (SDGs), the Commission underscores the EU’s commitment to playing a key role globally in supporting their achievement.

The LIFE programme’s funded activities, depending on their scope, can contribute mainly to the goals set out below.



SDG 2 *End hunger, achieve food security and improved nutrition and promote sustainable agriculture*

In LIFE, the promotion of sustainable agriculture is pursued in the framework of the nature and biodiversity projects and in the projects pursuing resource efficiency, clean water and water savings, soils, carbon farming and climate adaptation solutions

⁵ Communication from the Commission to the European Parliament, the European Council, the Council, the European Economic and Social Committee and the Committee of the Regions. *The European Green Deal*. COM/2019/640 final.

⁶ Communication from the Commission to the European Parliament, the Council, the European Economic and Social Committee and the Committee of the Regions, *A new Circular Economy Action Plan for a cleaner and more competitive Europe*, COM(2020) 98 final.

⁷ Communication from the Commission to the European Parliament, the Council, the European Economic and Social Committee and the Committee of the Regions, *Pathway to a Healthy Planet for All - EU Action Plan: 'Towards Zero Pollution for Air, Water and Soil'*, COM(2021) 400 final.



SDG 3 *Ensure healthy lives and promote well-being for all at all ages*

LIFE funds projects that work on improving air quality and addressing specific air pollutants, and projects setting out solutions to heatwaves and other extreme weather events and their impacts on health



SDG 6 *Ensure availability and sustainable management of water and sanitation for all*

LIFE projects help to prevent pollution, ensure climate-resilient, sustainable use and management of water, and improve the ecological status of water bodies



SDG 7 *Ensure access to affordable, reliable, sustainable and modern energy for all*

Under the LIFE programme, aspects of sustainable energy have been considered under the subprogrammes on circular economy and climate change mitigation and adaptation. Moreover, the LIFE programme 2021-2027 includes a dedicated subprogramme: the LIFE Clean Energy Transition.



SDG 8 *Promote sustained, inclusive and sustainable economic growth, full and productive employment and decent work for all*

LIFE is a catalyst for investments in innovative green businesses that will help generate more jobs, both directly and indirectly



SDG 9 *Build resilient infrastructure, promote inclusive and sustainable industrialisation and foster innovation*

LIFE promotes sustainable industry processes such as reduction of waste, water use, CO₂ emissions, etc.



SDG 11 *Make cities and human settlements inclusive, safe, resilient and sustainable*

LIFE supports cities in their ambitions towards better health, increased sustainability, or improved resilience to climate change. Projects pursue various aims, ranging from improvements in air quality, including the transition to carbon neutrality, to sustainable management of water, and to the integration of biodiversity conservation in urban landscapes.



SDG 12 *Ensure sustainable consumption and production patterns*

LIFE contributes to the shift towards a sustainable, circular and climate-neutral economy by financing: innovative solutions to support value-added recycled materials, components, or products; the implementation of business and consumption models or solutions to support value chains, in particularly under the EU action plan for the circular economy; and the identification, tracking, separation, prevention and decontamination of waste containing hazardous substances.



SDG 13 *Take urgent action to combat climate change and its impacts*

Although all LIFE subprogrammes contribute to preventing and mitigating the adverse effects of climate change, one LIFE subprogramme is fully dedicated to climate change mitigation and adaptation. The subprogramme on clean energy transition focuses specifically on fostering the transition to more sustainable forms of energy consumption. Given that 75% of GHGs emitted in the EU come from energy consumption, clean energy transition is a fundamental area to address climate change.



SDG 14 *Conserve and sustainably use the oceans, seas and marine resources for sustainable development*

Established together with the Nature Directives, the LIFE programme has among its core activities the support to nature and biodiversity. Over the years, LIFE projects have contributed to the identification and designation of both the marine and terrestrial Natura 2000 network, purchased tens of thousands of hectares of the EU's rarest and most endangered habitat types, and restored degraded ecosystems, safeguarded numerous species from extinction, ensured the recovery of many local and endemic species, and supported practical measures on the ground to prevent, control and eradicate invasive alien species.



SDG 15 *Protect, restore and promote sustainable use of terrestrial ecosystems, sustainably manage forests, combat desertification, and halt and reverse land degradation and halt biodiversity loss*

The LIFE programme plays a crucial role in helping Member States to achieve various targets of the EU biodiversity strategy for 2030. There are already numerous projects in place to assist in the recovery of highly threatened species and the restoration of thousands of hectares of degraded habitats. LIFE projects are also helping to identify 'high nature value' areas that are not yet protected, and ecological corridors needed to ensure connectivity between Natura 2000 sites, and to establish a consolidated trans-European nature network by 2030. Finally, the LIFE programme is delivering hundreds of kilometres of free-flowing rivers, planting hundreds of thousands of trees, working with stakeholders, building partnerships and increasing public awareness of the indispensable services that nature provides.

LIFE-funded activities can contribute to the following SDGs, on an ad hoc basis:



SDG 1 *End poverty in all its forms everywhere*

The LIFE programme does not aim to directly address poverty. However, some projects may include activities directed at not leaving anyone behind and/or to promote social justice in reaching climate neutrality



SDG 4 *Ensure inclusive and equitable quality education and promote lifelong learning opportunities for all*

Recurrent activities in the LIFE-funded projects include knowledge sharing, awareness raising and training activities, helping to promote new sustainable practices and develop green skills



SDG 5 *Achieve gender equality and empower all women and girls*

Some LIFE projects have a gender dimension, in particular linking with the One Health approach, and addressing environment and health



SDG 16 *Promote peaceful and inclusive societies for sustainable development, provide access to justice for all and build effective, accountable and inclusive institutions at all levels*

LIFE projects have increased the capacity of an EU network of environmental prosecutors to share information and develop best practice to tackle environmental crime. They have developed strategic partnerships and shared information relating to environmental prosecutions throughout the EU and the rest of the world.

To acknowledge the general contribution of LIFE-funded activities to progress towards the achievement of SDG goals, a set of representative indicators has been identified and these are regularly monitored (see Annex II).

3.5 Mainstreaming

Both climate and environmental policy are at the heart of EU policymaking. This is in line with the Treaties⁸, which define environmental protection as a core task of the EU.

In the 2014-2020 multiannual financial framework, the Commission introduced a new approach - climate mainstreaming - to help earmark financial resources for the fight against climate change.

In the December 2020 Interinstitutional Agreement (IIA)⁹ that accompanied the agreement on the multiannual financial framework, the Commission, the European Parliament and the Council committed to strengthen the EU budget's contribution to EU policies for environment and climate.

The LIFE programme brings a contribution to mainstreaming primarily for climate, clean energy, biodiversity and clean air financing.

⁸ Article 11 and Article 191 Treaty on the Functioning of the European Union; Article 37 of the EU Charter of Fundamental Rights.

⁹ LI 433/28, Interinstitutional Agreement of 16 December 2020 between the European Parliament, the Council of the European Union and the European Commission on budgetary discipline, on cooperation in budgetary matters and on sound financial management, as well as on new own resources, including a roadmap towards the introduction of new own resources.

Climate mainstreaming

What is mainstreaming?

To achieve policy objectives of a horizontal nature, it is necessary that multiple instruments, legislative and/or budgetary, contribute to their fulfilment. In the context of the EU budget, mainstreaming is defined as the inclusion of a specific priority in the design, preparation, implementation and evaluation phases of all budgetary programmes, in order to maximise their contribution to policy objectives, promote synergies, and improve spending coherence.

The LIFE programme contributes to the overall target of 30% climate spending in the EU budget for the 2021-2027 period through all its subprogrammes.

- All the subprogrammes on climate change mitigation and adaptation and clean energy transition finance activities directly aimed at contributing to cut our greenhouse gas (GHG) emissions to net-zero and to improve preparedness and capacity to respond to the impacts of climate change.

- The subprogramme nature and biodiversity aims to protect, maintain and restore the EU's natural capital in its marine, freshwater and terrestrial ecosystems. Some of its activities contribute substantially to adapting to the adverse effects of climate change and

to mitigating GHG emissions.

- The subprogramme circular economy and quality of life aims at facilitating the transition toward a sustainable, circular, toxic-free, energy-efficient and climate-resilient environment by reducing resource consumption, contributing to the quality of waters and air, preventing soil degradation and increasing their resilience. It will thus contribute to climate action.

Biodiversity tracking

The LIFE programme contributes to [biodiversity financing](#) through three subprogrammes.

- The subprogramme nature and biodiversity aims to protect and restore the EU's nature and to halt and reverse biodiversity loss. It funds nature conservation projects, in particular in the areas of biodiversity, habitats and species. It also supports implementation of the EU Birds and Habitats directives, and in particular the development and management of the Natura 2000 network, and the Invasive Alien Species Regulation through projects and studies. This subprogramme contributes in full to the objectives and targets of the EU's biodiversity strategy for 2030.

- Some projects of the sub-programme circular economy and quality of life, in particular for:
 - *Water and seas*: the protection and improvement of groundwater and surface water quality and the prevention and elimination of water and marine pollutants with a view to achieve and maintain a good chemical and ecological status of water bodies;
 - *Air*: the protection of air and the improvement of air quality through the prevention and/or reduction of air pollutants;
 - *Soil*: the restoration, remediation, protection and improvement of soil health, within natural or managed ecosystem boundaries, with a view to provide ecosystem services, including to sustain plant and animal productivity and maintain or enhance water and air quality and to prevent soil loss;

- *Chemicals management*: a more sustainable use of chemical substances and mixtures, on their own and in articles and final products (including e.g. pesticides, fertilisers, antimicrobials and nanomaterials).

▪ Some of the projects financed under the sub-programme climate change mitigation and adaptation, in particular:

- the roll-out of *viable nature-based solutions* in the management of land, coastal and marine areas including through assessments, guidance, capacity building, and suitable financial approaches and products;

- approaches and solutions to ensure a stable and secure supply of *high-quality freshwater*, *prevent droughts*, *reduce water use*, *protect and restore wetlands*, and *prevent floods*.

Clean air tracking

The [methodology](#) for calculating air quality spending was defined at the beginning of 2020 based on Rio markers, with the intention to capture the contribution of the programme to ‘clean air’, thus encompassing actions both on increasing air quality and on reducing air pollution. The financing for air quality is assessed at project level as follows:

▪ 100% contribution for LIFE projects focused on clean air, including relevant climate change mitigation projects; and

▪ 40% contribution for LIFE expenditure on projects significantly contributing to clean air as a secondary benefit.

The LIFE programme directly contributes to each of the six environmental objectives established in the [Taxonomy Regulation](#) i.e. climate change mitigation, climate change adaptation, the sustainable use and protection of water and marine resources, the transition to a circular economy, pollution prevention and control, and the protection and restoration of biodiversity and ecosystems.

The multiannual work programmes integrate the green oath and the ‘do no harm’ principle at the level of each sub-programme and for the selection of the proposals.

The LIFE programme contributes to the overall target of 30% of climate spending in the EU budget for the 2021-2027 period; actions under the LIFE programme are expected to contribute with 61% of its overall financial allocation committed to climate objectives.

(See Annex IV: Methodology for mainstreaming).

3.6 Project-level data & information management

Data and information on the implementation of projects are particularly important for LIFE, not only for judging the performance of each project in relation to its milestones and targets, but also for being able to assess the success of the programme and the progress towards achieving the programme objectives.

The number and scope of successful projects mainly depend on factors that the Commission cannot influence, e.g. the number of eligible applications, the needs addressed and the

capacity of the applicant. For this reason, the milestones and targets should be considered indicative.

In line with the LIFE Regulation¹⁰, the indicators mainly address issues in a project-centric way and are mainly focused on project outputs, outcomes and impact because action grants correspond to the bulk of the funding (a minimum of 85% of the overall budget).

The LIFE programme has in place a well-structured system for collection and management of data and information relating to LIFE-funded projects.

A system for collecting key indicators at project level has been established so that the project-level data can be collected regularly and can be aggregated at the programme level in a pyramidal approach. This has not been without difficulties, since project baselines, metrics, time frames and reporting vary between projects¹¹.

The LIFE projects' database

Developed in 2016, the LIFE Project Indicators Database contains information concerning all LIFE projects financed by grants as from 2015, as well as certain projects from the 2007-2013 programme. The contents of this database are based on input from the project applicants/beneficiaries, which is checked by the LIFE programme monitors (when applicable) and then validated by the operational officer in CINEA.

However, it should be clear that the project-level indicators have limited capacity to represent the whole performance of the programme, but they certainly provide valuable complementary information and are a powerful management tool, helping the Commission to better diagnose problems and take the necessary corrective steps, where required, in a timely manner.

On the other hand, this pyramidal approach helps the grant monitoring, thanks to the attention devoted to project results, which are also used as a source of information on the performance of the programme.

The key project indicators (KPIs) are not only used as source for the programme performance indicators but are also a major source of information for monitoring the progress and achievements of the projects. The main sources for quantitative data are described below.

¹⁰ See Article 19(4) of the LIFE Regulation: 'The Commission shall ensure that data for monitoring programme implementation and results are collected efficiently, effectively, and in a timely manner. To that end, and in accordance with relevant methodologies, proportionate reporting requirements shall be imposed on recipients of Union funds to enable the collection of aggregable project-level output and impact indicators for all relevant specific environment and climate policy objectives, including in relation to Natura 2000 and the emissions of certain atmospheric air pollutants, including CO₂.'

¹¹ For example, under the priority area biodiversity, some projects aim at increasing the population size of an endangered species while others aim at protecting the total captive population at a given number of animals. Therefore the aggregated value related to the increase/protection from the baseline, in terms of number of individuals even as a percentage, does not make any sense.

- Information on the values¹² and specifications on the proposals and projects are collected from the Commission systems used for the operational and financial management of applications and projects (e.g. eGrants, ABAC).
- For the implementation of each project, beneficiaries are asked to provide a set of key indicators corresponding to the sector priority area on which the project focuses, as well as to the project's societal and economic outcomes. They can also add a complementary indicator if it is considered important to reflect the multipurpose character of the project and the synergy it creates.
- At the end of the project, the beneficiaries are required to update the values of the indicators, thus providing information on the final results of the project (as against the those initially expected) and to prepare an after-LIFE plan to set out how they intend to sustain and replicate the activities and further disseminate the project results.
- For each project, the beneficiaries also establish *ex ante* baselines and targets that will help the Commission to evaluate the performance of the project at its end and 3 years thereafter.
- Project-level indicators provided by the beneficiaries are checked by a team of external monitoring experts with experience in the specific field and in the concerned country. For all projects, they are validated by the operational officer who is entrusted with the technical supervision of the project. During the project, results are monitored at least once. Additional checks (both manual and automated) have been set by CINEA to further increase the confidence in the project data by performing horizontal checks at programme level to identify possible errors in the reported data and to apply corrections, as necessary.

4. LIFE MONITORING PROCESS

The programme is regularly monitored on an annual basis and results are disseminated through programme statements, which feed into the draft budget procedure, and through the annual monitoring and performance report, which feeds into the discharge procedure.

A first consistent set of indicators on project outputs and partial results are expected from year 3. This set of indicators will enable an assessment of extent to which the programme is progressing towards its objectives, based on predefined baselines and targets.

Moreover, regular monitoring on mainstreaming of climate and biodiversity, including the amount of expenditure, is also ensured by the annual monitoring exercise.

The contribution of the LIFE programme to the EU budget-wide target of 30% of expenditure contributing to climate objectives is tracked through the EU climate marker system.

¹² For values, we refer to the state of play as regards the relevant descriptor in numbers (e.g. number of hectares targeted under the project) or as standard text or symbols (e.g. 'U2' for 'unfavourable bad) and directly corresponds to the relevant measuring unit.

Biodiversity-related spending will be tracked using a specific set of markers to quantify the commitment appropriations expected to contribute, respectively, to climate and to biodiversity objectives over the period 2021-2027 at the appropriate level of disaggregation.

Monitoring arrangements and indicators collected by the monitoring are a crucial input for the evaluations. With respect to the monitoring activities, the evaluations will also look at the wider perspective providing an independent, impartial and unbiased analysis of how well the programmes have achieved their objectives, and how relevant they are in adding value to the lives of the EU population. This will enable lessons to be drawn on the strengths and weaknesses of the programmes.

5. LIFE EVALUATION PROCESS

Figure 6: EU policy cycle



Evaluation is an essential part of the policy cycle, as it facilitates evidence-based policy design and implementation, increasing the policy's accountability and transparency, demonstrating achievements towards policy objectives and assessing the effectiveness, efficiency, results and impacts of policies. Evaluations are an integral part of the EU policy cycle.

The LIFE programme has three evaluations: (*ex ante*) impact evaluation, midterm evaluation and *ex post* evaluations.

Under the MFF 2021-2027, and in accordance with Article 20 of the LIFE Regulation, the Commission has to carry out the midterm evaluation of the LIFE Programme no later than 42 months after the start of the implementation, and the final evaluation at the end of the implementation of the LIFE Programme, but no later than 4 years after the MFF 2021-2027.

The evaluations assess the LIFE programme's effects on the ground based on the programme indicators/targets. They also provide a detailed analysis of the degree to which the programme can be deemed relevant, effective, efficient, and whether it provides enough EU added value and whether it is consistent with other EU policies. They also include lessons learnt to identify any shortcomings/problems or any potential to further improve the actions or their results and to help maximise their exploitation/impact.

The midterm evaluation should capture the first anticipated outputs and outcomes of the LIFE programme 2021-2027. The *ex post* evaluation at the end of the programming period should capture the ongoing and the final anticipated outcomes of the programme and the final outcomes and impact of the current LIFE programme and the previous LIFE+ programme.

ANNEX I: LIFE PROGRAMME INTERVENTION LOGIC



ANNEX II: LIFE KEY MONITORING INDICATORS - ANALYTICAL FRAMEWORK

Indicator	LIFE objectives				EU policies			SDGs
	a.1	a.2	b	c	Climate	Bio diversity	Clean air	
Projects that are developing, demonstrating and promoting innovative techniques and approaches to contribute to the shift towards a sustainable, circular, energy-efficient, renewable energy-based, climate-neutral and -resilient economy	X				X	X	X	13-14-15
Projects, including strategic integrated projects, implementing key plans and strategies	X		X		X	X		13-14-16
Projects that are developing, demonstrating and promoting innovative techniques and approaches and applying best practices for nature and biodiversity		X			X	X		14-15
Projects, including strategic nature projects, implementing plan, strategies or programmes of action for mainstreaming nature and biodiversity		X	X		X	X	X	14-15
Projects for the development, implementation, monitoring and enforcement of Union legislation and policies on environment, climate and energy action			X		X	X	X	13-14-15
Projects improving governance by enhancing the capacities of public and private actors and the involvement of civil society			X		X	X	X	13-14-15
Population benefitting from an improvement in air quality	X				X		X	3-11
Area of land with improving soil quality	X	X			X	X		2-15
Water bodies with improving ecological status	X	X			X	X		6-11
Water management with increasing efficiency	X	X			X	X		6-11
Waste which management is improving	X							3-11
Reduction in the production and use of dangerous chemicals	X							3
Population benefitting from a reduction in noise pollution	X							3-11
Reduction of Greenhouse Gas Emissions	X				X		X	13
Population benefitting from a reduction of their vulnerability to the adverse effects of climate change	X				X			13
Additional annual primary energy savings	X				X			7
Additional annual renewable energy production	X				X			7
Area of habitats where loss of biodiversity is being halted or reversed	X	X						14-15
Species where loss is being halted or reversed	X	X						14-15
Organisations involved in projects or receiving operating grants			X					11-12
Projects having a catalytic effect				X				
Cumulative investments triggered by the projects or finance accessed				X				
Contribution to climate mainstreaming				X	X	X	X	13
Contribution to biodiversity mainstreaming				X	X	X		14-15
Contribution to clean air financing				X			X	3

Legend:

LIFE specific objectives

a.1 - Develop, demonstrate and promote innovative techniques, methods and approaches for reaching the objectives of the Union legislation and policy on environment, and on climate action, including the transition to renewable energy and increased energy efficiency, and to contribute to the knowledge base and to the application of best practice, in particular in relation to nature and biodiversity, including through the support of the Natura 2000 network

a.2 - Develop, demonstrate and promote innovative techniques and approaches and apply best practice in relation to nature and biodiversity

b - Contribute to support the development, implementation, monitoring and enforcement of the Union legislation and policy on environment and on climate action and the transition to renewable energy or increased energy efficiency, including by improving governance at all levels, in particular through enhancing capacities of public and private actors and the involvement of civil society;

c - Play a catalytic role in the replication and the triggering of large-scale deployment of successful technical and policy-related solutions.

Sustainable Development Goals (SDGs)

SDG 2 End hunger, achieve food security & improved nutrition & promote sustainable agriculture

SDG 3 Ensure healthy lives and promote well-being for all at all ages

SDG 6 Ensure availability and sustainable management of water and sanitation

SDG 7 Ensure access to affordable, reliable, sustainable and modern energy for all

SDG 8 Promote sustained, inclusive and sustainable economic growth, full and productive employment and decent work for all

SDG 9 Build resilient infrastructure, promote inclusive and sustainable industrialization and foster innovation

SDG 11 Make cities and human settlements inclusive, safe, resilient and sustainable

SDG 12 Ensure sustainable consumption and production patterns

SDG 13 Take urgent action to combat climate change and its impacts

SDG 14 Conserve & sustainably use the oceans, seas and marine resources for sustainable development

SDG 15 Protect, restore and promote sustainable use of terrestrial ecosystems, sustainably manage forests, combat desertification, and halt and reverse land degradation and halt biodiversity loss

ANNEX III: METHOD FOR MEASURING CATALYTIC EFFECT

The assessment of the catalytic effect of the Programme is extremely difficult because LIFE funds small and heterogeneous projects. Moreover, the related indicators need to incorporate the different possible dimensions of the catalytic effect delivered.

A framework has been developed for setting a credible and stable measurement catalytic effect of LIFE projects. The framework comprises five of the catalytic dimensions: temporal, financial, societal, thematic and spatial.

At project level, where available, the anticipated project results for each indicator for each timeframe will be rated according to the following trends: Stopped; Decreasing; Stable; Increasing; Unknown.

In contrast, at programme level, the results will be presented in quantitative terms as the number of projects having a (combined) catalytic effect during the lifetime of projects (i.e. by the end date of individual projects), or anticipated during the first three to five years immediately following completion of individual projects where the catalytic effect is categorised as ‘stable’ or ‘increasing’.

The (combined) catalytic effect is the number of projects where one or more of the dimensions apply. At programme level, the measurement of catalytic effect can be reported for each dimension separately.

Indicator	Data description	Unit of measurement	Reference period
<i>Catalytic dimension: Temporal</i>			
Projects for which the trend in financial, societal, thematic and/or spatial dimensions is ‘stable’ or ‘increasing’ at the end of the project and/or are anticipated to be ‘stable’ or ‘increasing’ three to five years thereafter	<p>The indicator will measure the number of projects where the thematic, spatial, societal and financial dimensions are expected to be ‘stable’ or ‘increasing’ during:</p> <ol style="list-style-type: none"> 1. The lifetime of projects (i.e. by the end date of projects) 2. The first three to five years immediately following completion of individual projects. 	<p>Number of projects, categorised as follows:</p> <ul style="list-style-type: none"> ▪ Stopped ▪ Decreasing ▪ Stable ▪ Increasing ▪ Unknown 	<p>The lifetime of LIFE projects for four dimensions (thematic, spatial, societal and financial) and after completion of projects for two dimensions (financial and societal)</p>

Indicator	Data description	Unit of measurement	Reference period
<i>Catalytic dimension: Thematic</i>			
<p>Projects for which results are replicated in other thematic areas beyond each project's intended scope</p>	<p>Thematic areas are defined with respect to areas that are covered by the LIFE Programme 2021-2027 including, Nature and biodiversity, Air quality, Soil, Water, Waste, Chemicals, Noise, Resource use and efficiency, Climate change mitigation, Climate change adaptation, Renewable energy and Energy efficiency.</p> <p>Replication is defined in accordance with the 2016 LIFE guidelines¹³:</p> <p>“Replicability and transferability is the potential of the project to be replicated and transferred during and after its implementation. Successful replicability and transferability require a strategy including tasks to multiply the impacts of the projects' solutions and mobilise a wider uptake, reaching a critical mass during the project and/or in a short- and medium-term perspective after the end of the LIFE project.</p> <p>This goes beyond transfer of knowledge and networking, and involves putting the techniques, methods or strategies developed or applied in the project into practice elsewhere. Replicability and transferability go beyond dissemination and concern activities and approaches, integrated in all relevant project actions, which aim to facilitate the replication and/or transfer of the project's results and experiences beyond the project, including in other sectors, entities, regions or countries.”</p>	<p>Number of projects where results are replicated in other thematic areas beyond each project's intended scope</p>	<p>The lifetime of LIFE projects. Project beneficiaries will only report replication during the lifetime of projects, as estimating thematic replication after completion of projects is affected by many variables and so its attribution is too uncertain.</p>

¹³ Guidelines for applicants 2016. LIFE Environment and Resource Efficiency. https://ec.europa.eu/easme/sites/easme-site/files/life_2016_environment_and_resource_efficiency_application_guide.pdf

Indicator	Data description	Unit of measurement	Reference period
<i>Catalytic dimension: Spatial</i>			
Projects for which results are replicated beyond each project's intended spatial scale	<p>The indicator will measure the number of LIFE projects where impacts are beyond their intended spatial scale. The spatial scale will be measured according to each project's activities (i.e. subnational, national, or international).</p> <p>The number of projects will be used to monitor progress against this indicator to ensure aggregability between the range of spatial scales that may be relevant to LIFE projects.</p> <p>Replicability and transferability refer to the potential of the project to be replicated and transferred during and after its implementation – see row above for full definition (with reference to the 2016 LIFE guidelines).</p>	<p>Number of projects where results are replicated beyond each project's intended spatial scale.</p> <p>Numbers will be grouped by:</p> <ul style="list-style-type: none"> ▪ subnational ▪ national ▪ international 	<p>The lifetime of LIFE projects. Project beneficiaries will only report against the impact during the lifetime of the project, as estimating spatial replication after completion of projects is affected by many variables and so its attribution is too uncertain.</p>

Catalytic dimension: Financial

Projects that report 'Cumulative investments triggered by the projects or finance accessed (million EUR)' or/and 'amount of cumulative investments triggered by the project'	<p>Projects beneficiaries will report a range value in EUR (millions), which can be easily aggregated at the programme level.</p> <p>The indicator will show how the LIFE Programme has developed synergies with other EU financial instruments and other national public or private funds, particularly regarding SNAPs and SIPs, to support the uptake and replication of solutions developed under the LIFE Programme. The key characteristic of this indicator is that it only covers complementary funding that will be mobilised during the LIFE project and directed to support the objectives of the LIFE Programme. It does not include co-financing by project beneficiaries and/or co-financiers that constitute part of the approved project budget.</p> <p>To provide context for the indicator value reported (range value in million EUR), the number of projects will also be reported.</p>	<p>Number of projects that report 'Cumulative investments triggered by the projects or finance accessed 'amount of cumulative investments in sustainable energy triggered by the project'</p> <p>Range value - [minimum value in million EUR] – [maximum value in million EUR]</p>	<p>1) The lifetime of LIFE projects, and 2) Three to five years immediately following their completion</p>
--	---	--	--

Indicator	Data description	Unit of measurement	Reference period
-----------	------------------	---------------------	------------------

Catalytic dimension: Financial

Projects improving governance through enhancing capacities of public and private actors and the involvement of civil society	<p>The indicator will monitor how many LIFE projects contribute to supporting EU environmental policy and legislation through improving governance by:</p> <ul style="list-style-type: none"> ▪ Contributing substantially to the development of new or existing national legislation, policies, regulations, incentives and voluntary commitments ▪ Achieving a step-change in more effective compliance with and enforcement of Union environmental and climate legislation and/or in policy implementation ▪ Achieving a step-change in awareness and support of environmental and climate matters ▪ Establishing a new macroregional or national model of cooperation (networking). 	Number of projects	<p>1) The lifetime of LIFE projects, 2) Three to five years immediately following their completion</p>
--	---	--------------------	--

Mainstreaming

No specific indicator required	<p>The LIFE Programme is designed to help facilitate mainstreaming in other budget programmes, particularly through the funding of integrated projects. As such, mainstreaming can be monitored through a combination of the information gathered for the other dimensions of catalytic effect described here. Hence, it was agreed that an additional indicator to measure the catalytic impact of mainstreaming is not required.</p>	n/a	n/a
--------------------------------	--	-----	-----

ANNEX IV: CLIMATE MAINSTREAMING – METHODOLOGY

Based on the methodology used during the 2014- 2020 period to track green expenditure under the EU budget, for the 2021–2027 MFF, the Commission has further developed its approach with a classification of types of action based on their expected effects on climate, in a consistent manner across the EU budget.



EU climate coefficients are assigned according to the following categories of criteria:

- 100%: the activity is expected to make a substantial contribution to climate change mitigation or adaptation objectives in line with EU climate goals;
- 40%: the activity is expected to make a non-marginal, positive contribution to climate change mitigation or adaptation objectives. The activity’s contribution to climate objectives can again be direct or indirect;
- 0%: the activity is expected to have a neutral impact on climate objectives.

As part of the 2021--2027 climate mainstreaming architecture, the 30% target has been broken down into specific targets for individual programmes. In the LIFE regulation (EU) 2021/783 (recital 29) states that actions under the LIFE Programme are expected to contribute 61 % of the overall financial envelope of the LIFE Programme to climate objectives.

The respective coefficients to track climate-relevant expenditure are the following:

Intervention	Climate coefficient	Effect-based criteria
Energy	100%	<p>Under the sub-programme Clean energy transition:</p> <ul style="list-style-type: none"> ▪ Development and uptake of services and solutions for energy efficiency and renewable deployment measures, including in building renovations, in line with EU climate and energy targets Programme Support to public and private actors for the development and uptake of renewable energy communities ▪ Programme support to public and private actors providing technical assistance, financial advice and innovative financing solutions for the development and aggregation of energy efficiency and sustainable energy investments

Intervention	Climate coefficient	Effect-based criteria
Environment & natural resources	40%	<p>Under the sub-programme Nature & Biodiversity and the sub-programme Circular economy and quality of life:</p> <ul style="list-style-type: none"> ▪ Activities developing solutions and best practices reducing impacts of the economy on natural resources and/or contributing to positive impacts on the environment, improving habitats and ecosystems and halting and reversing biodiversity loss ▪ Any such activities with a demonstrated high potential for: <ul style="list-style-type: none"> - Adaptation to climate change adaptation and prevention and management of climate change risks (e.g., floods and landslides; fires; storm and droughts); and/or - Mitigation of climate change (measures promoting carbon absorption and storage such as rewetting of moorlands and capture of landfill gas)
	100%	
	40%	
	100%	
Climate change adaptation and mitigation	100%	<p>Under the sub-programmes Climate change mitigation & adaptation and Clean energy transition:</p> <ul style="list-style-type: none"> ▪ Activities directly aimed at contributing to cut our greenhouse gas (GHG) emissions to net-zero and to improve preparedness and capacity to respond to the impacts of climate change
Good governance & Social dimension	100%	<p>Activities with a demonstrated high potential for climate adaptation and/or climate mitigation that:</p> <ul style="list-style-type: none"> ▪ Enhance the capacities of public and private actors and the involvement of civil society in environmental, climate and sustainable energy (energy efficiency and renewable energy) governance ▪ Support the development, implementation, monitoring and enforcement of environmental, climate and sustainable energy (energy efficiency and renewable energy) Union legislation and policies ▪ Support citizen-led and community-driven initiatives in the field of sustainable energy (energy efficiency and sustainable energy)

See COMMISSION STAFF WORKING DOCUMENT [Climate Mainstreaming Architecture in the 2021-2027 Multiannual Financial Framework](#)

ANNEX V : KEY MONITORING INDICATORS: METADATA

Projects that are developing, demonstrating and promoting innovative techniques and approaches to contribute to the shift towards a sustainable, circular, energy-efficient, renewable energy-based, climate-neutral and -resilient economy	43
Projects, including strategic integrated projects, implementing key plans and strategies	45
Projects that are developing, demonstrating and promoting innovative techniques and approaches and applying best practices for nature and biodiversity	47
Projects, including strategic nature projects, implementing plan, strategies or programmes of action for mainstreaming nature and biodiversity	49
Projects for the development, implementation, monitoring and enforcement of Union legislation and policies on environment, climate and energy action	51
Population benefitting from an improvement in air quality	53
Area of land with improving soil quality	55
Water bodies with improving ecological status	57
Water management with increasing efficiency	59
Waste which management is improving	61
Reduction in the production and use of dangerous chemicals	63
Population benefitting from a reduction in noise pollution	65
Reduction of Greenhouse Gas Emissions	67
Population benefitting from a reduction of their vulnerability to the adverse effects of climate change	69
Additional annual primary energy savings	71
Additional annual renewable energy production	73
Area of habitats where loss of biodiversity is being halted or reversed	75
Species where loss is being halted or reversed	77
Organisations involved in projects or receiving operating grants	79
Projects having a catalytic effect	81
Cumulative investments triggered by the projects or finance accessed	83

Projects that are developing, demonstrating and promoting innovative techniques and approaches to contribute to the shift towards a sustainable, circular, energy-efficient, renewable energy-based, climate-neutral and -resilient economy

<i>Objective</i>	Develop, demonstrate and promote innovative techniques, methods and approaches for reaching the objectives of the Union legislation and policy on environment, and on climate action, including the transition to renewable energy and increased energy efficiency, and to contribute to the knowledge base and to the application of best practice, in particular in relation to nature and biodiversity, including through the support of the Natura 2000 network;
<i>Type of indicator</i>	Output
<i>Unit of measurement</i>	Number of projects
<i>Data source</i>	LIFE project database / Egrants
<i>Link to the objective</i>	Link to Specific Objective 1: Contribute to the shift toward a clean, circular, energy efficient, low-carbon and climate resilient economy and in particular to "develop, demonstrate and promote innovative techniques, methods and approaches for reaching the objectives of the Union legislation and policy on environment and on climate action, including the transition to renewable energy and increased energy efficiency, and to contribute to the knowledge base"
<i>Link MFF 14-20 / MFF 21-27</i>	It was not included in the indicators reported in previous programme statements. Data on this indicator in the period 2014-2020 are available.
<i>Other methodological comments</i>	Taking into account the project life cycle and the delays in the start-up of the programme implementation, data will be available starting from 2024. Data are cumulative. Milestones and targets are based on historical trends and projections on the average size and the estimated budget allocations for these projects. The actual outputs will depend on these variables and on the scope of projects retained for funding after the evaluation process.
<i>Ind. brief definition</i>	Number of LIFE projects financed in the years 2021-2027 that are developing, demonstrating and promoting innovative techniques and approaches to contribute to the shift toward a clean, circular, energy efficient, low-carbon and climate resilient economy
<i>Underlying definition and concepts</i>	This indicator identifies projects that include techniques and approaches that have not been applied or tested before and/or that put into practice, test, evaluate and disseminate actions, methodologies or approaches that are new when compared to the state of the art at

	Member State level.
<i>Frequency</i>	Annual
<i>Public availability</i>	The Programme statement
<i>Risks & limits in the use and interpretation of the data</i>	Values for this indicator are based on mandatory reporting assessed by experts at the time of submission of the proposal and then updated during project implementation
<i>Baseline setting method</i>	Taking into account that this is an indicator of the outputs of the programme 2021-2027, the baseline is set a 0 with the start-up of the programme.
<i>Target setting method</i>	The target is based on historical trends and projections on the average size and the estimated budget allocations for similar projects. Taking into account the bottom-up approach of the programme, it is purely indicative. The actual output will depend on the budget actually allocated and, on the demand, (size and scope) of the projects retained for funding after the evaluation process.
<i>Milestone setting method</i>	The milestones are based on historical trends and projections on the average size and the estimated budget allocations for similar projects. Taking into account the bottom-up approach of the programme, they are purely indicative. The actual outputs will depend on the budget actually allocated and, on the demand, (size and scope) of the projects retained for funding after the evaluation process.

Projects, including strategic integrated projects, implementing key plans and strategies

<i>Objective</i>	<p>Develop, demonstrate and promote innovative techniques, methods and approaches for reaching the objectives of the Union legislation and policy on environment, and on climate action, including the transition to renewable energy and increased energy efficiency, and to contribute to the knowledge base and to the application of best practice, in particular in relation to nature and biodiversity, including through the support of the Natura 2000 network;</p> <p>Contribute to support the development, implementation, monitoring and enforcement of the Union legislation and policy on environment and climate action and to improve governance, including by improving governance at all levels, in particular through enhancing capacities of public and private actors and the involvement of civil society;</p> <p>Play a catalytic role in the replication and the triggering of large-scale deployment of successful technical and policy-related solutions</p>
<i>Type of indicator</i>	Output
<i>Unit of measurement</i>	Number of projects
<i>Data source</i>	LIFE project database / Egrants
<i>Link to the objective</i>	Link to Specific Objectives 1 “Contribute to the shift toward a clean, circular, energy efficient, low-carbon and climate resilient economy”, 3 “Contribute to support the development, implementation, monitoring and enforcement of the Union legislation and policy on environment and climate action and to improve governance, including by improving governance at all levels, in particular through enhancing capacities of public and private actors and the involvement of civil society” and 4 “Play a catalytic role in the replication and the triggering of large-scale deployment of successful technical and policy-related solutions”
<i>Link MFF 14-20 / MFF 21-27</i>	It was not included in the indicators reported in previous programme statements. Data on this indicator in the period 2014-2020 are available.
<i>Other methodological comments</i>	Taking into account the project life cycle and the delays in the start-up of the programme implementation, data will be available starting from 2024. Milestones and targets are based on historical trends and projections on the average size and the estimated budget allocations for these projects. The actual outputs will depend on these variables and on the scope of projects retained for funding after the evaluation process

<i>Ind. brief definition</i>	Number of LIFE 2021-2027 projects that are implementing key plans and strategies
<i>Underlying definition and concepts</i>	Strategic integrated projects are projects that implement, on a regional, multi-regional, national or transnational scale, environmental or climate strategies or action plans developed by Member States' authorities and required by specific environmental, climate or relevant energy legislation or policy of the Union, while ensuring that stakeholders are involved and promoting coordination with and mobilisation of at least one other Union, national or private funding source.
<i>Frequency</i>	Annual
<i>Public availability</i>	The Programme Statement
<i>Risks & limits in the use and interpretation of the data</i>	Values for this indicator are based on mandatory reporting assessed by experts at the time of submission of the proposal and then up dated during project implementation
<i>Baseline setting method</i>	Taking into account that this is an indicator on the outputs of the programme 2021-2027, the baseline is set a 0 with the start-up of the programme.
<i>Target setting method</i>	The target is based on historical trends and projections on the average size and the estimated budget allocations for similar projects. Taking into account the bottom-up approach of the programme, it is purely indicative. The actual output will depend on the budget actually allocated and, on the demand, (size and scope) of the projects retained for funding after the evaluation process.
<i>Milestone setting method</i>	The milestones are based on historical trends and projections on the average size and the estimated budget allocations for similar projects. Taking into account the bottom-up approach of the programme, they are purely indicative. The actual outputs will depend on the budget actually allocated and, on the demand, (size and scope) of the projects retained for funding after the evaluation process.

Projects that are developing, demonstrating and promoting innovative techniques and approaches and applying best practices for nature and biodiversity

<i>Objective</i>	<p>Develop, demonstrate and promote innovative techniques and approaches and apply best practice in relation to nature and biodiversity</p> <p>Contribute to support the development, implementation, monitoring and enforcement of the Union legislation and policy on environment and climate action and to improve governance, including by improving governance at all levels, in particular through enhancing capacities of public and private actors and the involvement of civil society;</p>
<i>Type of indicator</i>	Output
<i>Unit of measurement</i>	Number of projects
<i>Data source</i>	LIFE project database / Egrants
<i>Link to the objective</i>	Link to the Specific Objective 2: Develop, demonstrate and promote innovative technique and approaches and apply best practices in relation to nature and biodiversity” and in particular to “develop, demonstrate and promote innovative techniques, methods and approaches for reaching the objectives of the Union legislation and policy on environment, including nature and biodiversity, and to contribute to the knowledge base and to the application of best practice, in particular in relation to nature and biodiversity, including through the support of the Natura 2000 network"
<i>Link MFF 14-20 / MFF 21-27</i>	It was not included in the indicators reported in previous programme statements. Data on this indicator in the period 2014-2020 are available.
<i>Other methodological comments</i>	<p>Taking into account the project life cycle and the delays in the start-up of the programme implementation, data will be available starting from 2024. Data are cumulative.</p> <p>Milestones and targets are based on historical trends and projections on the average size and the estimated budget allocations for these projects. The actual outputs will depend on these variables and on the scope of projects retained for funding after the evaluation process.</p>
<i>Ind. brief definition</i>	Number of projects that are developing, demonstrating and promoting innovative techniques and approaches and applying best practice in relation to nature and biodiversity
<i>Underlying definition and concepts</i>	This indicator identifies projects that include techniques and approached that have not been applied or tested before and/or that put into practice, test, evaluate and disseminate actions, methodologies or approaches that are new when compared to the state of the art at Member State level.

<i>Frequency</i>	Annual
<i>Public availability</i>	The programme statement and LIFE sectoral publications
<i>Risks & limits in the use and interpretation of the data</i>	Values for this indicator are based on the assessment made by project coordinators on anticipated project results at the time of submission of the proposal and then updated during project implementation. Evaluation experts, monitors and project officers check the assessments.
<i>Baseline setting method</i>	Taking into account that this is an indicator of the outputs of the programme 2021-2027, the baseline is set a 0 with the start-up of the programme.
<i>Target setting method</i>	The target is based on historical trends and projections on the average size and the estimated budget allocations for similar projects. Taking into account the bottom-up approach of the programme, it is purely indicative. The actual output will depend on the budget actually allocated and, on the demand, (size and scope) of the projects retained for funding after the evaluation process.
<i>Milestone setting method</i>	The milestones are based on historical trends and projections on the average size and the estimated budget allocations for similar projects. Taking into account the bottom-up approach of the programme, they are purely indicative. The actual outputs will depend on the budget actually allocated and, on the demand, (size and scope) of the projects retained for funding after the evaluation process.

Projects, including strategic nature projects, implementing plan, strategies or programmes of action for mainstreaming nature and biodiversity

<i>Objective</i>	<p>Develop, demonstrate and promote innovative techniques and approaches and apply best practice in relation to nature and biodiversity</p> <p>Contribute to support the development, implementation, monitoring and enforcement of the Union legislation and policy on environment and climate action and to improve governance, including by improving governance at all levels, in particular through enhancing capacities of public and private actors and the involvement of civil society;</p> <p>Play a to catalytic role in the replication and the triggering of large-scale deployment of successful technical and policy-related solutions</p>
<i>Type of indicator</i>	Output
<i>Unit of measurement</i>	Number of projects
<i>Data source</i>	LIFE project database / Egrants
<i>Link to the objective</i>	Link to the Specific Objectives 2: Develop, demonstrate and promote innovative technique and approaches and apply best practices in relation to nature and biodiversity”, 3 “Contribute to support the development, implementation, monitoring and enforcement of the Union legislation and policy on environment and climate action and to improve governance, including by improving governance at all levels, in particular through enhancing capacities of public and private actors and the involvement of civil society” and 4 “Play a to catalytic role in the replication and the triggering of large-scale deployment of successful technical and policy-related solutions”
<i>Link MFF 14-20 / MFF 21-27</i>	It was not included in the indicators reported in previous programme statements. Data on this indicator in the period 2014-2020 are available.
<i>Other methodological comments</i>	Taking into account the project life cycle and the delays in the start-up of the programme implementation, data will be available starting from 2024. Milestones and targets are based on historical trends and projections on the average size and the estimated budget allocations for these projects. The actual outputs will depend on these variables and on the scope of projects retained for funding after the evaluation process.
<i>Ind. brief definition</i>	Number of projects contributing to mainstreaming nature and biodiversity

<i>Underlying definition and concepts</i>	'Strategic nature projects ' are projects that support the achievement of Union nature and biodiversity objectives by implementing coherent programmes of action in Member States in order to mainstream those objectives and priorities into other policies and financing instruments, including through coordinated implementation of the prioritized action frameworks adopted pursuant to Directive 92/43/EEC
<i>Frequency</i>	Annual
<i>Public availability</i>	Programme statement
<i>Risks & limits in the use and interpretation of the data</i>	
<i>Baseline setting method</i>	Taking into account that this is an indicator of the outputs of the programme 2021-2027, the baseline is set a 0 with the start-up of the programme.
<i>Target setting method</i>	The target is based on historical trends and projections on the average size and the estimated budget allocations for similar projects. Taking into account the bottom-up approach of the programme, it is purely indicative. The actual output will depend on the budget actually allocated and, on the demand, (size and scope) of the projects retained for funding after the evaluation process.
<i>Milestone setting method</i>	The milestones are based on historical trends and projections on the average size and the estimated budget allocations for similar projects. Taking into account the bottom-up approach of the programme, they are purely indicative. The actual outputs will depend on the budget actually allocated and, on the demand, (size and scope) of the projects retained for funding after the evaluation process.

Projects for the development, implementation, monitoring and enforcement of Union legislation and policies on environment, climate and energy action

<i>Objective</i>	Contribute to support the development, implementation, monitoring and enforcement of the Union legislation and policy on environment and climate action and to improve governance, including by improving governance at all levels, in particular through enhancing capacities of public and private actors and the involvement of civil society;
<i>Type of indicator</i>	Output
<i>Unit of measurement</i>	Number of projects
<i>Data source</i>	LIFE project database / Egrants
<i>Link to the objective</i>	Link to specific objective 3: Contribute to putting Union legislation and policy into practice, and to improving governance, and, in particular, “to support the development, implementation, monitoring and enforcement of the relevant Union legislation and policy on environment, including nature and biodiversity, and on climate action and the transition to renewable energy or increased energy efficiency, including by improving governance at all levels, in particular through enhancing capacities of public and private actors and the involvement of civil society”.
<i>Link MFF 14-20 / MFF 21-27</i>	It was not included in the indicators reported in previous programme statements. Data on this indicator in the period 2014-2020 are available.
<i>Other methodological comments</i>	Taking into account the project life cycle and the delays in the start-up of the programme implementation, data will be available starting from 2024. Data are cumulative. Milestones and targets are based on historical trends and projections on the average size and the estimated budget allocations for these projects. The actual outputs will depend on these variables and on the scope of projects retained for funding after the evaluation process.
<i>Ind. brief definition</i>	Number of LIFE projects which contribute to the development, implementation, monitoring or enforcement of the relevant Union legislation and policies
<i>Underlying definition and concepts</i>	The indicator will include a broad range of projects aimed at supporting EU environmental and climate action and policy to achieve the objectives set out in the LIFE Regulation, including: <ol style="list-style-type: none"> 1. To halt and reverse biodiversity loss and to tackle the degradation of ecosystems 2. To contribute to the shift towards a sustainable, circular economy. 3. To transition towards an energy-efficient, renewable energy-based, climate-neutral and -resilient economy

	<p>4. To mitigate against the impacts of climate change and contribute towards EU climate adaptation policy.</p> <p>The Commission Communication on the Environmental Implementation Review (2017) and related on-going work indicate that significant progress is required to integrate climate objectives into other policies. The number of projects implemented will provide an indication as to the level of support of LIFE for the EU policy and legislative objectives, as well as highlight the areas which are being addressed by a limited number of projects.</p>
<i>Frequency</i>	Annual.
<i>Public availability</i>	The Programme Statement
<i>Risks & limits in the use and interpretation of the data</i>	Values for this indicator are based on the assessment made at the time of submission of the proposal and then updated during project implementation. Evaluation experts, monitors and project officers check the assessments.
<i>Baseline setting method</i>	Taking into account that this is an indicator of the outputs of the programme 2021-2027, the baseline is set a 0 with the start-up of the programme.
<i>Target setting method</i>	The target is based on historical trends and projections on the average size and the estimated budget allocations for similar projects. Taking into account the bottom-up approach of the programme, it is purely indicative. The actual output will depend on the budget actually allocated and, on the demand, (size and scope) of the projects retained for funding after the evaluation process.
<i>Milestone setting method</i>	The milestones are based on historical trends and projections on the average size and the estimated budget allocations for similar projects. Taking into account the bottom-up approach of the programme, they are purely indicative. The actual outputs will depend on the budget actually allocated and, on the demand, (size and scope) of the projects retained for funding after the evaluation process.

Population benefitting from an improvement in air quality

<i>Objective</i>	Develop, demonstrate and promote innovative techniques, methods and approaches for reaching the objectives of the Union legislation and policy on environment and on climate action, including the transition to renewable energy and increased energy efficiency, and to contribute to the knowledge base and to the application of best practice, in particular in relation to nature and biodiversity, including through the support of the Natura 2000 network
<i>Type of indicator</i>	Impact
<i>Unit of measurement</i>	Number of individuals
<i>Data source</i>	LIFE Key performance indicator database / Egrants
<i>Link to the objective</i>	Link to Specific Objective 1: Contribute to the shift toward a clean, circular, energy efficient, low-carbon and climate resilient economy and in particular "Develop, demonstrate and promote innovative techniques, methods and approaches for reaching the objectives of the Union legislation and policy on environment and on climate action, including the transition to renewable energy and increased energy efficiency, and to contribute to the knowledge base"
<i>Link MFF 14-20 / MFF 21-27</i>	This indicator was included at the end of the 2014-2020 period. Few data are available. Projections are based on a combination of former indicators.
<i>Other methodological comments</i>	Taking into account the project life cycle and the delays in the start-up of the programme implementation, data will be available starting from 2024. Data are cumulative. Milestones and targets are based on past project performance, number and size of selected projects and number/ambition of the proposals. The actual impact in 2024-2030 will depend on these variables and on the intervention area of projects retained for funding after the evaluation process.
<i>Ind. brief definition</i>	Population benefitting from an improvement in air quality triggered by LIFE projects
<i>Underlying definition and concepts</i>	Number of individuals that are expected to benefit or are benefitting from the reduction of CO, NH ₃ , NO _x , SO _x , or PM triggered by LIFE projects
<i>Frequency</i>	Annual. Reporting is updated annually at programme level to reflect the annual cycle of grants awarded to new projects and the possible adjustments of the project-level results during implementation.
<i>Public availability</i>	The Programme Statement. Periodic sectoral publication upon LIFE project results.

<i>Risks & limits in the use and interpretation of the data</i>	Values for this indicator are based on the assessment of anticipated project results made by beneficiaries and checked by experts, at the time of submission of the proposal and then up-dated during project implementation. Given some projects are highly innovative, it could happen that the expected impact will not materialise.
<i>Baseline setting method</i>	The baseline is set on the basis of the results of the projects 2014-2020.
<i>Target setting method</i>	The target is based on historical trends and projections on the performance, size and budget allocations of similar 2014-2020 projects. Taking into account the bottom-up approach of the programme, the target is purely indicative. The actual impact will depend on the budget actually allocated and, on the demand, (number, size and scope) of the projects retained for funding after the evaluation process.
<i>Milestone setting method</i>	The milestones are based on historical trends and projections on the performance, size and budget allocations of similar 2014-2020 projects. Taking into account the bottom-up approach of the programme, they are purely indicative. The actual impacts will depend on the budget actually allocated and, on the demand, (number, size and scope) of the projects retained for funding after the evaluation process.

Area of land with improving soil quality

<i>Objective</i>	<p>Develop, demonstrate and promote innovative techniques, methods and approaches for reaching the objectives of the Union legislation and policy on environment, and on climate action, including the transition to renewable energy and increased energy efficiency, and to contribute to the knowledge base and to the application of best practice, in particular in relation to nature and biodiversity, including through the support of the Natura 2000 network;</p> <p>Develop, demonstrate and promote innovative techniques and approaches and apply best practice in relation to nature and biodiversity</p>
<i>Type of indicator</i>	Result
<i>Unit of measurement</i>	Hectares
<i>Data source</i>	LIFE key performance indicator database / Egrants
<i>Link to the objective</i>	<p>Link to specific objectives 1 Contribute to the shift toward a clean, circular, energy efficient, low-carbon and climate resilient economy and 2. Develop, demonstrate and promote innovative technique and approaches and apply best practices in relation to nature and biodiversity and, in particular, "to develop, demonstrate and promote innovative techniques, methods and approaches for reaching the objectives of the Union legislation and policy on environment, including nature and biodiversity, and on climate action, including the transition to renewable energy and increased energy efficiency, and to contribute to the knowledge base and to the application of best practice, in particular in relation to nature and biodiversity, including through the support of the Natura 2000 network"</p>
<i>Link MFF 14-20 / MFF 21-27</i>	It was not included in the indicators reported in previous programme statements. Partial data on this indicator in the period 2014-2020 are available.
<i>Other methodological comments</i>	<p>Taking into account the project life cycle and the delays in the start-up of the programme implementation, data on anticipated project results will be available starting from 2024. Values are cumulative. Milestones and targets are based on past project performance, number and size of selected projects and number/ambition of the proposals. The actual results will depend on these variables and on the intervention area of projects retained for funding after the evaluation process.</p>
<i>Ind. brief definition</i>	Soil areas which quality is being increased as a result of LIFE projects

<i>Underlying definition and concepts</i>	This indicator refers to area of land where LIFE projects are addressing threats/ pressures to improve soil quality and/or to stop or reverse degradation. Degraded land is where there has been the long-term loss of ecosystem function and services caused by disturbances from which the system cannot recover unaided.
<i>Frequency</i>	Annual. Reporting is updated annually at programme level to reflect the annual cycle of grants awarded to new projects and the possible adjustments of the project-level results during implementation.
<i>Public availability</i>	The Programme Statement and sectoral LIFE publication
<i>Risks & limits in the use and interpretation of the data</i>	Values for this indicator are based on the assessment of anticipated project results made by beneficiaries and checked by experts, at the time of submission of the proposal and then updated during project implementation. Given some projects are highly innovative, it could happen that the expected results will not materialise.
<i>Baseline setting method</i>	The baseline is set on the basis of the results of the projects 2014-2020.
<i>Target setting method</i>	The target is based on historical trends and projections on the performance, size and budget allocations of similar 2014-2020 projects. Taking into account the bottom-up approach of the programme, the target is purely indicative. The actual results will depend on the budget actually allocated and, on the demand, (number, size and scope) of the projects retained for funding after the evaluation process.
<i>Milestone setting method</i>	The milestones are based on historical trends and projections on the performance, size and budget allocations of similar 2014-2020 projects. Taking into account the bottom-up approach of the programme, they are purely indicative. The actual results will depend on the budget actually allocated and, on the demand, (number, size and scope) of the projects retained for funding after the evaluation process.

Water bodies with improving ecological status

<i>Objective</i>	Develop, demonstrate and promote innovative techniques, methods and approaches for reaching the objectives of the Union legislation and policy on environment, and on climate action, including the transition to renewable energy and increased energy efficiency, and to contribute to the knowledge base and to the application of best practice, in particular in relation to nature and biodiversity, including through the support of the Natura 2000 network; Develop, demonstrate and promote innovative techniques and approaches and apply best practice in relation to nature and biodiversity
<i>Type of indicator</i>	Result
<i>Unit of measurement</i>	Squared Kilometre
<i>Data source</i>	LIFE key performance indicator database / Egrants
<i>Link to the objective</i>	Link to specific objectives 1 Contribute to the shift toward a clean, circular, energy efficient, low-carbon and climate resilient economy and 2. Develop, demonstrate and promote innovative technique and approaches and apply best practices in relation to nature and biodiversity and, in particular, "to develop, demonstrate and promote innovative techniques, methods and approaches for reaching the objectives of the Union legislation and policy on environment, including nature and biodiversity, and on climate action, including the transition to renewable energy and increased energy efficiency, and to contribute to the knowledge base and to the application of best practice, in particular in relation to nature and biodiversity, including through the support of the Natura 2000 network"
<i>Link MFF 14-20 / MFF 21-27</i>	It was not included in the indicators reported in previous programme statements. However, data on this indicator in the period 2014-2020 are available.
<i>Other methodological comments</i>	Taking into account the project life cycle and the delays in the start-up of the programme implementation, data will be available starting from 2024. Data are cumulative. This indicator does not catch the overall number of results triggered by LIFE project on the improvement of water quality. It does not include the results of projects expressed in square kilometres. Milestones and targets are based on past project performance, number and size of selected projects and number/ambition of the proposals. The actual results will depend on these variables and on the intervention area of projects retained for funding after the evaluation process.
<i>Ind. brief definition</i>	Length of surface water bodies and groundwater bodies which status is improving triggered by LIFE projects
<i>Underlying definition and concepts</i>	In the Water Framework Directive, surface water bodies (SWB) are a discrete and significant element of surface water such as a lake, a reservoir, a stream, river or canal, part of a stream, river or canal, a transitional water or stretch of coastal water. Groundwater bodies (GB) are a distinct volume of groundwater (i.e. water below the surface of the ground in the saturation zone) within an aquifer or

	<p>aquifers.</p> <p>The ecological status is the indicator used to assess the quality of the structure and functioning of water ecosystems. Ecological status is influenced by water quality (e.g., pollution) and habitat degradation, and is used as a proxy for the overall status of water bodies.</p>
<i>Frequency</i>	Annual. Reporting is updated annually at programme level to reflect the annual cycle of grants awarded to new projects and the possible adjustments of the project-level results during implementation.
<i>Public availability</i>	The Programme Statement and LIFE sectoral publications.
<i>Risks & limits in the use and interpretation of the data</i>	Values for this indicator are based on the assessment of anticipated project results made by beneficiaries and checked by experts, at the time of submission of the proposal and then up-dated during project implementation. Given some projects are highly innovative, it could happen that the expected results will not materialise.
<i>Baseline setting method</i>	The baseline is set on the basis of the results of the projects 2014-2020.
<i>Target setting method</i>	The target is based on historical trends and projections on the performance, size and budget allocations of similar 2014-2020 projects. Taking into account the bottom-up approach of the programme, the target is purely indicative. Actual result will depend on the budget actually allocated and, on the demand, (number, size and scope) of the projects retained for funding after the evaluation process.
<i>Milestone setting method</i>	The milestones are based on historical trends and projections on the performance, size and budget allocations of similar 2014-2020 projects. Taking into account the bottom-up approach of the programme, they are purely indicative. The actual results will depend on the budget actually allocated and, on the demand, (number, size and scope) of the projects retained for funding after the evaluation process.

Water management with increasing efficiency

<i>Objective</i>	Develop, demonstrate and promote innovative techniques, methods and approaches for reaching the objectives of the Union legislation and policy on environment, and on climate action, including the transition to renewable energy and increased energy efficiency, and to contribute to the knowledge base and to the application of best practice, in particular in relation to nature and biodiversity, including through the support of the Natura 2000 network;
<i>Type of indicator</i>	Result
<i>Unit of measurement</i>	Cubic meters/year
<i>Data source</i>	LIFE Key Performance Indicator database /Egrants
<i>Link to the objective</i>	Link to Specific Objective 1: Contribute to the shift toward a clean, circular, energy efficient, low-carbon and climate resilient economy and in particular "Develop, demonstrate and promote innovative techniques, methods and approaches for reaching the objectives of the Union legislation and policy on environment and on climate action, including the transition to renewable energy and increased energy efficiency, and to contribute to the knowledge base"
<i>Link MFF 14-20 / MFF 21-27</i>	It was not included in the indicators reported in previous programme statements. However, data on this indicator in the period 2014-2020 are available.
<i>Other methodological comments</i>	This indicator measures the volume of water which management efficiency is improving due to increased water reuse and avoided water loss. Taking into account the project life cycle and the delays in the start-up of the programme implementation, data will be available starting from 2024. Data are cumulative. Milestones and targets are based on past project performance, number and size of selected projects and number/ambition of the proposals. The actual results in 2024-2030 will depend on these variables and on the intervention area of projects retained for funding after the evaluation process.
<i>Ind. brief definition</i>	Volume of water which efficiency is improving through increased water reuse and avoided water loss
<i>Underlying definition and concepts</i>	Water reuse is defined as "the use of water which is generated from wastewater and that achieves, after treatment, a quality that is appropriate for its intended use."(Guidelines on Integrating Water Reuse into Water Planning and Management in the context of the WFD, 2016). The indicator will monitor the anticipated increase in water treated for reuse, with anticipated results reported upon the completion of the necessary treatment. Distinction with respect to water type or quality of water will, therefore, not be required. Water loss is defined as the difference between water produced and water consumed (WHO) and typically occurs across distributional systems, for instance in the form of leakages.

<i>Frequency</i>		Annual. Reporting is updated annually at programme level to reflect the annual cycle of grants awarded to new projects and the possible adjustments of the project-level results during implementation.
<i>Public availability</i>		The Programme Statement and LIFE sectoral publications
<i>Risks & limits in the use and interpretation of the data</i>		Values for this indicator are based on the assessment of anticipated project results made by beneficiaries and checked by experts, at the time of submission of the proposal and then up-dated during project implementation. Given some projects are highly innovative, it could happen that the expected results will not materialise.
<i>Baseline method</i>	<i>setting</i>	The baseline is set on the basis of the results of the projects 2014-2020.
<i>Target method</i>	<i>setting</i>	The target is based on historical trends and projections on the performance, size and budget allocations of similar 2014-2020 projects. Taking into account the bottom-up approach of the programme, the target is purely indicative. The actual output will depend on the budget actually allocated and, on the demand, (number, size and scope) of the projects retained for funding after the evaluation process.
<i>Milestone method</i>	<i>setting</i>	The milestones are based on historical trends and projections on the performance, size and budget allocations of similar 2014-2020 projects. Taking into account the bottom-up approach of the programme, they are purely indicative. The actual outputs will depend on the budget actually allocated and, on the demand, (number, size and scope) of the projects retained for funding after the evaluation process.

Waste which management is improving

<i>Objective</i>	Develop, demonstrate and promote innovative techniques, methods and approaches for reaching the objectives of the Union legislation and policy on environment, and on climate action, including the transition to renewable energy and increased energy efficiency, and to contribute to the knowledge base and to the application of best practice, in particular in relation to nature and biodiversity, including through the support of the Natura 2000 network;
<i>Type of indicator</i>	Result
<i>Unit of measurement</i>	Tonnes per year
<i>Data source</i>	LIFE key performance indicator database / Egrants
<i>Link to the objective</i>	Link to Specific Objective 1: Contribute to the shift toward a clean, circular, energy efficient, low-carbon and climate resilient economy and in particular "Develop, demonstrate and promote innovative techniques, methods and approaches for reaching the objectives of the Union legislation and policy on environment and on climate action, including the transition to renewable energy and increased energy efficiency, and to contribute to the knowledge base"
<i>Link MFF 14-20 / MFF 21-27</i>	It was not included in the indicators reported in previous programme statements. This indicator was introduced during 2014-2020. Partial data on this indicator in the period 2014-2020 are available.
<i>Other methodological comments</i>	<p>Taking into account the project life cycle and the delays in the start-up of the programme implementation, data will be available starting from 2024. Data are cumulative.</p> <p>Milestones and targets are based on past project performance, number and size of selected projects and number/ambition of the proposals. The actual results in 2024-2030 will depend on these variables and on the intervention area of projects retained for funding after the evaluation process.</p>
<i>Ind. brief definition</i>	Total amount of waste/material/product (in tonnes per year) where LIFE projects trigger improved waste management within, between and across all levels of the waste hierarchy.
<i>Underlying definition and concepts</i>	<p>The indicator encompasses improved waste/material/product management within, between and across all levels of the waste hierarchy identified in the EU Waste Framework Directive (WFD) from prevention, to preparing for re-use, recycling, recovery or disposal.</p> <p>Improved waste management practices, in line with the waste hierarchy, include practices which reduce the amount of residual waste and improve waste disposal.</p>

	Residual waste includes any discarded material, resulting from industrial activities, including from treatment of waste. Residual waste can be reduced by re-using, recycling, composting and recovering materials and substances and by improving manufacturing methods. Waste ‘disposal’ is defined by the WFD as “any operation which is not recovery even where the operation has as a secondary consequence the reclamation of substances or energy.”
<i>Frequency</i>	Annual. Reporting is updated annually at programme level to reflect the annual cycle of grants awarded to new projects and the possible adjustments of the project-level results during implementation.
<i>Public availability</i>	The Programme Statement and LIFE sectoral publications
<i>Risks & limits in the use and interpretation of the data</i>	Values for this indicator are based on the assessment of anticipated project results made by beneficiaries and checked by experts, at the time of submission of the proposal and then up-dated during project implementation. Given some projects are highly innovative, it could happen that the expected results will not materialise.
<i>Baseline setting method</i>	The baseline is set on the basis of the results of the projects 2014-2020.
<i>Target setting method</i>	The target is based on historical trends and projections on the performance, size and budget allocations of similar 2014-2020 projects. Taking into account the bottom-up approach of the programme, the target is purely indicative. The actual results will depend on the budget actually allocated and, on the demand, (number, size and scope) of the projects retained for funding after the evaluation process.
<i>Milestone setting method</i>	The milestones are based on historical trends and projections on the performance, size and budget allocations of similar 2014-2020 projects. Taking into account the bottom-up approach of the programme, they are purely indicative. The actual results will depend on the budget actually allocated and, on the demand, (number, size and scope) of the projects retained for funding after the evaluation process.

Reduction in the production and use of dangerous chemicals

<i>Objective</i>	Develop, demonstrate and promote innovative techniques, methods and approaches for reaching the objectives of the Union legislation and policy on environment, and on climate action, including the transition to renewable energy and increased energy efficiency, and to contribute to the knowledge base and to the application of best practice, in particular in relation to nature and biodiversity, including through the support of the Natura 2000 network;
<i>Type of indicator</i>	Result
<i>Unit of measurement</i>	Kilogram per year
<i>Data source</i>	LIFE key performance indicator database / Egrants
<i>Link to the objective</i>	Link to Specific Objective 1: Contribute to the shift toward a clean, circular, energy efficient, low-carbon and climate resilient economy and in particular "Develop, demonstrate and promote innovative techniques, methods and approaches for reaching the objectives of the Union legislation and policy on environment and on climate action, including the transition to renewable energy and increased energy efficiency, and to contribute to the knowledge base"
<i>Link MFF 14-20 / MFF 21-27</i>	This is a new indicator. For the 2014-2020 programming period, the LIFE KPI monitored the reduction/ substitution of dangerous substances. Substances were previously reported by EC list number and grouped by different categories.
<i>Other methodological comments</i>	<p>The indicator catches the reduction of chemicals substances dangerous for human health and/or for the environment</p> <p>Taking into account the project life cycle and the delays in the start-up of the programme implementation, data will be available starting from 2024. Data are cumulative.</p> <p>Milestones and targets are based on past project performance, number and size of selected projects and number/ambition of the proposals.</p> <p>The actual results in 2024-2030 will depend on these variables and on the intervention area of projects retained for funding after the evaluation process.</p>
<i>Ind. brief definition</i>	<p>Reductions triggered by LIFE projects of EU import and manufacture of substances classified as</p> <p>(1) chemicals dangerous for human health (e.g. carcinogenic, mutagenic, reprotoxic (CMR) category 1A/1B under the CLP Regulation)</p> <p>(2) chemicals dangerous for the environment (e.g. persistent, bioaccumulative and toxic (PBT), very persistent and very bioaccumulative (vPvB) - chemicals dangerous for the environment - under the REACH Regulation)</p>

<i>Underlying definition and concepts</i>	<p>Substances classified CMR (1A and 1B) are substances of very high concerns for humans as they may cause cancer, genetic defects or damage fertility or unborn child.</p> <p>Persistent, bioaccumulative and toxic (PBT), and very persistent and very bioaccumulative (vPvB) substances are substances of very high concern for the environment because of their persistence, their ability to accumulate in living organisms, their capacity of travelling long distances and mainly their high toxicity.</p>
<i>Frequency</i>	Annual. Reporting is updated annually at programme level to reflect the annual cycle of grants awarded to new projects and the possible adjustments of the project-level results during implementation.
<i>Public availability</i>	The Programme Statement or LIFE sectoral publications
<i>Risks & limits in the use and interpretation of the data</i>	Values for this indicator are based on the assessment of anticipated project results made by beneficiaries and checked by experts, at the time of submission of the proposal and then updated during project implementation. Given some projects are highly innovative, it could happen that the expected results will not materialise.
<i>Baseline setting method</i>	The baseline is set on the basis of the results of the projects 2014-2020.
<i>Target setting method</i>	The target is based on historical trends and projections on the performance, size and budget allocations of similar 2014-2020 projects. Taking into account the bottom-up approach of the programme, the target is purely indicative. Actual results will depend on the budget actually allocated and, on the demand, (number, size and scope) of the projects retained for funding after the evaluation process.
<i>Milestone setting method</i>	The milestones are based on historical trends and projections on the performance, size and budget allocations of similar 2014-2020 projects. Taking into account the bottom-up approach of the programme, they are purely indicative. The actual results will depend on the budget actually allocated and, on the demand, (number, size and scope) of the projects retained for funding after the evaluation process.

Population benefitting from a reduction in noise pollution

<i>Objective</i>	Develop, demonstrate and promote innovative techniques, methods and approaches for reaching the objectives of the Union legislation and policy on environment, and on climate action, including the transition to renewable energy and increased energy efficiency, and to contribute to the knowledge base and to the application of best practice, in particular in relation to nature and biodiversity, including through the support of the Natura 2000 network;
<i>Type of indicator</i>	Impact
<i>Unit of measurement</i>	Number of individuals
<i>Data source</i>	LIFE key performance indicator database / Egrants
<i>Link to the objective</i>	Link to Specific Objective 1: Contribute to the shift toward a clean, circular, energy efficient, low-carbon and climate resilient economy and in particular "Develop, demonstrate and promote innovative techniques, methods and approaches for reaching the objectives of the Union legislation and policy on environment and on climate action, including the transition to renewable energy and increased energy efficiency, and to contribute to the knowledge base"
<i>Link MFF 14-20 / MFF 21-27</i>	This indicator was included in the period 2014-2020. Few projects covered noise pollution of in the years 2014-2020. Projections are based on a combination of former indicators.
<i>Other methodological comments</i>	Taking into account the project life cycle and the delays in the start-up of the programme implementation, data will be available starting from 2024. Data are cumulative. Milestones and targets are based on past project performance, number and size of selected projects and number/ambition of the proposals. The actual impact in 2024-2030 will depend on these variables and on the intervention area of projects retained for funding after the evaluation process.
<i>Ind. brief definition</i>	Number of people living in areas with reducing noise pollution triggered by LIFE projects
<i>Underlying definition and concepts</i>	Noise pollution is defined by the EU Environmental Noise Directive (2002/49/EC) as "unwanted or harmful outdoor sound created by human activities, including noise emitted by means of transport, road traffic, rail traffic, air traffic and from sites of industrial activity."
<i>Frequency</i>	Annual. Reporting is updated annually at programme level to reflect the annual cycle of grants awarded to new projects and the possible adjustments of the project-level results during implementation.

<i>Public availability</i>	The Programme Statement and LIFE sectoral publications
<i>Risks & limits in the use and interpretation of the data</i>	Values for this indicator are based on the assessment of anticipated project results made by beneficiaries and checked by experts, at the time of submission of the proposal and then up dated during project implementation. Given some projects are highly innovative, it could happen that the expected impact will not materialise.
<i>Baseline setting method</i>	The baseline is set on the basis of the results of the projects 2014-2020.
<i>Target setting method</i>	The target is based on historical trends and projections on the performance, size and budget allocations of similar 2014-2020 projects. Taking into account the bottom-up approach of the programme, the target is purely indicative. The actual impact will depend on the budget actually allocated and, on the demand, (number, size and scope) of the projects retained for funding after the evaluation process.
<i>Milestone setting method</i>	The milestones are based on historical trends and projections on the performance, size and budget allocations of similar 2014-2020 projects. Taking into account the bottom-up approach of the programme, they are purely indicative. The actual impacts will depend on the budget actually allocated and on the demand (number, size and scope) of the projects retained for funding after the evaluation process.

Reduction of Greenhouse Gas Emissions

<i>Objective</i>	Develop, demonstrate and promote innovative techniques, methods and approaches for reaching the objectives of the Union legislation and policy on environment, and on climate action, including the transition to renewable energy and increased energy efficiency, and to contribute to the knowledge base and to the application of best practice, in particular in relation to nature and biodiversity, including through the support of the Natura 2000 network;
<i>Type of indicator</i>	Result
<i>Unit of measurement</i>	Tonnes of CO2 equivalent per year (CO2e/year).
<i>Data source</i>	LIFE key performance indicator database / Egrants
<i>Link to the objective</i>	Link to Specific Objective 1: Contribute to the shift toward a clean, circular, energy efficient, low-carbon and climate resilient economy and in particular "Develop, demonstrate and promote innovative techniques, methods and approaches for reaching the objectives of the Union legislation and policy on environment and on climate action, including the transition to renewable energy and increased energy efficiency, and to contribute to the knowledge base"
<i>Link MFF 14-20 / MFF 21-27</i>	It was not included in the indicators reported in previous programme statements. Data on this indicator in the period 2014-2020 are available. Projections are based on a combination of former LIFE data and data from the Clean Energy Transition sub-programme on GHG reductions, as these projects will be financed under LIFE in the future
<i>Other methodological comments</i>	<p>This indicator catches the additional GHG reductions achieved by the projects.</p> <p>Taking into account the project life cycle and the delays in the start-up of the programme implementation, data will be available starting from 2024. Data are cumulative.</p> <p>Milestones and targets are based on historical trends and projections on the average size and the estimated budget allocations for these projects. The actual result will depend on these variables and on the intervention area of projects retained for funding after the evaluation process.</p>
<i>Ind. brief definition</i>	Amount of greenhouse gas emissions being reduced

<i>Underlying definition and concepts</i>	<p>For the majority of LIFE Climate projects and other LIFE projects reporting on reduction of emissions, the GHG emission reductions are expected to fall under the following main groups:</p> <p>a) Reduction of CO2 emissions: b) Reduction of emissions of other GHGs.</p> <p>For LIFE CET projects and some other LIFE projects, the reduction of GHG emissions is mostly an indirect result, as the projects do not finance hardware investment. The reduction is entailed by the adoption of the project results by market actors which is not in the direct scope of the project.</p>
<i>Frequency</i>	Annual. Reporting is updated annually at programme level to reflect the annual cycle of grants awarded to new projects and the possible adjustments of the project-level results during implementation.
<i>Public availability</i>	The Programme Statement and LIFE sectoral publications
<i>Risks & limits in the use and interpretation of the data</i>	Values for this indicator are based on the assessment of anticipated project results made by beneficiaries and checked by experts, at the time of submission of the proposal and then up-dated during project implementation. Given some projects are highly innovative, it could happen that the expected results will not materialise.
<i>Baseline setting method</i>	The baseline is set on the basis of the results of the projects 2014-2020.
<i>Target setting method</i>	The target is based on historical trends and projections on the performance, size and budget allocations of similar 2014-2020 projects. Taking into account the bottom-up approach of the programme, the target is purely indicative. The actual results will depend on the budget actually allocated and, on the demand, (number, size and scope) of the projects retained for funding after the evaluation process.
<i>Milestone setting method</i>	The milestones are based on historical trends and projections on the performance, size and budget allocations of similar 2014-2020 projects. Taking into account the bottom-up approach of the programme, they are purely indicative. The actual results will depend on the budget actually allocated and, on the demand, (number, size and scope) of the projects retained for funding after the evaluation process.

Population benefitting from a reduction of their vulnerability to the adverse effects of climate change

<i>Objective</i>	Develop, demonstrate and promote innovative techniques, methods and approaches for reaching the objectives of the Union legislation and policy on environment, and on climate action, including the transition to renewable energy and increased energy efficiency, and to contribute to the knowledge base and to the application of best practice, in particular in relation to nature and biodiversity, including through the support of the Natura 2000 network;
<i>Type of indicator</i>	Impact
<i>Unit of measurement</i>	Number of individuals
<i>Data source</i>	LIFE key performance indicator database / Egrants
<i>Link to the objective</i>	Link to Specific Objective 1: Contribute to the shift toward a clean, circular, energy efficient, low-carbon and climate resilient economy and in particular "Develop, demonstrate and promote innovative techniques, methods and approaches for reaching the objectives of the Union legislation and policy on environment and on climate action, including the transition to renewable energy and increased energy efficiency, and to contribute to the knowledge base"
<i>Link MFF 14-20 / MFF 21-27</i>	This is a new indicator introduced for the 2021-2027 programming period that cannot be compared with the previous one (2014-2020). Data on few projects are available for 2014-2020. Projections are based on a combination of former indicators.
<i>Other methodological comments</i>	Taking into account the project life cycle and the delays in the start-up of the programme implementation, data will be available starting from 2024. Data are cumulative. Milestones and targets are based on past project performance, number and size of selected projects and number/ambition of the proposals. The actual impact in 2024-2030 will depend on these variables and on the intervention area of projects retained for funding after the evaluation process.
<i>Ind. brief definition</i>	Reduction in the number of people which vulnerability to the adverse effects of climate change is reduced as a result of LIFE projects that are reducing their climate sensitivities and increasing their adaptive capacities.
<i>Underlying definition and concepts</i>	IPCC's definition of vulnerability is "The propensity or predisposition to be adversely affected. Vulnerability encompasses... sensitivity or susceptibility to harm and lack of capacity to cope and adapt." It defines climate sensitivity as "The degree to which a system or species is affected, adversely or beneficially, directly or indirectly, by climate variability or change" and adaptive capacity as "The ability of

	<p>systems, institutions, humans, and other organisms to adjust to potential damage, take advantage of opportunities, or respond to consequences”.</p> <p>Climate sensitivity refers to the degree to which a system, community or sector will respond to a climate-related hazard. Adaptive capacity is a function of available financial recourses, human resources and adaptation options, and will differ between vulnerabilities and sectors.</p>
<i>Frequency</i>	Annual. Reporting is updated annually at programme level to reflect the annual cycle of grants awarded to new projects and the possible adjustments of the project-level results during implementation.
<i>Public availability</i>	The Programme Statement and LIFE sectoral publications
<i>Risks & limits in the use and interpretation of the data</i>	Values for this indicator are based on the assessment of anticipated project results made by beneficiaries and checked by experts, at the time of submission of the proposal and then updated during project implementation. Given some projects are highly innovative, it could happen that the expected impact will not materialise.
<i>Baseline setting method</i>	The baseline is set on the basis of the results of the projects 2014-2020.
<i>Target setting method</i>	The target is based on historical trends and projections on the performance, size and budget allocations of similar 2014-2020 projects. Taking into account the bottom-up approach of the programme, the target is purely indicative. The actual impact will depend on the budget actually allocated and, on the demand, (number, size and scope) of the projects retained for funding after the evaluation process.
<i>Milestone setting method</i>	The milestones are based on historical trends and projections on the performance, size and budget allocations of similar 2014-2020 projects. Taking into account the bottom-up approach of the programme, they are purely indicative. The actual impact will depend on the budget actually allocated and, on the demand, (number, size and scope) of the projects retained for funding after the evaluation process.

Additional annual primary energy savings

<i>Objective</i>	Develop, demonstrate and promote innovative techniques, methods and approaches for reaching the objectives of the Union legislation and policy on environment, and on climate action, including the transition to renewable energy and increased energy efficiency, and to contribute to the knowledge base and to the application of best practice, in particular in relation to nature and biodiversity, including through the support of the Natura 2000 network;
<i>Type of indicator</i>	Result
<i>Unit of measurement</i>	Gigawatt/year
<i>Data source</i>	LIFE key performance indicator database / Egrants
<i>Link to the objective</i>	Link to Specific Objective 1: Contribute to the shift toward a clean, circular, energy efficient, low-carbon and climate resilient economy and in particular "Develop, demonstrate and promote innovative techniques, methods and approaches for reaching the objectives of the Union legislation and policy on environment and on climate action, including the transition to renewable energy and increased energy efficiency, and to contribute to the knowledge base"
<i>Link MFF 14-20 / MFF 21-27</i>	This indicator was not available in this form for the LIFE Programme in the period 2014-2020. Its addition is linked to the integration of the Clean Energy Transition sub-programme.
<i>Other methodological comments</i>	<p>This indicator catches the additional annual primary energy savings triggered by the projects financed under the Clean Energy Transition sub-programme, and the additional annual primary energy savings expected by the end of the projects financed under the other LIFE sub-programmes.</p> <p>Taking into account the project life cycle and the delays in the start-up of the programme implementation, data on anticipated project results will be available starting from 2024. Milestones and targets are based on past project performance, number and size of selected projects and number/ambition of the proposals. The actual results in 2024-2030 will depend on these variables and on the intervention area of projects retained for funding after the evaluation process.</p>
<i>Ind. brief definition</i>	Additional energy savings triggered by LIFE projects and, thereby, the programme's contribution to the EU Energy efficiency targets
<i>Underlying definition and concepts</i>	<p>For many CET and Climate projects, energy savings are mostly an indirect result, as the projects do not finance hardware investment. The savings are entailed by the adoption of the project results by market actors which is not in the direct scope of the project.</p> <p>For CET projects, primary energy savings data are collected at project</p>

	<p>level.</p> <p>For other projects: annual final energy savings will be estimated as compared with historical energy consumption for a comparable project / installation, using projections of historical growth rates or by making other reasonable assumptions.</p> <p>To ensure that data can be aggregated, International Energy Agency (IEA) conversion factors will be applied at project level to each fuel type to convert from units of fuel to GWh, e.g. to convert litres of oil into GWh.</p> <p>At project level the energy savings will be converted into primary energy. This will require converting the electricity savings from final energy savings into primary energy savings. The conversion factor for electricity savings in the revised 2018 Energy Efficiency Directive (currently 2.1) will be used to convert electricity savings into primary energy savings. No conversion factor is required for final energy savings from other fuel types.</p>
<i>Frequency</i>	Annual. Reporting is updated annually at programme level to reflect the annual cycle of grants awarded to new projects and the possible adjustments of the project-level results during implementation.
<i>Public availability</i>	The Programme Statement and LIFE sectoral publication
<i>Risks & limits in the use and interpretation of the data</i>	<p>Values for this indicator are based on the assessment of anticipated project results made by beneficiaries and checked by experts, at the time of submission of the proposal and then up-dated during project implementation.</p> <p>Given some projects are highly innovative, it could happen that the expected impact will not materialise.</p>
<i>Baseline setting method</i>	The baseline is set at 0 because this indicator was not used as such to measure the results of the projects 2014-2020.
<i>Target setting method</i>	The target is based on historical trends and projections on the performance, size and budget allocations of sustainable energy projects previously financed under Horizon 2020. Taking into account the bottom-up approach of the programme, the target is purely indicative. The actual results will depend on the budget actually allocated and, on the demand, (number, size and scope) of the projects retained for funding after the evaluation process.
<i>Milestone setting method</i>	The milestones are based on historical trends and projections on the performance, size and budget allocations of sustainable energy projects previously financed under Horizon 2020. Taking into account the bottom-up approach of the programme, they are purely indicative. The actual results will depend on the budget actually allocated and, on the demand, (number, size and scope) of the projects retained for funding after the evaluation process.

Additional annual renewable energy production

<i>Objective</i>	Develop, demonstrate and promote innovative techniques, methods and approaches for reaching the objectives of the Union legislation and policy on environment, and on climate action, including the transition to renewable energy and increased energy efficiency, and to contribute to the knowledge base and to the application of best practice, in particular in relation to nature and biodiversity, including through the support of the Natura 2000 network;
<i>Type of indicator</i>	Result
<i>Unit of measurement</i>	Gigawatt/year
<i>Data source</i>	LIFE Key indicator database and Data from the Clean Energy Transition Programme
<i>Link to the objective</i>	Link to Specific Objective 1: Contribute to the shift toward a clean, circular, energy efficient, low-carbon and climate resilient economy and in particular "Develop, demonstrate and promote innovative techniques, methods and approaches for reaching the objectives of the Union legislation and policy on environment and on climate action, including the transition to renewable energy and increased energy efficiency, and to contribute to the knowledge base"
<i>Link MFF 14-20 / MFF 21-27</i>	This indicator was not available in this form for the LIFE Programme in the period 2014-2020. Its addition is linked to the integration of the Clean Energy Transition sub-programme.
<i>Other methodological comments</i>	<p>This indicator catches the additional annual renewable energy production triggered by the projects financed under the Clean Energy Transition sub-programme and the additional renewable energy production expected by the end of the projects financed under the other LIFE sub-programmes.</p> <p>Taking into account the project life cycle and the delays in the start-up of the programme implementation, data on anticipated project results will be available starting from 2024. Milestones and targets are based on past project performance, number and size of selected projects and number/ambition of the proposals. The impact in 2024-2030 will depend on these variables.</p>
<i>Ind. brief definition</i>	Additional annual primary renewable energy production and, thereby, the programme's contribution to the EU Renewable Energy target
<i>Underlying definition and concepts</i>	Consistent with the Renewable Energy Directive and the EU Clean Energy targets, the indicator will focus on renewable non-fossil sources, as defined in the Renewable Energy Directive, namely wind, solar, aerothermal, geothermal, hydrothermal and ocean energy, hydropower, biomass, landfill gas and sewage treatment plant gas and

	biogases.
<i>Frequency</i>	Annual. Reporting is updated annually at programme level to reflect the annual cycle of grants awarded to new projects and the possible adjustments of the project-level results during implementation.
<i>Public availability</i>	The Programme Statement and LIFE sectoral publications
<i>Risks & limits in the use and interpretation of the data</i>	<p>For many CET and Climate projects, the renewable energy production is mostly an indirect result, as the projects do not finance hardware investment. The production is entailed by the adoption of the project results by market actors which is not in the direct scope of the project.</p> <p>Values for this indicator are based on the assessment of anticipated project results made by beneficiaries and checked by experts, at the time of submission of the proposal and then updated during project implementation.</p> <p>Given some projects are highly innovative, it could happen that the expected impact will not materialise.</p>
<i>Baseline setting method</i>	The baseline is set at 0 because this indicator was not available as such for the projects 2014-2020.
<i>Target setting method</i>	The target is based on historical trends and projections on the performance, size and budget allocations of sustainable energy projects previously financed under Horizon 2020. Taking into account the bottom-up approach of the programme, the target is purely indicative. The actual results will depend on the budget actually allocated and, on the demand, (number, size and scope) of the projects retained for funding after the evaluation process.
<i>Milestone setting method</i>	The milestones are based on historical trends and projections on the performance, size and budget allocations of sustainable energy projects previously financed under Horizon 2020. Taking into account the bottom-up approach of the programme, the milestones are purely indicative. The actual results will depend on the budget actually allocated and, on the demand, (number, size and scope) of the projects retained for funding after the evaluation process.

Area of habitats where loss of biodiversity is being halted or reversed

<i>Objective</i>	Develop, demonstrate and promote innovative techniques and approaches and apply best practice in relation to nature and biodiversity
<i>Type of indicator</i>	Result
<i>Unit of measurement</i>	Hectares
<i>Data source</i>	LIFE Key indicator database/ Egrants
<i>Link to the objective</i>	Link to the Specific Objective 2: Develop, demonstrate and promote innovative technique and approaches and apply best practices in relation to nature and biodiversity” and in particular to “develop, demonstrate and promote innovative techniques, methods and approaches for reaching the objectives of the Union legislation and policy on environment, including nature and biodiversity, and to contribute to the knowledge base and to the application of best practice, in particular in relation to nature and biodiversity, including through the support of the Natura 2000 network"
<i>Link MFF 14-20 / MFF 21-27</i>	It was not included as such in the indicators reported in previous programme statements. Data on this indicator on the predecessor projects in the period 2014-2020 are available.
<i>Other methodological comments</i>	<p>Taking into account the project life cycle and the delays in the start-up of the programme implementation, data on anticipated project results will be available starting from 2024. This indicator does not catch the overall number of results triggered by LIFE project on the area of habitats. It does not include the results of projects expressed in length. Values are cumulative.</p> <p>Milestones and targets are based on past project performance and number and size of related projects. The actual results in 2024-2030 will depend on these variables and on the intervention area of projects retained for funding after the evaluation process.</p>
<i>Ind. brief definition</i>	Areas of habitats which conservation status is improving thanks to LIFE projects
<i>Underlying definition and concepts</i>	<p>Habitats are terrestrial or aquatic areas distinguished by geographic, abiotic and biotic features, whether entirely natural or semi-natural. Preserving and restoring protected habitats in the EU is a vital task, both for the intrinsic value of these habitats and their dependent species, and for the wide range of ecosystem services they provide (flood protection, water and air quality, pollination, recreation, etc) . The EU Biodiversity Strategy to 2030 includes the target that “at least 30% of species and habitats not currently in favourable status are in that category by 2030 or show a strong positive trend.”</p>

	The conservation status of habitats is defined in Annex I of the Habitats Directive, the most up-to-date published version of the IUCN Red Lists or, where data are not available, assessed by the project coordinators using a standard methodology based on four parameters as defined in Article 1 of the Habitats Directive.
<i>Frequency</i>	Annual
<i>Public availability</i>	The Programme Statement
<i>Risks & limits in the use and interpretation of the data</i>	Values for this indicator are based on the assessment of anticipated project results made by beneficiaries and checked by experts, at the time of submission of the proposal and then up-dated during project implementation. External factors and unexpected events - independent from the project - may influence the conservation status of the targeted habitat(s).
<i>Baseline setting method</i>	The baseline is set on the basis of the results of the projects 2014-2020.
<i>Target setting method</i>	The target is based on historical trends and projections on the performance, size and budget allocations of similar 2014-2020 projects. Taking into account the bottom-up approach of the programme, the target is purely indicative. The actual results will depend on the budget actually allocated and, on the demand, (number, size and scope) of the projects retained for funding after the evaluation process.
<i>Milestone setting method</i>	The milestones are based on historical trends and projections on the performance, size and budget allocations of similar 2014-2020 projects. Taking into account the bottom-up approach of the programme, they are purely indicative. The actual results will depend on the budget actually allocated and, on the demand, (number, size and scope) of the projects retained for funding after the evaluation process.

Species where loss is being halted or reversed

<i>Objective</i>	Develop, demonstrate and promote innovative techniques and approaches and apply best practice in relation to nature and biodiversity
<i>Type of indicator</i>	Number of species, populations
<i>Unit of measurement</i>	Impact
<i>Data source</i>	Number of species, populations
<i>Link to the objective</i>	LIFE Key performance database
<i>Link MFF 14-20 / MFF 21-27</i>	Link to the Specific Objective 2: Develop, demonstrate and promote innovative technique and approaches and apply best practices in relation to nature and biodiversity” and in particular to “develop, demonstrate and promote innovative techniques, methods and approaches for reaching the objectives of the Union legislation and policy on environment, including nature and biodiversity, and to contribute to the knowledge base and to the application of best practice, in particular in relation to nature and biodiversity, including through the support of the Natura 2000 network"
<i>Other methodological comments</i>	It was not included as such in the indicators reported in previous programme statements. However, data on this indicator for the period 2014-2020 are available. Projections are based on a combination of former indicators. Milestones and targets are based on past project performance, number and size of selected projects and number/ambition of the proposals. The impact in 2024-2030 will depend on these variables.
<i>Ind. brief definition</i>	Taking into account the project life cycle and the delays in the start-up of the programme implementation, data will be available starting from 2024. Data are cumulative.
<i>Underlying definition and concepts</i>	Number of population species which conservation status is improving as a result of LIFE projects.
<i>Frequency</i>	A population is the number of organisms of the same species that live in a particular geographic area at the same time, with the capability of interbreeding. The conservation status of a species is an indicator of whether a species still exists and how likely it is that it will become extinct in the near future. Many factors are taken into account when assessing the conservation status.

<i>Public availability</i>	Annual. Reporting is updated annually at programme level to reflect the annual cycle of grants awarded to new projects and the possible adjustments of the project-level results during implementation.
<i>Risks & limits in the use and interpretation of the data</i>	The Programme Statement and LIFE sectoral publications
<i>Baseline setting method</i>	Values for this indicator are based on the assessment of anticipated project results made by beneficiaries and checked by experts, at the time of submission of the proposal and then up dated during project implementation. External factors and unexpected events - independent from the project - may influence the conservation status of the targeted species population(s).
<i>Target setting method</i>	The baseline is set on the basis of the results of the projects 2014-2020.
<i>Milestone setting method</i>	The target is based on historical trends and projections on the performance, size and budget allocations of similar 2014-2020 projects. Taking into account the bottom-up approach of the programme, the target is purely indicative. Actual results will depend on the budget actually allocated and, on the demand, (number, size and scope) of the projects retained for funding after the evaluation process.

Organisations involved in projects or receiving operating grants

<i>Objective</i>	Contribute to support the development, implementation, monitoring and enforcement of the Union legislation and policy on environment and climate action and to improve governance, including by improving governance at all levels, in particular through enhancing capacities of public and private actors and the involvement of civil society;
<i>Type of indicator</i>	Output
<i>Unit of measurement</i>	Number of organisations
<i>Data source</i>	LIFE key performance indicator database / Egrants
<i>Link to the objective</i>	Link to specific objective 3: Contribute to putting Union legislation and policy into practice, and to improving governance, and, in particular, “to support the development, implementation, monitoring and enforcement of the relevant Union legislation and policy on environment, including nature and biodiversity, and on climate action and the transition to renewable energy or increased energy efficiency, including by improving governance at all levels, in particular through enhancing capacities of public and private actors and the involvement of civil society”.
<i>Link MFF 14-20 / MFF 21-27</i>	It was not included in the indicators reported in previous programme statements. Data on this indicator in the period 2014-2020 are available.
<i>Other methodological comments</i>	Taking into account the project life cycle and the delays in the start up of the programme implementation, data will be available starting from 2024. Data are cumulative. Milestones and targets are based on historical trends and projections on the number of projects and on the average number of beneficiaries per type of projects. The actual outputs will depend on these variables.
<i>Ind. brief definition</i>	Number of organisations benefiting from LIFE financing
<i>Underlying definition and concepts</i>	ALL project beneficiaries (te coordinators and the partners) benefit from the LIFE financing for the implementation of the project activities
<i>Frequency</i>	Annual
<i>Public availability</i>	Programme statement
<i>Risks & limits in the use and interpretation of the data</i>	

<i>Baseline setting method</i>	Taking into account that this is an indicator of the outputs of the programme 2021-2027, the baseline is set a 0 with the start-up of the programme.
<i>Target setting method</i>	The target is based on historical trends and projections on the average number of projects and the average number of partners for similar projects. Taking into account the bottom up approach of the programme, it is purely indicative. The actual output will depend on the budget actually allocated and on the demand (project size and structured partnership) of the projects retained for funding after the evaluation process.
<i>Milestone setting method</i>	The milestones are based on historical trends and projections on the average size and the number of beneficiaries per project. Taking into account the bottom up approach of the programme, they are purely indicative. The actual outputs will depend on the budget actually allocated and on the demand (project size and structured partnership) of the projects retained for funding after the evaluation process.

Projects having a catalytic effect

<i>Objective</i>	Playing a catalytic role in the replication and the triggering of large-scale deployment of successful technical and policy-related solutions
<i>Type of indicator</i>	Output
<i>Unit of measurement</i>	Number of projects
<i>Data source</i>	LIFE key indicators database / Egrants
<i>Link to the objective</i>	Link to specific objective 3: Contribute to putting Union legislation and policy into practice, and to improving governance, and, in particular, “to support the development, implementation, monitoring and enforcement of the relevant Union legislation and policy on environment, including nature and biodiversity, and on climate action and the transition to renewable energy or increased energy efficiency, including by improving governance at all levels, in particular through enhancing capacities of public and private actors and the involvement of civil society”.
<i>Link MFF 14-20 / MFF 21-27</i>	Data on this indicator are not available for the period 2014-2020
<i>Other methodological comments</i>	<p>Taking into account the project life cycle and the delays in the start up of the programme implementation, data will be available starting from 2024. Data are cumulative.</p> <p>Milestones and targets are based on historical trends and projections on the average size and the estimated budget allocations for these projects. The actual outputs will depend on these variables and on the scope of projects retained for funding after the evaluation process.</p>
<i>Ind. brief definition</i>	The number of projects that have a catalytic effect on the ground.
<i>Underlying definition and concepts</i>	<p>The number of projects that induce a deployment of successful technical and policy-related solutions, which can support the effective implementation of environmental, climate and energy policies.</p> <p>For the purpose of measuring catalytic impact of the LIFE Programme, a framework has been developed comprising five indicators each measuring a separate dimension – temporal, financial, societal, thematic, and spatial.</p>
<i>Frequency</i>	Annual
<i>Public availability</i>	The Programme Statement
<i>Risks & limits in the use and interpretation of the data</i>	LIFE project beneficiaries will be required to report on whether the anticipated trend for each of those four catalytic dimensions is “Stopped, Decreasing, Stable, Increasing, or Unknown” at an interim stage and on the actual trend for each dimension at the end of their

	projects.
<i>Baseline setting method</i>	The projects will start with the financing by the programme 2021-2027
<i>Target setting method</i>	This indicator was not available under the LIFE programme 2014-2020. The framework was defined starting in 2021. Some related figures were included in the mid-term evaluation of the programme. The target has been set defining a percentage of the projects that could have a catalytic effect.
<i>Milestone setting method</i>	This indicator was not available under the LIFE programme 2014-2020. The framework was defined starting in 2021. Some related figures were included in the mid-term evaluation of the programme. The target has been set defining a percentage of the projects that could have a catalytic effect.

Cumulative investments triggered by the projects or finance accessed

<i>Objective</i>	Playing catalytic role in the replication and the triggering of large-scale deployment of successful technical and policy-related solutions
<i>Type of indicator</i>	Result
<i>Unit of measurement</i>	Million EUR
<i>Data source</i>	LIFE key indicator database / Egrants
<i>Link to the objective</i>	Link to specific objective 4: Play a catalytic role in the replication and the triggering of large scale deployment of successful technical and policy-related solution and, in particular, “to catalyse the large-scale deployment of successful technical and policy-related solutions for implementing the relevant Union legislation and policy on environment, including nature and biodiversity, and on climate action and the transition to renewable energy or increased energy efficiency by replicating results, integrating related objectives into other policies and into public and private sector practices, mobilising investment and improving access to finance”.
<i>Link MFF 14-20 / MFF 21-27</i>	Data on this indicator are only partially available for the period 2014-2020.
<i>Other methodological comments</i>	Taking into account the project life cycle and the delays in the start-up of the programme implementation, data will be available starting from 2024. Data are cumulative. Milestones and targets are based on past project performance, number and size of selected projects and number/ambition of the proposals. The actual result will depend on these variables and on the scope of projects retained for funding after the evaluation process.
<i>Ind. brief definition</i>	Cumulative investments triggered by LIFE projects or finance accessed
<i>Underlying definition and concepts</i>	This indicator covers complementary funding that will be mobilised during the LIFE project and directed to support the objectives of the LIFE programme. It does not include complementary funding triggered by LIFE Strategic Integrated and Strategic Nature Projects. It includes the amount of the investments triggered by the LIFE projects and the technical assistance activities financed by the LIFE programme.
<i>Frequency</i>	Annual. Reporting is updated annually at programme level to reflect the annual cycle of grants awarded to new projects and the possible adjustments of the project-level results during implementation.
<i>Public availability</i>	Programme statement

<i>Risks & limits in the use and interpretation of the data</i>	<p>For many CET and Climate projects, the investments triggered are mostly an indirect result, as the projects do not finance hardware investment. The investments are entailed by the adoption of the project results by market actors which is not in the direct scope of the project.</p> <p>Values for this indicator are based on the assessment made by project coordinators on anticipated project results at the time of submission of the proposal and then updated during project implementation. Evaluation experts, monitors and project officers check the assessments.</p>
<i>Baseline setting method</i>	<p>Taking into account that this is a new indicator introduced for the programme 2021-2027, no historical data are available. The baseline is therefore set a 0.</p>
<i>Target setting method</i>	<p>The target is based on the available performance information related to sustainable energy projects, only. Taking into account the bottom-up approach of the programme, it is purely indicative. The actual output will depend on the budget actually allocated and, on the demand, (size and scope) of the projects retained for funding after the evaluation process.</p>
<i>Milestone setting method</i>	<p>The milestones are based on available performance information related to sustainable energy projects, only. Taking into account the bottom-up approach of the programme, they are purely indicative. The actual outputs will depend on the budget actually allocated and, on the demand, (size and scope) of the projects retained for funding after the evaluation process.</p>