

Bruxelles, le 11 avril 2022  
(OR. fr, en)

8129/22

MAR 88  
OMI 58  
ENV 342

## NOTE POINT "I"

---

Origine:	Secrétariat général du Conseil
Destinataire:	Comité des représentants permanents (1 <sup>re</sup> partie)
Objet:	Projet de soumission de l'Union à la 6 <sup>e</sup> réunion intersessions du Groupe d'experts de l'Organisation maritime internationale sur l'harmonisation des données, proposant une série de données OMI relative au « reçu de livraison de déchets » – Approbation

---

### I. INTRODUCTION

1. Le 15 mars 2022, la Commission a transmis au Conseil un document de travail des services de la Commission contenant un projet de soumission à la 6<sup>e</sup> session du groupe d'experts sur l'harmonisation des données (EGDH 6) de l'Organisation maritime internationale (OMI), proposant une série de données OMI relative au "réçu de livraison de déchets". Le délai pour transmettre la soumission au secrétariat de l'OMI est le 22 avril 2022.
2. La soumission propose d'inclure une série de données liées à la réception de déchets dans le modèle de données de référence de l'OMI. Elle comprend des suggestions sur un diagramme de séquence qui vise à clarifier le flux de données liées à la réception de déchets.

## **II. TRAVAIL DES INSTANCES PREPARATOIRES DU CONSEIL**

3. Le groupe "Transport maritime" a examiné le projet de soumission lors de ses réunions du 1er avril et du 7 avril 2022. A l'issue de ces réunions, des modifications ont été apportées au texte afin d'obtenir un consensus; ces modifications figurent dans la version finale en annexe.
4. Le groupe a convenu que la présidence pourrait indiquer au secrétariat de l'OMI, lors de la transmission de la soumission, que celle-ci peut être rendue publique avant le EGDH 6.

## **III. CONCLUSION**

5. Compte tenu de ce qui précède, le Comité des représentants permanents est invité à approuver le projet de soumission en vue de sa transmission par la présidence à l'OMI le 22 avril 2022 au plus tard.

EXPERT GROUP ON DATA  
HARMONIZATION  
6<sup>th</sup> session  
Agenda item X

EGDH 6/X  
X January 2022  
Original: ENGLISH  
Pre-session public release:

**IMO DATA SET RELATED TO "IMO ENVIRONMENTAL INFORMATION (E.G. WASTE DELIVERY, INFORMATION ON BUNKER, BALLAST WATER AND EMISSIONS)"**

**IMO data set related to "Waste delivery receipt"**

**Submitted by Austria, Belgium, Bulgaria, Croatia, Cyprus, Czech Republic, Denmark, Estonia, Finland, France, Germany, Greece, Hungary, Ireland, Italy, Latvia, Lithuania, Luxembourg, Malta, Netherlands, Poland, Portugal, Romania, Slovakia, Slovenia, Spain, Sweden and the European Commission on behalf of the European Union<sup>1</sup>**

**SUMMARY**

*Executive summary:* This document suggests to include a data set related to Waste delivery receipt in the IMO Reference Data Model.

*Strategic direction, if applicable:* Not applicable

*Output:* Not applicable

*Action to be taken:* Paragraph 6

*Related documents:* EGDH 3/21, FAL 43/7/1, FAL43/INF.3, MEPC.1/Circ.834/Rev.1

**Background**

1 FAL 45 approved the IMO Reference Data Model as described in the revised IMO Compendium on facilitation and electronic business. (FAL.5/Circ.44).

2 Document FAL 43/7/1 suggested to amend the IMO Reference Data Model by adding the data models listed in annex to document FAL 43/INF.3 with a view to establish a more comprehensive standardized set of data elements' ID to support common e-business solution processes.

3 In the third session of the EGDH, the group agreed to allocate priority 1 to the dataset on "IMO environmental information (e.g. waste delivery, information on the bunker, ballast water and emission)" and to discuss this data set preferentially in the next session of EGDH.

4 This document suggests to include a data set related to Waste delivery receipt as described in the MEPC.1/Circ.834/Rev.1 to the IMO Reference Data Model.

---

<sup>1</sup> Reservation: the Commission.

## Proposal

5 Annex 1 to this document contains a sequence diagram, which aims to provide clarity of the flow of data related to waste delivery receipt. This sequence diagram is based on the lines in bullet point 52 and the form in the appendix 3 of the MEPC.1/Circ.834/Rev.1 stating that the reception facility **facility provider** should generate the Waste delivery receipt. ~~Bullet point 37 states that the master should request the Waste delivery receipt.~~

6 Annex 2 contains the detailed data set on "Waste delivery receipt".

7 For the identification of the waste types (data element number IMO0183), the code list provided in Annex 4 section 3 of the IMO Compendium should be used. It is worth being noted that in accordance with Directive (EU) 2019/883 on port reception facilities for the delivery of waste from ships, the European Union requires the indication of the amount of "Passively fished waste" in addition to the amounts of the types of waste indicated in the MEPC form. For identifying this additional type of waste, two solutions are suggested:

- Add a code in Annex 4 section 3 of the IMO Compendium (e.g. code 701 – "Passively fished waste"), or
- Reserve a range of codes (e.g. from 900 to 998) for local or regional specific waste types, that could be used by IMO Member States to include a code to identify passively fished waste.

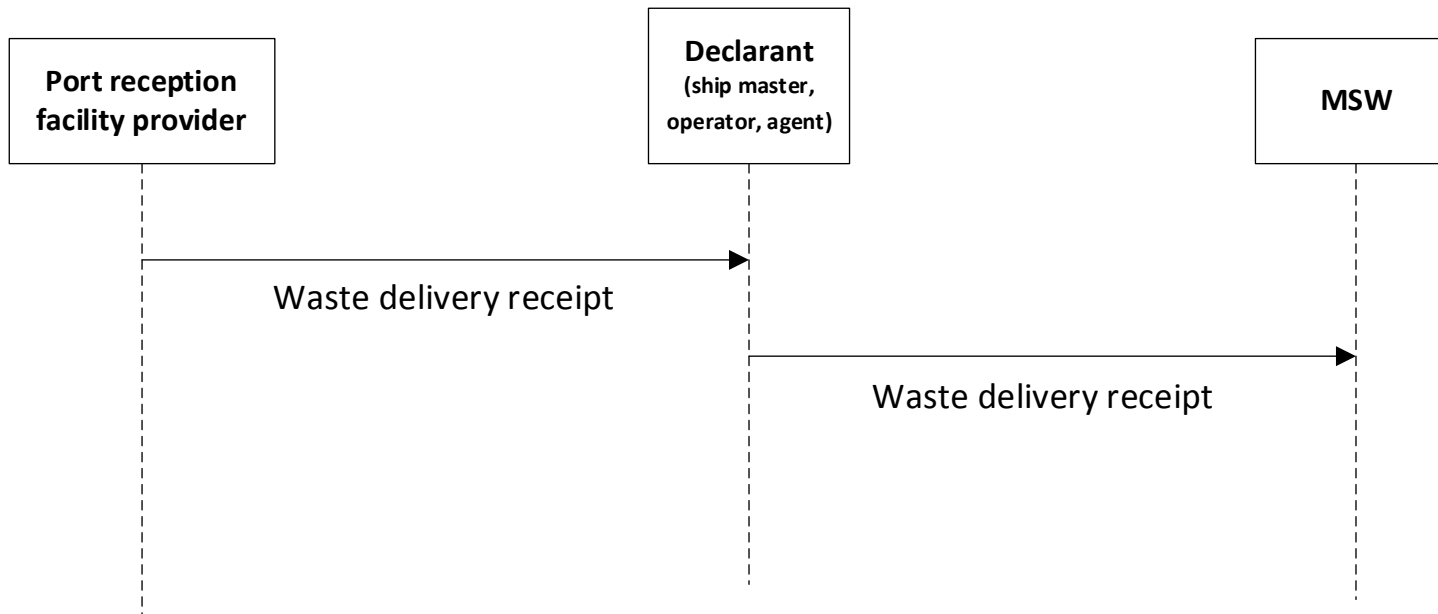
### Action requested of the ~~Expert~~ **Expert** Group on Data Harmonization

8 The Expert Group on Data Harmonization is invited to consider the information contained in this document and take action as appropriate **to include the Waste delivery receipt data set in the IMO Reference Data Model.**

\*\*\*

**ANNEX 1**

**SEQUENCE DIAGRAM RELATED TO WASTE DELIVERY RECEIPT**



\*\*\*

## ANNEX 2

### SUGGESTED DATA SET RELATED TO WASTE DELIVERY RECEIPT

Change Indicator	Data Number	Data Element	Definition	Format	Code lists	Business rules	Notes
	IMO0142	Ship name	The ship's name as shown on the IMO ship's certificates.	an..70			
	IMO0140	Ship number IMO	The unique ship identification number as shown on the ship's documents (e.g. IMO certificates)	an7			
	IMO0136	Ship call sign	A unique ship's identification used primarily for radio communications as shown on the ship's documents (e.g. IMO certificates).	an..7			
	IMO0138	Ship Flag state, coded	The code representing the nationality of the ship shown on its IMO ship's certificate.	an2	ISO 3166-1 alpha-2 code (UN/EDIFACT codes 3207)		
	IMO0160	Ship type, coded	The type of the ship shown on its IMO ship's certificate.	an..4	UN/ECE Recommendation 28		
	IMO0139	Ship gross tonnage	The gross tonnage shown on the ship's International Tonnage Certificate or other document issued by the Flag State or Recognized Organization.	n..14,3			

	IMO0031	IMO Company number	The unique company identification number shown in the Continuous Synopsis Record (CSR)	an..17			
	IMO0032	IMO Company name	The name of the Company shown in the Continuous Synopsis Record (CSR).	an..70			
	IMO0184	Port facility, coded	A code representing the port facility at the port of call (e.g. NLRM-0406)	an..35	UN/LOCODE - facility identifier (e.g. NLRM-0406)		
	IMO0144	Location in port	The name of the berth, terminal or station where the ship is located in the referenced port.	an..70			
+		Port reception facility provider	The name of the port reception facility provider	an..70			
+		Treatment facility provider	The name of the treatment facility provider, if different from the port reception facility provider	an..70			
+		Waste delivery date and time, from	Date and time when the waste delivery started	an..35		BR 01	
+		Waste delivery date and time, to	Date and time when the waste delivery was completed	an..35		BR 01	
	IMO0183	Waste type, coded	A code representing the type of waste being delivered.	an..3	Refer to code list in IMO Compendium Annex 4 section 3		

	IMO0190	Waste description	Additional description of the waste being delivered	an..256			
+		Amount of waste received	The volume of waste received (m3)	n..16,6			
	IMO0016	Authenticator name	The name of the person attesting to the validity of the transmitted information.	an..70			

---