



Council of the  
European Union

**Brussels, 26 October 2023  
(OR. en)**

**14746/23**

**STAT 17  
FIN 1098**

**COVER NOTE**

---

From:	Secretary-General of the European Commission, signed by Ms Martine DEPREZ, Director
date of receipt:	25 October 2023
To:	Ms Thérèse BLANCHET, Secretary-General of the Council of the European Union

---

No. Cion doc.:	COM(2023) 662 final
Subject:	REPORT FROM THE COMMISSION on the use of contract staff in 2020 and 2021

---

Delegations will find attached document COM(2023) 662 final.

Encl.: COM(2023) 662 final



Brussels, 25.10.2023  
COM(2023) 662 final

**REPORT FROM THE COMMISSION**  
**on the use of contract staff in 2020 and 2021**

## Table of Contents

1.	Introduction .....	3
	a) Scope of the report .....	3
	b) Contract staff .....	3
2.	Contract staff in institutions and agencies .....	5
3.	Contract staff at the European Commission.....	6
	a) Evolution in the use of contract staff at the Commission. ....	6
	b) Breakdown by function group of Commission contract staff. ....	7
	c) Breakdown by gender of Commission’s contract staff in 2020 and 2021. ....	8
	d) Breakdown by nationality of Commission’s contract staff in 2020 and 2021 ... .....	10
	e) Breakdown by DG of Commission’s contract staff. ....	21
4.	Contract staff in other institutions and agencies .....	28
	a) Introduction .....	28
	b) Contract staff in the other institutions.....	29
	c) Contract staff in the agencies .....	32
	ANNEX .....	37

## 1. INTRODUCTION

### a) Scope of the report

This report is presented pursuant to Article 79(3) of the Conditions of Employment of Other Servants of the European Union (CEOS), which provides that *'the Commission shall provide a yearly report on the use of contract staff including numbers of staff, level and type of posts, geographical balance and budgetary resources per function group'*. It includes the information related to years 2020 and 2021, with data taken at 31 December of each relevant year.

This report includes data for 60 different entities subdivided between:

- a) The European Commission,
- b) the other Union's institutions as defined in article 13 of the Treaty on the European Union, except for the European Central Bank, and the bodies treated as institutions for the purpose of the Staff Regulations, by virtue of article 1b thereof and
- c) the agencies, i.e. the bodies to whom the Staff Regulations apply under the Union acts establishing them, as provided for by Article 1a, paragraph 2, of the Staff Regulations<sup>1</sup>. These bodies include decentralised agencies, joint undertakings (JU)<sup>2</sup>, the European Institute of Innovation and Technology (EIT) and executive agencies. This report includes for the first time data for the European Public Prosecutor Office (EPPO).

Data concerning the Commission include all contract staff, i.e. staff financed upon administrative, operational and research budget lines, as well as upon revenue stemming from Service Level Agreements with the other institutions and bodies.<sup>3</sup>

### b) Contract staff

The category of contract staff was created in 2004 as part of the reform of the Staff Regulations. Since then, contract staff have made a useful contribution to the work of the institutions by carrying out administrative support activities at a lower cost and by bringing in skills not always readily available within the institutions.

Articles 3a and 3b of the CEOS define the role of contract staff and functions that they may perform.

---

<sup>1</sup> It is to be noted that the Staff Regulations do not apply to the European Central Bank and the European Investment Bank (including the European Investment Fund), which have adopted specific rules for their staff pursuant to Article 36(1) of Protocol n° 4 and Article 11(7) of Protocol n°5 annexed to the Treaties. Also, the Single Resolution Board is not mentioned in this report as it does not employ contract agents. They are therefore out of the scope of this report.

<sup>2</sup> See Article 187 TFEU.

<sup>3</sup> It is to be noted that the budgetary data (sent each year with the draft budget to the Budgetary Authority - Working Document, parts II and III) show contract staff numbers at the time when the draft budget is presented (including contract staff recruited using assigned revenue), i.e.: a statement of the position at 1 April of year N-1 (where N is the year of the draft budget), budgetary implementation in year N-2 and requests for appropriations with estimates of full-time equivalents (FTE) for year N. This is why some differences appear in the numbers for contract staff, depending on the data source. Since several budget lines include appropriations for external personnel without establishing a distinction between the different categories of that personnel, the budget figures convey the best possible estimates based on the likely average costs and the repartition between categories.

3a Contract staff are staff not assigned to a post included in the establishment plan of the institution concerned and engaged for the performance of full-time or part-time duties:

- in an institution: to carry out exclusively manual or administrative support tasks in function group I,
- in the EU Representations and Delegations, the Agencies and other entities: to perform the functions specified in Article 80(2) of the CEOS in function groups I, II, III and IV.

3a Contract staff benefit from a contract that can evolve into a contract of indefinite duration, after a first renewal for a definite duration.

3b Contract staff (or "auxiliary contract staff) are engaged in an institution:

- to perform tasks other than those referred to in article 3a(1)(a) of the CEOS without being assigned to a post included in the establishment plan of the institution concerned, or
- to replace an official or temporary staff member who is temporarily unable to perform his or her duties.

3b Contract staff are engaged for limited duration periods, from a minimum of 3 months to a maximum of 6 years.

Article 80 of the CEOS establishes the correspondance between each function group (FG) and the type of duties to be performed:

<b>Function group</b>	<b>Grade</b>	<b>Tasks</b>
<b>IV</b>	13 to 18	Administrative, advisory, linguistic and equivalent technical tasks, performed under the supervision of officials or temporary staff.
<b>III</b>	8 to 12	Executive tasks, drafting, accountancy and other equivalent technical tasks, performed under the supervision of officials or temporary staff.
<b>II</b>	4 to 7	Clerical and secretarial tasks, office management and other equivalent tasks, performed under the supervision of officials or temporary staff.
<b>I</b>	1 to 3	Manual and administrative support service tasks, performed under the supervision of officials or temporary staff.

## 2. CONTRACT STAFF IN INSTITUTIONS AND AGENCIES

The number of contract staff on 31 December has continued to grow during the years 2020 and 2021. At the Commission, this increase was marginal and, as a consequence, the share of contract staff employed by the Commission compared to the total number of contract staff continued its decline during the last years. An increase is observed in other institutions, with the majority of them in the European Parliament (see table 19a), and in agencies. It is also noted that from a budgetary point of view the salaries of contract staff in agencies are financed through the agencies' operational budget, whereas their pensions are financed by the institutions' overall administrative budget (Heading VII).

The number of Contract Agents on 31<sup>st</sup> December of the respective years is split as follows:

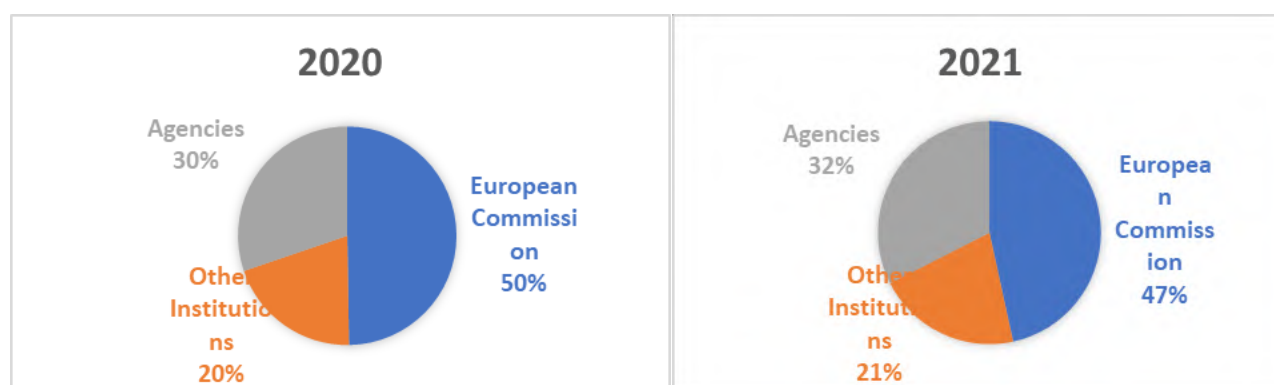
**Table 1 - Number of contract staff at the Commission, other institutions and agencies**

	2020	2021
<b>European Commission</b>	7581	7615
<b>Other institutions</b>	3051	3420
<b>Agencies</b>	4606	5311
<b>Total</b>	<b>15238</b>	<b>16346</b>

**Table 2 - Evolution in the number of contract staff at the Commission, other institutions and agencies**

	2019	2020	2021	2020 vs 2019	2021 vs 2020
<b>European Commission</b>	7478	7581	7615	+ 1.38%	+ 0.45%
<b>Other institutions</b>	2918	3051	3420	+ 4.56%	+ 12.09%
<b>Agencies</b>	4109	4606	5311	+ 12.10%	+ 15.31%
<b>Total</b>	14505	15238	16346	+ 5.05%	+ 7.27%

**Table 3 - Share of the Commission, other institutions and agencies in the total number of contract staff**



**Table 4 - Evolution of the relative share of the Commission, other institutions and agencies and JU in the total number of contract staff**

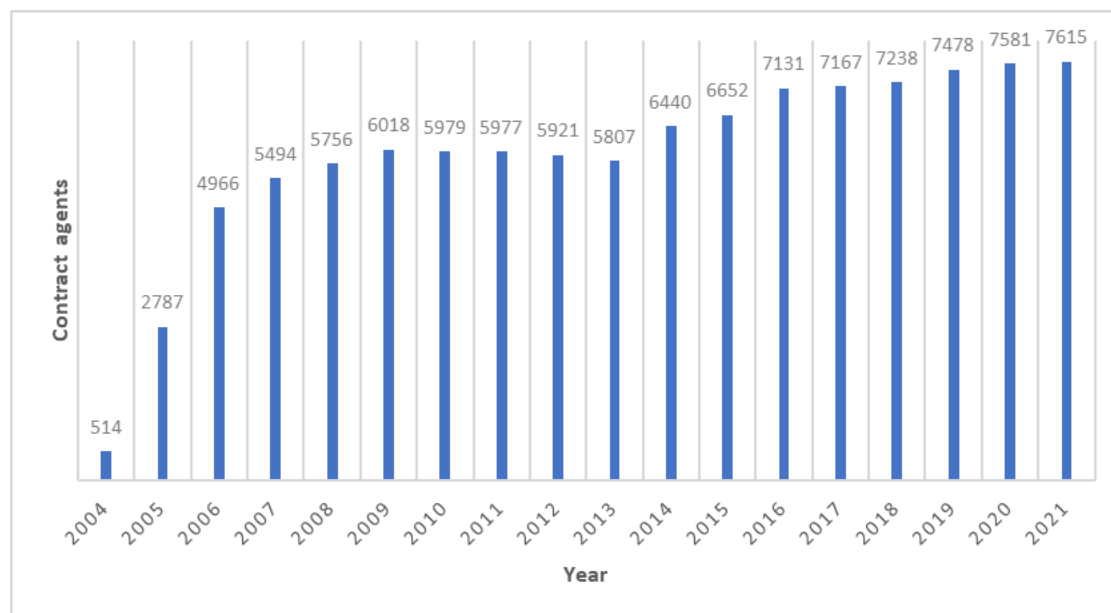
	2018	2019	2020	2021	2020 vs 2019	2021 vs 2020
<b>European Commission</b>	52.29%	51.55%	49.75%	46.59%	-3.5%	-6.4%
<b>Other institutions</b>	18.84%	20.12%	20.02%	20.92%	-0.5%	+4.5%
<b>Agencies and JU</b>	28.86%	28.33%	30.23%	32.49%	+6.7%	+7.5%

### 3. CONTRACT STAFF AT THE EUROPEAN COMMISSION

#### a) Evolution in the use of contract staff at the Commission

The number of contract agents in the Commission evolved as follows since their introduction in 2004.

**Table 5 - Evolution over time within the Commission**



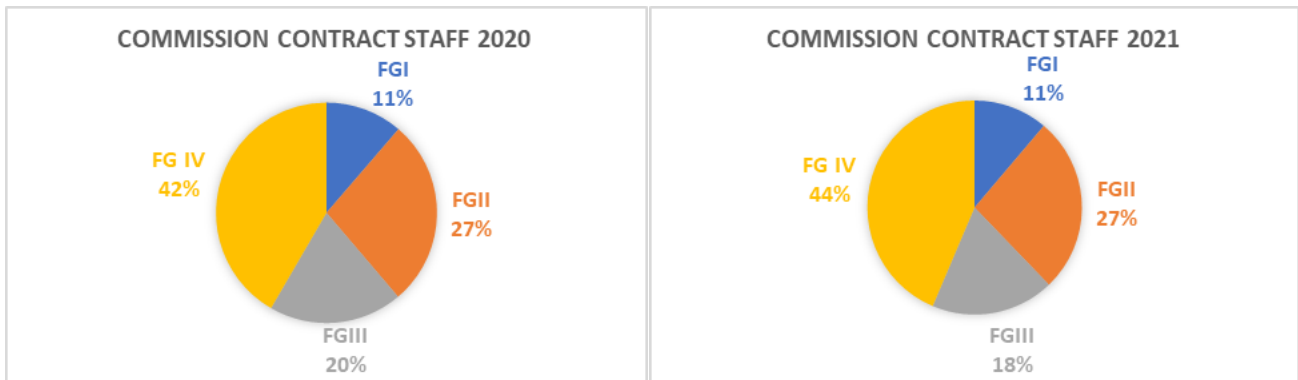
**b) Breakdown by function group of Commission contract staff**

The majority of Commission contract staff (more than 40%) is employed to carry out Administrative, advisory, linguistic and equivalent technical tasks (GF IV)

**Table 6a – Commission contract staff by function group**

	2020	2021
<b>FGI</b>	857	851
<b>FGII</b>	2083	2029
<b>FGIII</b>	1485	1414
<b>FG IV</b>	3156	3321
<b>Total</b>	<b>7581</b>	<b>7615</b>

**Table 6b - Breakdown by Function Group of Commission’s contract staff in 2020 and 2021**



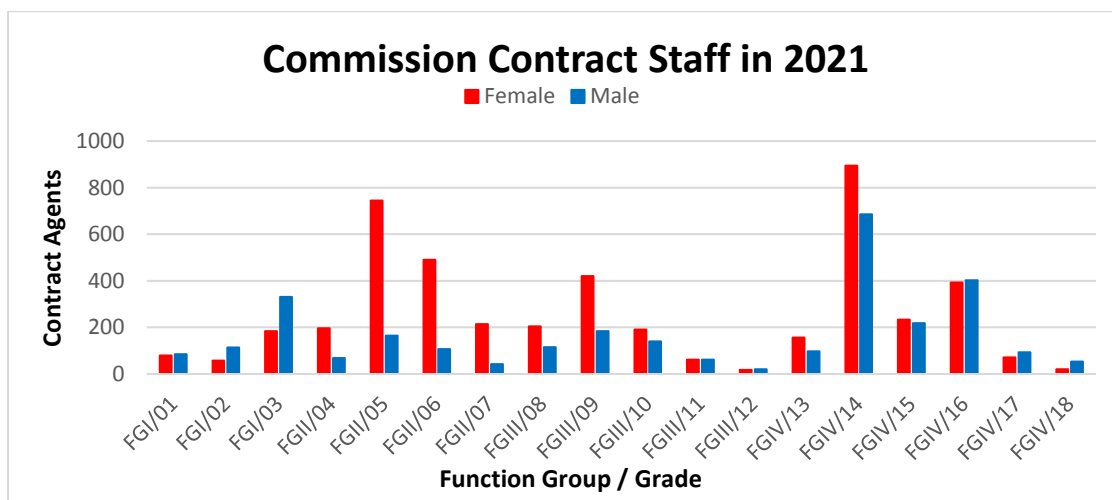
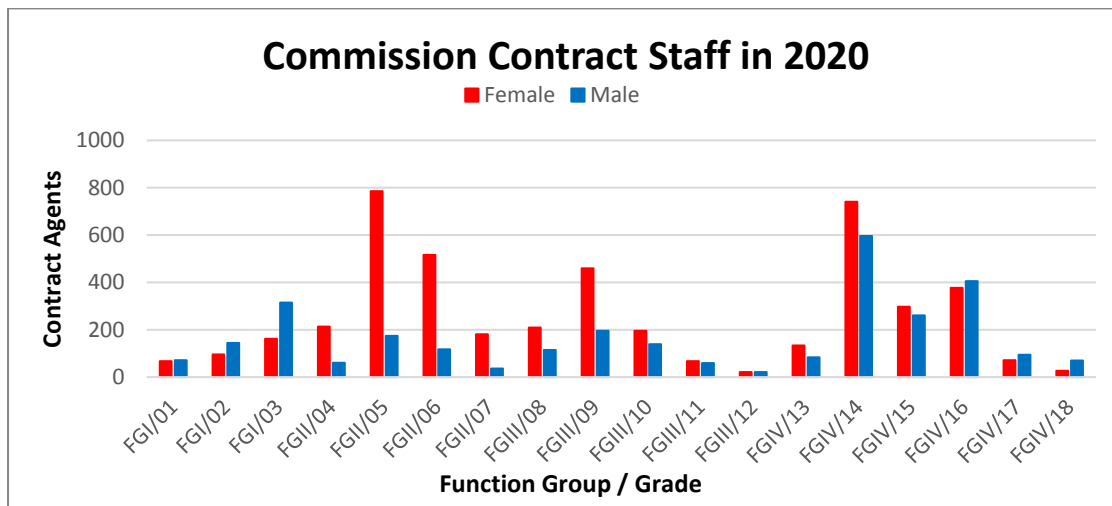
**c) Breakdown by gender of Commission’s contract staff in 2020 and 2021**

At the Commission, contract staff is predominantly feminine (ca 60%, in average). However, there are significant differences depending on the function group.

The distribution is balanced in function group IV (administrative, advisory, linguistic and equivalent technical tasks). Female staff is predominant in functions groups III (executive tasks) and II (clerical and secretarial tasks) while male staff is predominant in function group I (manual tasks).

The breakdown of contract staff by gender, function group (FG and grade) and grade is shown in the charts and tables below.

**Table 7 - Breakdown by gender, FG and grade of Commission’s contract staff in 2020 and 2021**



**Table 8a - Breakdown by function group and gender of Commission's contract staff in 2020**

2020		Female		Male		Total
FG I	FG I 01	67	48%	72	52%	139
	FG I 02	96	40%	145	60%	241
	FG I 03	162	34%	315	66%	477
	<b>FGI all</b>	<b>325</b>	<b>38%</b>	<b>532</b>	<b>62%</b>	<b>857</b>
<b>FG II</b>	<b>FG II 04</b>	213	78%	60	22%	273
	<b>FG II 05</b>	786	82%	174	18%	960
	<b>FG II 06</b>	516	82%	117	18%	633
	<b>FG II 07</b>	181	83%	36	17%	217
	<b>FG II all</b>	<b>1696</b>	<b>81%</b>	<b>387</b>	<b>19%</b>	<b>2083</b>
<b>FG III</b>	<b>FG III 08</b>	210	65%	115	35%	325
	<b>FG III 09</b>	459	70%	196	30%	655
	<b>FG III 10</b>	196	59%	139	41%	335
	<b>FG III 11</b>	68	54%	59	46%	127
	<b>FG III 12</b>	22	51%	21	49%	43
	<b>FG III all</b>	<b>955</b>	<b>64%</b>	<b>530</b>	<b>36%</b>	<b>1485</b>
<b>FG IV</b>	<b>FG IV 13</b>	134	62%	83	38%	217
	<b>FG IV 14</b>	741	55%	596	45%	1337
	<b>FG IV 15</b>	297	53%	261	47%	558
	<b>FG IV 16</b>	377	48%	405	52%	782
	<b>FG IV 17</b>	71	43%	94	57%	165
	<b>FG IV 18</b>	27	28%	70	72%	97
	<b>FG IV all</b>	<b>1647</b>	<b>52%</b>	<b>1509</b>	<b>48%</b>	<b>3156</b>
<b>Total Contract Staff</b>		<b>4623</b>	<b>61%</b>	<b>2958</b>	<b>39%</b>	<b>7581</b>

**Table 8b - Breakdown by function group and gender of Commission's contract staff in 2021**

2021		Female		Male		Total
FG I	FG I 01	80	48%	85	52%	165
	FG I 02	57	33%	114	67%	171
	FG I 03	184	36%	331	64%	515
	<b>FGI all</b>	<b>321</b>	<b>38%</b>	<b>530</b>	<b>62%</b>	<b>851</b>
FG II	FG II 04	196	74%	69	26%	265
	FG II 05	744	82%	165	18%	909
	FG II 06	491	82%	107	18%	598
	FG II 07	214	83%	43	17%	257
	<b>FG II all</b>	<b>1645</b>	<b>81%</b>	<b>384</b>	<b>19%</b>	<b>2029</b>
FG III	FG III 08	205	64%	115	36%	320
	FG III 09	420	70%	184	30%	604
	FG III 10	191	58%	140	42%	331
	FG III 11	61	50%	61	50%	122
	FG III 12	17	46%	20	54%	37
	<b>FG III all</b>	<b>894</b>	<b>63%</b>	<b>520</b>	<b>37%</b>	<b>1414</b>
FG IV	FG IV 13	157	62%	97	38%	253
	FG IV 14	895	57%	686	43%	1581
	FG IV 15	234	52%	218	48%	452
	FG IV 16	393	49%	403	51%	796
	FG IV 17	71	43%	93	57%	164
	FG IV 18	21	28%	53	72%	74
	<b>FG IV all</b>	<b>1771</b>	<b>53%</b>	<b>1550</b>	<b>47%</b>	<b>3321</b>
<b>Total Contract Staff</b>		<b>4631</b>	<b>61%</b>	<b>2984</b>	<b>39%</b>	<b>7615</b>

**d) Breakdown by nationality of Commission's contract staff in 2020 and 2021**

It is worth noting that, as for officials and temporary agents<sup>4</sup>, engagement of contract staff is carried out on the basis of the required profile, the applicants' abilities and language knowledge, without any quotas by nationality.

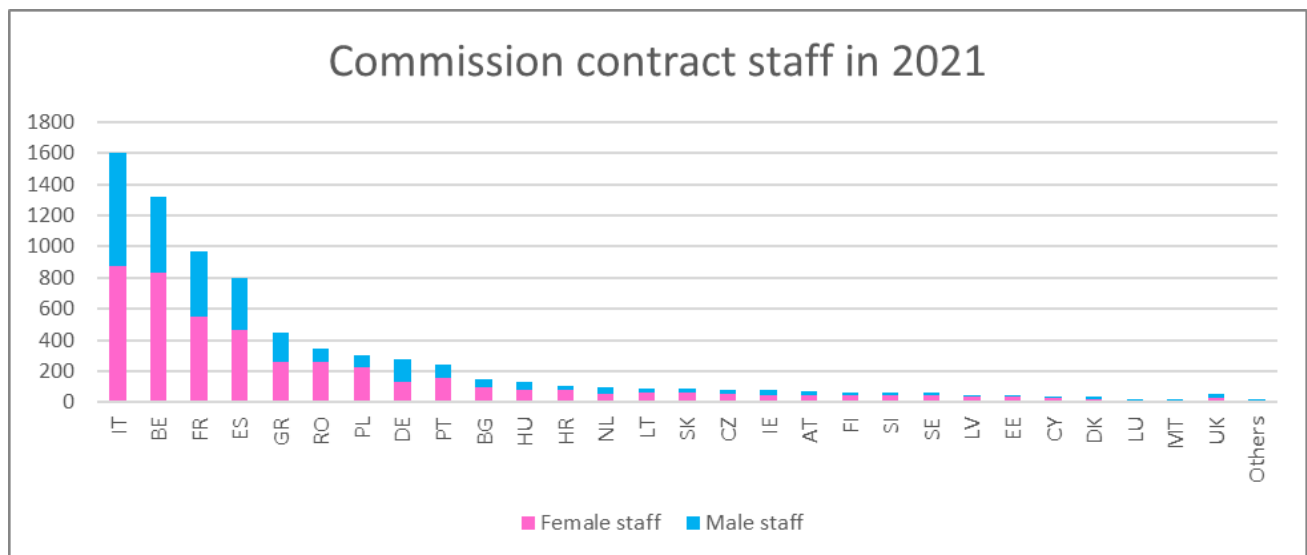
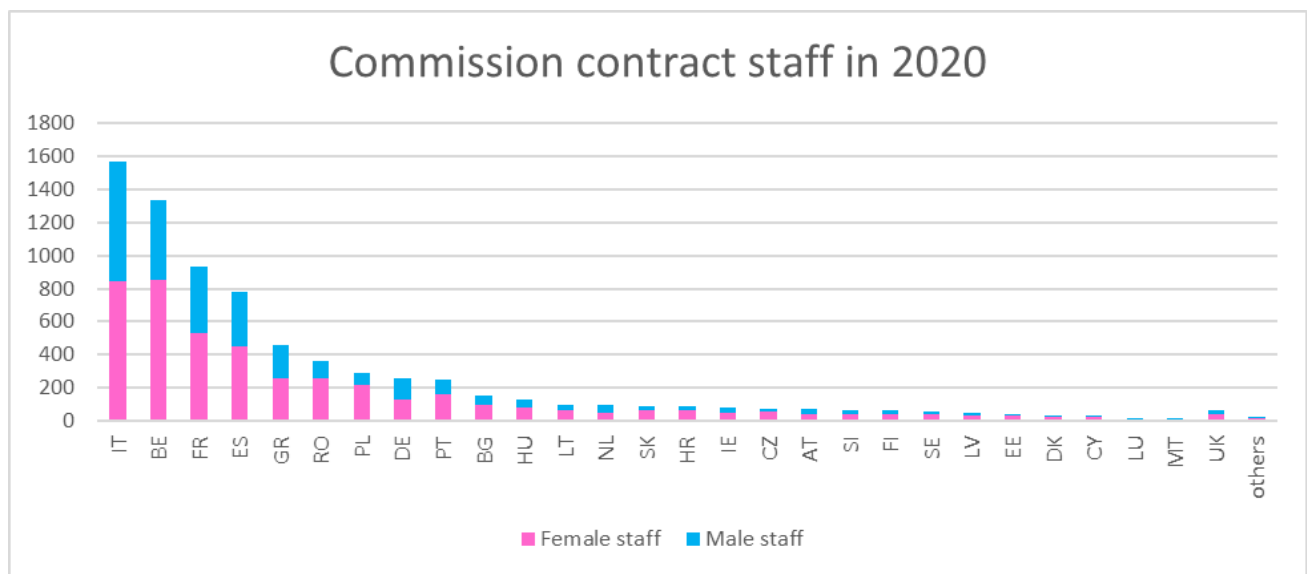
The breakdown by nationality is most likely influenced by a combination of factors, in particular geographical proximity to the location of the institution's headquarters (for the Commission, mainly Brussels, Luxembourg and Ispra), salary levels and the duration of the proposed contracts. Candidates are more likely to accept a post with a fixed-term contract if they are resident at or near the site of the institution offering them a job, also considering that the duration of the first contract is as a general rule of just one year.

<sup>4</sup> See article 27 of the Staff Regulations.

In 2020, as well as in 2021, all Member States were represented in all function groups, with the exception of Austria, which was not represented in Function Group I.

The nationalities most represented among contract staff were - in descending order - Italian, Belgian, French, Spanish and Greek. These five nationalities altogether, which represent ca. 44% of the EU population, account for ca. two thirds of all contract staff (and even almost 85% in FGI). This share has been stable since 2005.

**Table 9 - Breakdown by nationality and gender of Commission's contract staff in 2020 and 2021**



**Table 10a - Contract staff by nationality and gender in 2020 at the Commission**

2020	Female		Male		Total		
	Staff	Share in nationality	Staff	Share in nationality	Staff	Share of Total	Cumulated Share <sup>5</sup>
IT	846	54%	723	46%	1569	20,7%	21%
BE	850	64%	485	36%	1335	17,6%	38%
FR	534	57%	401	43%	935	12,3%	51%
ES	452	58%	325	42%	777	10,2%	61%
GR	262	57%	199	43%	461	6,1%	67%
RO	257	72%	102	28%	359	4,7%	72%
PL	220	75%	72	25%	292	3,9%	76%
DE	131	51%	128	49%	259	3,4%	79%
PT	162	66%	85	34%	247	3,3%	82%
BG	100	66%	51	34%	151	2,0%	84%
HU	83	66%	43	34%	126	1,7%	86%
LT	66	69%	30	31%	96	1,3%	87%
NL	51	54%	43	46%	94	1,2%	88%
SK	65	72%	25	28%	90	1,2%	90%
HR	64	72%	25	28%	89	1,2%	91%
IE	47	60%	31	40%	78	1,0%	92%
CZ	58	76%	18	24%	76	1,0%	93%
AT	45	61%	29	39%	74	1,0%	94%
SI	44	66%	23	34%	67	0,9%	95%
FI	45	69%	20	31%	65	0,9%	96%
SE	39	70%	17	30%	56	0,7%	96%
LV	37	73%	14	27%	51	0,7%	97%
EE	37	90%	4	10%	41	0,5%	97%
DK	25	68%	12	32%	37	0,5%	98%
CY	25	71%	10	29%	35	0,5%	98%
LU	10	67%	5	33%	15	0,2%	99%
MT	9	82%	2	18%	11	0,1%	99%
UK	39	57%	30	43%	69	0,9%	100%
Others	20	77%	6	23%	26	0,3%	100%
<b>Total</b>	<b>4623</b>	<b>61%</b>	<b>2958</b>	<b>39%</b>	<b>7581</b>	<b>100,0%</b>	

<sup>5</sup> Nationalities are ranked in the table from the largest to the smallest. The cumulated share indicates the sum of the shares of the first ranked nationalities

**Table 10b - Contract staff by nationality and gender in 2021 at the Commission**

<b>2021</b>	<b>Female</b>		<b>Male</b>		<b>Total</b>		
<b>All FGs</b>	<b>Staff</b>	<b>Share in nationality</b>	<b>Staff</b>	<b>Share in nationality</b>	<b>Staff</b>	<b>Share of Total</b>	<b>Cumulated Share</b>
IT	874	54%	732	46%	1606	21,1%	21%
BE	829	63%	488	37%	1317	17,3%	38%
FR	552	57%	419	43%	971	12,8%	51%
ES	464	58%	337	42%	801	10,5%	62%
GR	260	58%	187	42%	447	5,9%	68%
RO	261	75%	86	25%	347	4,6%	72%
PL	224	74%	77	26%	301	4,0%	76%
DE	132	48%	141	52%	273	3,6%	80%
PT	156	65%	83	35%	239	3,1%	83%
BG	96	66%	50	34%	146	1,9%	85%
HU	83	65%	45	35%	128	1,7%	86%
HR	77	75%	26	25%	103	1,4%	88%
NL	51	54%	44	46%	95	1,2%	89%
LT	59	66%	31	34%	90	1,2%	90%
SK	60	70%	26	30%	86	1,1%	91%
CZ	54	70%	23	30%	77	1,0%	92%
IE	43	57%	32	43%	75	1,0%	93%
AT	49	68%	23	32%	72	0,9%	94%
FI	46	72%	18	28%	64	0,8%	95%
SI	42	66%	22	34%	64	0,8%	96%
SE	43	74%	15	26%	58	0,8%	97%
LV	36	73%	13	27%	49	0,6%	97%
EE	35	88%	5	13%	40	0,5%	98%
CY	26	72%	10	28%	36	0,5%	98%
DK	21	64%	12	36%	33	0,4%	99%
LU	9	56%	7	44%	16	0,2%	99%
MT	11	85%	2	15%	13	0,2%	99%
UK	28	54%	24	46%	52	0,7%	100%
Others	10	63%	6	38%	16	0,2%	100%
<b>Total</b>	<b>4631</b>	<b>61%</b>	<b>2984</b>	<b>39%</b>	<b>7615</b>	<b>100,0%</b>	

Table 11a - Contract staff by gender and nationality in function group IV in 2020

2020	Female		Male		Total		
FG IV	Staff	Share in nationality	Staff	Share in nationality	Staff	Share of Total	Cumulated Share
IT	360	47%	409	53%	769	24,4%	24%
FR	211	49%	223	51%	434	13,8%	38%
ES	185	51%	181	49%	366	11,6%	50%
BE	116	49%	119	51%	235	7,4%	57%
GR	75	40%	113	60%	188	6,0%	63%
DE	74	45%	92	55%	166	5,3%	68%
PL	81	69%	37	31%	118	3,7%	72%
RO	71	61%	45	39%	116	3,7%	76%
PT	60	59%	41	41%	101	3,2%	79%
BG	54	69%	24	31%	78	2,5%	81%
NL	30	54%	26	46%	56	1,8%	83%
HU	26	49%	27	51%	53	1,7%	85%
AT	29	57%	22	43%	51	1,6%	87%
IE	29	62%	18	38%	47	1,5%	88%
LT	29	64%	16	36%	45	1,4%	89%
SK	24	65%	13	35%	37	1,2%	91%
SI	22	65%	12	35%	34	1,1%	92%
FI	21	64%	12	36%	33	1,0%	93%
HR	19	58%	14	42%	33	1,0%	94%
CZ	24	75%	8	25%	32	1,0%	95%
SE	16	62%	10	38%	26	0,8%	96%
LV	15	65%	8	35%	23	0,7%	96%
DK	14	67%	7	33%	21	0,7%	97%
EE	16	89%	2	11%	18	0,6%	98%
CY	10	83%	2	17%	12	0,4%	98%
LU	8	100%	0	0%	8	0,3%	98%
MT	4	100%	0	0%	4	0,1%	98%
UK	11	32%	23	68%	34	1,1%	99%
Others	13	72%	5	28%	18	0,6%	100%
<b>Total</b>	<b>1647</b>	<b>52%</b>	<b>1509</b>	<b>48%</b>	<b>3156</b>	<b>100,0%</b>	

**Table 11b - Contract staff by gender and nationality in function group IV in 2021**

<b>2021</b>	<b>Female</b>		<b>Male</b>		<b>Total</b>		
<b>FG IV</b>	<b>Staff</b>	<b>Share in nationality</b>	<b>Staff</b>	<b>Share in nationality</b>	<b>Staff</b>	<b>Share of Total</b>	<b>Cumulated Share</b>
IT	399	49%	419	51%	818	24,6%	25%
FR	242	50%	240	50%	482	14,5%	39%
ES	195	50%	192	50%	387	11,7%	51%
BE	126	51%	120	49%	246	7,4%	58%
GR	94	48%	101	52%	195	5,9%	64%
DE	77	43%	101	57%	178	5,4%	69%
PL	81	67%	40	33%	121	3,6%	73%
RO	74	69%	34	31%	108	3,3%	76%
PT	63	62%	39	38%	102	3,1%	79%
BG	49	64%	27	36%	76	2,3%	82%
HU	37	53%	33	47%	70	2,1%	84%
NL	30	55%	25	45%	55	1,7%	85%
AT	30	63%	18	38%	48	1,4%	87%
LT	30	63%	18	38%	48	1,4%	88%
CZ	27	64%	15	36%	42	1,3%	90%
IE	21	54%	18	46%	39	1,2%	91%
SI	24	65%	13	35%	37	1,1%	92%
SK	24	65%	13	35%	37	1,1%	93%
FI	24	69%	11	31%	35	1,1%	94%
HR	19	56%	15	44%	34	1,0%	95%
SE	21	70%	9	30%	30	0,9%	96%
LV	16	70%	7	30%	23	0,7%	97%
DK	12	60%	8	40%	20	0,6%	97%
EE	16	89%	2	11%	18	0,5%	98%
CY	12	75%	4	25%	16	0,5%	98%
LU	5	71%	2	29%	7	0,2%	99%
MT	7	100%		0%	7	0,2%	99%
UK	7	26%	20	74%	27	0,8%	100%
Others	9	60%	6	40%	15	0,5%	100%
<b>Total</b>	<b>1771</b>	<b>53%</b>	<b>1550</b>	<b>47%</b>	<b>3321</b>	<b>100,0%</b>	

Table 12a - Contract staff by gender and nationality in function group III in 2020

2020	Female		Male		Total		
FG III	Staff	Share in nationality	Staff	Share in nationality	Staff	Share of Total	Cumulated Share
IT	177	65%	96	35%	273	18,4%	18%
FR	117	61%	76	39%	193	13,0%	31%
BE	108	59%	74	41%	182	12,3%	44%
ES	90	58%	65	42%	155	10,4%	54%
GR	81	69%	37	31%	118	7,9%	62%
RO	62	72%	24	28%	86	5,8%	68%
PL	46	74%	16	26%	62	4,2%	72%
DE	33	58%	24	42%	57	3,8%	76%
BG	23	56%	18	44%	41	2,8%	79%
PT	21	64%	12	36%	33	2,2%	81%
HR	22	76%	7	24%	29	2,0%	83%
HU	17	65%	9	35%	26	1,8%	85%
SK	20	77%	6	23%	26	1,8%	86%
CZ	18	78%	5	22%	23	1,5%	88%
LT	13	59%	9	41%	22	1,5%	89%
NL	10	53%	9	47%	19	1,3%	91%
SE	12	67%	6	33%	18	1,2%	92%
SI	14	82%	3	18%	17	1,1%	93%
IE	7	50%	7	50%	14	0,9%	94%
LV	11	79%	3	21%	14	0,9%	95%
FI	10	77%	3	23%	13	0,9%	96%
AT	8	67%	4	33%	12	0,8%	96%
CY	6	55%	5	45%	11	0,7%	97%
EE	10	91%	1	9%	11	0,7%	98%
DK	4	57%	3	43%	7	0,5%	98%
LU	1	25%	3	75%	4	0,3%	99%
MT	3	75%	1	25%	4	0,3%	99%
UK	10	71%	4	29%	14	0,9%	100%
Others	1		0		1	0,1%	100%
<b>Total</b>	<b>955</b>	<b>64%</b>	<b>530</b>	<b>36%</b>	<b>1485</b>	<b>100,0%</b>	

**Table 12b - Contract staff by gender and nationality in function group III in 2021**

<b>2021</b>	<b>Female</b>		<b>Male</b>		<b>Total</b>		
<b>FG III</b>	<b>Staff</b>	<b>Share in nationality</b>	<b>Staff</b>	<b>Share in nationality</b>	<b>Staff</b>	<b>Share of Total</b>	<b>Cumulated Share</b>
IT	151	61%	97	39%	248	17,5%	18%
FR	109	58%	79	42%	188	13,3%	31%
ES	104	60%	70	40%	174	12,3%	43%
BE	96	58%	70	42%	166	11,7%	55%
RO	69	75%	23	25%	92	6,5%	61%
GR	58	65%	31	35%	89	6,3%	68%
PL	47	72%	18	28%	65	4,6%	72%
DE	33	55%	27	45%	60	4,2%	77%
HR	26	76%	8	24%	34	2,4%	79%
PT	21	62%	13	38%	34	2,4%	81%
BG	19	59%	13	41%	32	2,3%	84%
SK	18	72%	7	28%	25	1,8%	85%
NL	13	54%	11	46%	24	1,7%	87%
HU	16	73%	6	27%	22	1,6%	89%
LT	10	53%	9	47%	19	1,3%	90%
CZ	11	73%	4	27%	15	1,1%	91%
IE	9	60%	6	40%	15	1,1%	92%
SE	10	67%	5	33%	15	1,1%	93%
AT	11	79%	3	21%	14	1,0%	94%
SI	11	79%	3	21%	14	1,0%	95%
FI	11	85%	2	15%	13	0,9%	96%
LV	10	77%	3	23%	13	0,9%	97%
EE	10	83%	2	17%	12	0,8%	98%
CY	7	78%	2	22%	9	0,6%	98%
DK	3	60%	2	40%	5	0,4%	99%
LU	2	40%	3	60%	5	0,4%	99%
MT	1	50%	1	50%	2	0,1%	99%
UK	8	80%	2	20%	10	0,7%	100%
Others	0		0		0	0,0%	100%
<b>Total</b>	<b>894</b>	<b>63%</b>	<b>520</b>	<b>37%</b>	<b>1414</b>	<b>100,0%</b>	

**Table 13a - Contract staff by gender and nationality in function group II in 2020**

2020 FG II	Female		Male		Total		
	Staff	Share in nationality	Staff	Share in nationality	Staff	Share of Total	Cumulated Share
BE	496	85%	89	15%	585	28,1%	28%
IT	245	80%	63	20%	308	14,8%	43%
FR	184	74%	63	26%	247	11,9%	55%
ES	147	79%	38	21%	185	8,9%	64%
RO	116	82%	25	18%	141	6,8%	70%
GR	94	82%	21	18%	115	5,5%	76%
PL	73	82%	16	18%	89	4,3%	80%
PT	64	86%	10	14%	74	3,6%	84%
HU	37	86%	6	14%	43	2,1%	86%
DE	23	72%	9	28%	32	1,5%	87%
BG	21	75%	7	25%	28	1,3%	89%
LT	24	86%	4	14%	28	1,3%	90%
HR	23	88%	3	12%	26	1,2%	91%
SK	21	84%	4	16%	25	1,2%	92%
CZ	15	79%	4	21%	19	0,9%	93%
NL	11	65%	6	35%	17	0,8%	94%
FI	12	86%	2	14%	14	0,7%	95%
SI	8	62%	5	38%	13	0,6%	95%
LV	11	92%	1	8%	12	0,6%	96%
AT	8	73%	3	27%	11	0,5%	97%
CY	9	82%	2	18%	11	0,5%	97%
IE	9	82%	2	18%	11	0,5%	98%
SE	10	91%	1	9%	11	0,5%	98%
EE	10	100%	0	0%	10	0,5%	99%
DK	6	86%	1	14%	7	0,3%	99%
MT	2	100%	0	0%	2	0,1%	99%
LU	1	100%	0	0%	1	0,0%	99%
UK	13	93%	1	7%	14	0,7%	100%
Others	3	75%	1	25%	4	0,2%	100%
<b>Total</b>	<b>1696</b>	<b>81%</b>	<b>387</b>	<b>19%</b>	<b>2083</b>	<b>100,0%</b>	

**Table 13b - Contract staff by gender and nationality in function group II in 2021**

<b>2021</b>	<b>Female</b>		<b>Male</b>		<b>Total</b>		
<b>FG II</b>	<b>Staff</b>	<b>Share in nationality</b>	<b>Staff</b>	<b>Share in nationality</b>	<b>Staff</b>	<b>Share of Total</b>	<b>Cumulated Share</b>
BE	478	83%	98	17%	576	28,4%	28%
IT	260	81%	60	19%	320	15,8%	44%
FR	181	74%	62	26%	243	12,0%	56%
ES	134	78%	37	22%	171	8,4%	65%
RO	110	85%	20	15%	130	6,4%	71%
GR	96	78%	27	22%	123	6,1%	77%
PL	76	83%	16	17%	92	4,5%	82%
PT	54	86%	9	14%	63	3,1%	85%
HR	32	94%	2	6%	34	1,7%	86%
BG	26	79%	7	21%	33	1,6%	88%
HU	27	84%	5	16%	32	1,6%	90%
DE	21	68%	10	32%	31	1,5%	91%
LT	19	86%	3	14%	22	1,1%	92%
SK	18	82%	4	18%	22	1,1%	93%
CZ	15	83%	3	17%	18	0,9%	94%
IE	11	69%	5	31%	16	0,8%	95%
NL	8	67%	4	33%	12	0,6%	96%
SE	11	92%	1	8%	12	0,6%	96%
FI	9	82%	2	18%	11	0,5%	97%
LV	10	91%	1	9%	11	0,5%	97%
AT	8	80%	2	20%	10	0,5%	98%
SI	7	70%	3	30%	10	0,5%	98%
CY	7	78%	2	22%	9	0,4%	99%
EE	8	100%	0	0%	8	0,4%	99%
DK	6	86%	1	14%	7	0,3%	99%
MT	3	100%	0	0%	3	0,1%	100%
LU	2	100%	0	0%	2	0,1%	100%
UK	8	100%	0	0%	8	0,4%	100%
Others	0		0		0	0,0%	100%
<b>Total</b>	<b>1645</b>	<b>81%</b>	<b>384</b>	<b>19%</b>	<b>2029</b>	<b>100,0%</b>	

**Table 14a - Contract staff by gender and nationality in function group I in 2020**

<b>2020</b>	<b>Female</b>		<b>Male</b>		<b>Total</b>		
<b>FG I</b>	<b>Staff</b>	<b>Share in nationality</b>	<b>Staff</b>	<b>Share in nationality</b>	<b>Staff</b>	<b>Share of Total</b>	<b>Cumulated Share</b>
BE	130	39%	203	61%	333	38,9%	39%
IT	64	29%	155	71%	219	25,6%	64%
ES	30	42%	41	58%	71	8,3%	73%
FR	22	36%	39	64%	61	7,1%	80%
GR	12	30%	28	70%	40	4,7%	84%
PT	17	44%	22	56%	39	4,6%	89%
PL	20	87%	3	13%	23	2,7%	92%
RO	8	50%	8	50%	16	1,9%	94%
IE	2	33%	4	67%	6	0,7%	94%
FI	2	40%	3	60%	5	0,6%	95%
BG	2	50%	2	50%	4	0,5%	95%
DE	1	25%	3	75%	4	0,5%	96%
HU	3	75%	1	25%	4	0,5%	96%
SI	0	0%	3	100%	3	0,4%	97%
CZ	1	50%	1	50%	2	0,2%	97%
DK	1	50%	1	50%	2	0,2%	97%
EE	1	50%	1	50%	2	0,2%	97%
LU	0	0%	2	100%	2	0,2%	98%
LV	0	0%	2	100%	2	0,2%	98%
NL	0	0%	2	100%	2	0,2%	98%
SK	0	0%	2	100%	2	0,2%	98%
CY	0	0%	1	100%	1	0,1%	98%
HR	0	0%	1	100%	1	0,1%	98%
LT	0	0%	1	100%	1	0,1%	99%
MT	0	0%	1	100%	1	0,1%	99%
SE	1	100%	0	0%	1	0,1%	99%
AT	0		0		0	0,0%	99%
UK	5	71%	2	29%	7	0,8%	100%
Others	3	100%	0	0%	3	0,4%	100%
<b>Total</b>	<b>325</b>	<b>38%</b>	<b>532</b>	<b>62%</b>	<b>857</b>	<b>100,0%</b>	

**Table 14b - Contract staff by gender and nationality in function group I in 2021**

2021	Female		Male		Total		
	Staff	Share in nationality	Staff	Share in nationality	Staff	Share of Total	Cumulated Share
BE	129	39%	200	61%	329	38,7%	39%
IT	64	29%	156	71%	220	25,9%	65%
ES	31	45%	38	55%	69	8,1%	73%
FR	20	34%	38	66%	58	6,8%	79%
GR	12	30%	28	70%	40	4,7%	84%
PT	17	44%	22	56%	39	4,6%	89%
PL	20	87%	3	13%	23	2,7%	91%
RO	8	47%	9	53%	17	2,0%	93%
BG	2	40%	3	60%	5	0,6%	94%
FI	2	40%	3	60%	5	0,6%	95%
IE	2	40%	3	60%	5	0,6%	95%
DE	1	25%	3	75%	4	0,5%	96%
HU	3	75%	1	25%	4	0,5%	96%
NL	0	0%	4	100%	4	0,5%	97%
SI	0	0%	3	100%	3	0,4%	97%
CY	0	0%	2	100%	2	0,2%	97%
CZ	1	50%	1	50%	2	0,2%	97%
EE	1	50%	1	50%	2	0,2%	98%
LU	0	0%	2	100%	2	0,2%	98%
LV	0	0%	2	100%	2	0,2%	98%
SK	0	0%	2	100%	2	0,2%	98%
DK	0	0%	1	100%	1	0,1%	98%
HR	0	0%	1	100%	1	0,1%	99%
LT	0	0%	1	100%	1	0,1%	99%
MT	0	0%	1	100%	1	0,1%	99%
SE	1	100%	0	0%	1	0,1%	99%
AT	0		0		0	0,0%	99%
UK	5	71%	2	29%	7	0,8%	100%
Others	2	100%	0	0%	2	0,2%	100%
<b>Total</b>	<b>321</b>	<b>38%</b>	<b>530</b>	<b>62%</b>	<b>851</b>	<b>100,0%</b>	

**e) Breakdown by DG of Commission's contract staff**

The tables below give an overview on the distribution of Commission contract staff across the different Directorates General, services and offices attached to the Commission<sup>67</sup>.

<sup>6</sup> See Annex I for the list with full names of Directorates General s, services and offices on 31 December 2021.

<sup>7</sup> Please note that the scope of the data presented in this chapter is limited to staff in activity at the moment of the snapshot. For this reason the totals do not match with the data displayed in the other chapters.

**Table 15a - Breakdown by gender, DG and two clusters of FGs of Commission's contract staff in 2020**

	FG I-II-III				FG IV				TOTAL ALL FG	
	M	F	Total	%	M	F	Total	%	Total	%
AGRI	6	23	29	38,7%	21	25	46	61,3%	75	1,0%
BUDG	15	37	52	80,0%	5	8	13	20,0%	65	0,9%
CdP-OSP	0	10	10	100,0%	0	0	0	0,0%	10	0,1%
CLIMA	1	14	15	68,2%	5	2	7	31,8%	22	0,3%
CNECT	38	70	108	61,0%	27	42	69	39,0%	177	2,4%
COMM	92	207	299	86,9%	15	30	45	13,1%	344	4,6%
COMP	20	33	53	93,0%	1	3	4	7,0%	57	0,8%
DEFIS	2	13	15	78,9%	0	4	4	21,1%	19	0,3%
DEVCO	64	130	194	18,0%	421	465	886	82,0%	1080	14,5%
DGT	15	31	46	32,9%	30	64	94	67,1%	140	1,9%
DIGIT	13	22	35	42,7%	32	15	47	57,3%	82	1,1%
EAC	20	26	46	76,7%	1	13	14	23,3%	60	0,8%
ECFIN	3	9	12	52,2%	5	6	11	47,8%	23	0,3%
ECHO	35	67	102	64,6%	19	37	56	35,4%	158	2,1%
EMPL	22	63	85	64,4%	18	29	47	35,6%	132	1,8%
ENER	9	32	41	95,3%	0	2	2	4,7%	43	0,6%
ENV	7	31	38	79,2%	6	4	10	20,8%	48	0,6%
EPSO	5	18	23	95,8%	0	1	1	4,2%	24	0,3%
ESTAT	15	32	47	53,4%	10	31	41	46,6%	88	1,2%
FISMA	6	14	20	95,2%	0	1	1	4,8%	21	0,3%
FPI	7	25	32	32,0%	33	35	68	68,0%	100	1,3%
GROW	23	49	72	77,4%	6	15	21	22,6%	93	1,2%
HOME	11	26	37	80,4%	4	5	9	19,6%	46	0,6%
HR	71	131	202	91,4%	10	9	19	8,6%	221	3,0%
IAS	2	2	4	33,3%	3	5	8	66,7%	12	0,2%
IDEA	0	0	0	0,0%	1	0	1	100,0%	1	0,0%
JRC	108	123	231	21,8%	480	351	831	78,2%	1062	14,3%
JUST	6	25	31	83,8%	4	2	6	16,2%	37	0,5%
MARE	10	42	52	76,5%	6	10	16	23,5%	68	0,9%
MOVE	13	37	50	80,6%	3	9	12	19,4%	62	0,8%
NEAR	47	104	151	28,5%	185	194	379	71,5%	530	7,1%
OIB	348	613	961	97,5%	4	21	25	2,5%	986	13,2%
OIL	93	134	227	97,8%	2	3	5	2,2%	232	3,1%
OLAF	7	12	19	86,4%	3	0	3	13,6%	22	0,3%
OP	8	7	15	93,8%	1	0	1	6,3%	16	0,2%
PMO	125	317	442	99,5%	2	0	2	0,5%	444	6,0%
REFORM	5	25	30	46,9%	15	19	34	53,1%	64	0,9%
REGIO	26	65	91	96,8%	3	0	3	3,2%	94	1,3%
RTD	46	86	132	36,1%	95	139	234	63,9%	366	4,9%
SANTE	8	55	63	62,4%	12	26	38	37,6%	101	1,4%
SCIC	29	39	68	100,0%	0	0	0	0,0%	68	0,9%
SG	23	33	56	93,3%	3	1	4	6,7%	60	0,8%
SJ	2	15	17	77,3%	2	3	5	22,7%	22	0,3%
TAXUD	5	10	15	57,7%	4	7	11	42,3%	26	0,3%
TRADE	9	21	30	78,9%	3	5	8	21,1%	38	0,5%
UKTF	0	4	4	100,0%	0	0	0	0,0%	4	0,1%
<b>Total</b>	<b>1 401</b>	<b>2 930</b>	<b>4302</b>	<b>57,8%</b>	<b>1 530</b>	<b>1 617</b>	<b>3141</b>	<b>42,2%</b>	<b>7443</b>	<b>100%</b>

**Table 15b - Breakdown by gender, DG and two clusters of FGs of Commission's contract staff in 2021**

	FG I-II-III				FG IV				TOTAL ALL FG	
	M	F	Total	%	M	F	Total	%	Total	%
AGRI	4	24	28	38,4%	20	25	45	61,6%	73	1,0%
BUDG	12	33	45	65,2%	6	18	24	34,8%	69	0,9%
CdP-OSP	0	11	11	100,0%	0	0	0	0,0%	11	0,1%
CLIMA	2	13	15	68,2%	4	3	7	31,8%	22	0,3%
CNECT	24	41	65	45,5%	29	49	78	54,5%	143	1,9%
COMM	91	218	309	86,6%	18	30	48	13,4%	357	4,8%
COMP	25	31	56	98,2%	0	1	1	1,8%	57	0,8%
DEFIS	3	12	15	75,0%	0	5	5	25,0%	20	0,3%
DGT	16	36	52	34,9%	29	68	97	65,1%	149	2,0%
DIGIT	14	18	32	37,2%	40	14	54	62,8%	86	1,2%
EAC	12	25	37	74,0%	1	12	13	26,0%	50	0,7%
ECFIN	4	4	8	11,6%	27	34	61	88,4%	69	0,9%
ECHO	35	71	106	62,4%	25	39	64	37,6%	170	2,3%
EMPL	19	57	76	55,5%	25	36	61	44,5%	137	1,8%
ENER	12	29	41	93,2%	2	1	3	6,8%	44	0,6%
ENV	7	24	31	75,6%	5	5	10	24,4%	41	0,5%
EPSO	5	16	21	95,5%	0	1	1	4,5%	22	0,3%
ESTAT	18	33	51	58,6%	8	28	36	41,4%	87	1,2%
FISMA	3	16	19	76,0%	2	4	6	24,0%	25	0,3%
FPI	10	26	36	29,8%	38	47	85	70,2%	121	1,6%
GROW	14	31	45	55,6%	13	23	36	44,4%	81	1,1%
HERA	0	1	1	50,0%	1	0	1	50,0%	2	0,0%
HOME	11	26	37	80,4%	2	7	9	19,6%	46	0,6%
HR	66	143	209	90,9%	9	12	21	9,1%	230	3,1%
IAS	2	2	4	44,4%	1	4	5	55,6%	9	0,1%
IDEA	0	0	0	0,0%	0	0	0	0,0%	0	0,0%
INTPA	64	128	192	17,4%	437	474	911	82,6%	1103	14,7%
JRC	120	135	255	22,8%	483	381	864	77,2%	1119	15,0%
JUST	8	25	33	84,6%	3	3	6	15,4%	39	0,5%
MARE	11	36	47	73,4%	6	11	17	26,6%	64	0,9%
MOVE	14	33	47	81,0%	4	7	11	19,0%	58	0,8%
NEAR	33	100	133	26,0%	179	199	378	74,0%	511	6,8%
OIB	364	620	984	97,3%	5	22	27	2,7%	1011	13,5%
OIL	93	145	238	97,9%	2	3	5	2,1%	243	3,2%
OLAF	6	11	17	85,0%	3	0	3	15,0%	20	0,3%
OP	15	11	26	96,3%	0	1	1	3,7%	27	0,4%
PMO	125	308	433	99,3%	2	1	3	0,7%	436	5,8%
REFORM	7	18	25	43,1%	12	21	33	56,9%	58	0,8%
REGIO	37	56	93	76,2%	6	23	29	23,8%	122	1,6%
RTD	24	43	67	27,8%	71	103	174	72,2%	241	3,2%
SANTE	8	50	58	63,7%	9	24	33	36,3%	91	1,2%
SCIC	29	39	68	100,0%	0	0	0	0,0%	68	0,9%
SG	22	26	48	81,4%	8	3	11	18,6%	59	0,8%
SJ	1	15	16	69,6%	2	5	7	30,4%	23	0,3%
TAXUD	3	11	14	58,3%	3	7	10	41,7%	24	0,3%
TRADE	10	21	31	77,5%	4	5	9	22,5%	40	0,5%
<b>Total</b>	<b>1 401</b>	<b>2 930</b>	<b>4 175</b>	<b>55,8%</b>	<b>1 530</b>	<b>1 617</b>	<b>3 303</b>	<b>44,2%</b>	<b>7 478</b>	<b>100%</b>

## Contract staff 3a

Table 16a - 3a contract staff by FG, gender and DG in 2020 at the Commission

	FGI			FGII			FGIII			FGIV			Total	%
	M	F	TOTAL	M	F	TOTAL	M	F	TOTAL	M	F	TOTAL		
AGRI	3	5	8	0	0	0	0	0	0	2	1	3	11	0,3%
BUDG	5	10	15	0	0	0	0	0	0	0	0	0	15	0,4%
CdP-OSP	0	0	0	0	0	0	0	0	0	0	0	0	0	0,0%
CLIMA	0	1	1	0	0	0	0	0	0	0	0	0	1	0,0%
CNECT	7	3	10	0	0	0	0	0	0	0	1	1	11	0,3%
COMM	31	5	36	32	127	159	19	66	85	15	30	45	325	9,3%
COMP	6	2	8	0	0	0	0	0	0	0	0	0	8	0,2%
DEFIS	0	1	1	0	0	0	0	0	0	0	0	0	1	0,0%
DEVCO	3	8	11	0	0	0	23	12	35	356	334	690	736	21,1%
DGT	3	4	7	0	0	0	0	0	0	0	0	0	7	0,2%
DIGIT	1	3	4	0	0	0	0	0	0	0	0	0	4	0,1%
EAC	10	1	11	0	0	0	0	0	0	0	0	0	11	0,3%
ECFIN	1	0	1	0	0	0	0	0	0	0	0	0	1	0,0%
ECHO	1	5	6	0	0	0	0	0	0	0	0	0	6	0,2%
EMPL	4	13	17	0	0	0	0	0	0	0	0	0	17	0,5%
ENER	2	8	10	0	0	0	0	0	0	0	0	0	10	0,3%
ENV	1	0	1	0	0	0	0	0	0	0	0	0	1	0,0%
EPSO	1	0	1	4	16	20	0	2	2	0	1	1	24	0,7%
ESTAT	2	3	5	0	0	0	0	0	0	0	0	0	5	0,1%
FISMA	0	2	2	0	0	0	0	0	0	0	0	0	2	0,1%
FPI	0	2	2	0	1	1	2	1	3	28	26	54	60	1,7%
GROW	1	6	7	0	0	0	0	0	0	0	0	0	7	0,2%
HR	28	24	52	0	0	0	0	0	0	0	0	0	52	1,5%
JRC	56	8	64	0	0	0	0	0	0	0	0	0	64	1,8%
JUST	1	1	2	0	0	0	0	0	0	0	0	0	2	0,1%
MARE	3	11	14	0	0	0	0	0	0	4	2	6	20	0,6%
MOVE	2	6	8	0	0	0	0	0	0	0	0	0	8	0,2%
NEAR	4	6	10	0	0	0	14	9	23	156	139	295	328	9,4%
OIB	222	68	290	85	502	587	41	43	84	4	21	25	986	28,2%
OIL	36	9	45	44	106	150	13	19	32	2	3	5	232	6,6%
OLAF	4	3	7	0	0	0	0	0	0	0	0	0	7	0,2%
OP	2	0	2	0	0	0	0	0	0	0	0	0	2	0,1%
PMO	28	9	37	58	258	316	39	50	89	2	0	2	444	12,7%
REGIO	4	3	7	0	0	0	0	0	0	0	0	0	7	0,2%
RTD	9	7	16	0	0	0	0	0	0	2	0	2	18	0,5%
SANTE	1	6	7	0	0	0	0	0	0	0	0	0	7	0,2%
SCIC	17	8	25	0	0	0	0	0	0	0	0	0	25	0,7%
SG	10	8	18	0	0	0	0	0	0	0	0	0	18	0,5%
SJ	1	0	1	0	0	0	0	0	0	0	0	0	1	0,0%
TAXUD	1	0	1	0	0	0	0	0	0	0	0	0	1	0,0%
TRADE	2	2	4	1	2	3	0	0	0	3	1	4	11	0,3%
<b>TOTAL</b>	<b>513</b>	<b>261</b>	<b>774</b>	<b>224</b>	<b>1012</b>	<b>1236</b>	<b>151</b>	<b>202</b>	<b>353</b>	<b>574</b>	<b>559</b>	<b>1133</b>	<b>3496</b>	<b>100%</b>

Table 16b - 3a contract staff by FG, gender and DG in 2021 at the Commission

	FGI			FGII			FGIII			FGIV			Total	%
	M	F	TOTAL	M	F	TOTAL	M	F	TOTAL	M	F	TOTAL		
AGRI	3	5	8	0	0	0	0	0	0	2	1	3	11	0,3%
BUDG	5	10	15	0	0	0	0	0	0	0	0	0	15	0,4%
CdP-OSP	0	0	0	0	0	0	0	0	0	0	0	0	0	0,0%
CLIMA	0	1	1	0	0	0	0	0	0	0	0	0	1	0,0%
CNECT	7	3	10	0	0	0	0	0	0	0	0	0	10	0,3%
COMM	32	5	37	28	132	160	20	72	92	18	30	48	337	9,5%
COMP	5	2	7	0	0	0	0	0	0	0	0	0	7	0,2%
DEFIS	0	1	1	0	0	0	0	0	0	0	0	0	1	0,0%
DGT	3	4	7	0	0	0	0	0	0	0	0	0	7	0,2%
DIGIT	1	3	4	0	0	0	0	0	0	0	0	0	4	0,1%
EAC	3	1	4	0	0	0	0	0	0	0	0	0	4	0,1%
ECFIN	1	0	1	0	0	0	0	0	0	0	0	0	1	0,0%
ECHO	1	5	6	0	0	0	0	0	0	0	0	0	6	0,2%
EMPL	4	12	16	0	0	0	0	0	0	0	0	0	16	0,5%
ENER	2	8	10	0	0	0	0	0	0	0	0	0	10	0,3%
ENV	1	0	1	0	0	0	0	0	0	0	0	0	1	0,0%
EPSO	1	0	1	4	15	19	0	1	1	0	1	1	22	0,6%
ESTAT	2	3	5	0	0	0	0	0	0	0	0	0	5	0,1%
FISMA	0	2	2	0	0	0	0	0	0	0	0	0	2	0,1%
FPI	0	2	2	0	0	0	2	1	3	29	31	60	65	1,8%
GROW	1	6	7	0	0	0	0	0	0	0	0	0	7	0,2%
HR	25	24	49	0	0	0	0	0	0	0	0	0	49	1,4%
INTPA	3	8	11	0	0	0	23	11	34	364	336	700	745	21,1%
JRC	56	8	64	0	0	0	0	0	0	0	0	0	64	1,8%
JUST	1	1	2	0	0	0	0	0	0	0	0	0	2	0,1%
MARE	3	10	13	0	0	0	0	0	0	4	2	6	19	0,5%
MOVE	2	6	8	0	0	0	0	0	0	0	0	0	8	0,2%
NEAR	4	6	10	0	0	0	7	9	16	150	145	295	321	9,1%
OIB	222	68	290	93	501	594	49	51	100	5	22	27	1011	28,6%
OIL	34	8	42	44	111	155	15	26	41	2	3	5	243	6,9%
OLAF	4	2	6	0	0	0	0	0	0	0	0	0	6	0,2%
OP	10	0	10	0	0	0	0	0	0	0	0	0	10	0,3%
PMO	24	7	31	58	250	308	43	51	94	2	1	3	436	12,4%
REGIO	4	2	6	0	0	0	0	0	0	0	0	0	6	0,2%
RTD	9	6	15	0	0	0	0	0	0	1	1	2	17	0,5%
SANTE	1	6	7	0	0	0	0	0	0	0	0	0	7	0,2%
SCIC	18	8	26	0	0	0	0	0	0	0	0	0	26	0,7%
SG	9	6	15	0	0	0	0	0	0	0	0	0	15	0,4%
SJ	1	0	1	0	0	0	0	0	0	0	0	0	1	0,0%
TAXUD	1	0	1	0	0	0	0	0	0	0	0	0	1	0,0%
TRADE	1	2	3	1	1	2	0	0	0	4	1	5	10	0,3%
<b>TOTAL</b>	<b>504</b>	<b>251</b>	<b>755</b>	<b>228</b>	<b>1010</b>	<b>1238</b>	<b>159</b>	<b>222</b>	<b>381</b>	<b>581</b>	<b>574</b>	<b>1155</b>	<b>3529</b>	<b>100%</b>

## Contract staff 3b

Table 17a - 3b contract staff by FG, gender and DG in 2020 at the Commission

	FGII			FGIII			FGIV			Total	%
	M	F	TOTAL	M	F	TOTAL	M	F	TOTAL		
AGRI	2	11	13	1	7	8	19	24	43	64	1,6%
BUDG	1	9	10	9	18	27	5	8	13	50	1,3%
CdP-OSP	0	10	10	0	0	0	0	0	0	10	0,3%
CLIMA	1	10	11	0	3	3	5	2	7	21	0,5%
CNECT	2	25	27	29	42	71	27	41	68	166	4,2%
COMM	1	3	4	9	6	15	0	0	0	19	0,5%
COMP	4	10	14	10	21	31	1	3	4	49	1,2%
DEFIS	0	8	8	2	4	6	0	4	4	18	0,5%
DEVCO	13	40	53	25	70	95	65	131	196	344	8,7%
DGT	11	27	38	1	0	1	30	64	94	133	3,4%
DIGIT	2	5	7	10	14	24	32	15	47	78	2,0%
EAC	2	11	13	8	14	22	1	13	14	49	1,2%
ECFIN	0	3	3	2	6	8	5	6	11	22	0,6%
ECHO	8	21	29	26	41	67	19	37	56	152	3,9%
EMPL	5	22	27	13	28	41	18	29	47	115	2,9%
ENER	2	8	10	5	16	21	0	2	2	33	0,8%
ENV	3	23	26	3	8	11	6	4	10	47	1,2%
ESTAT	6	18	24	7	11	18	10	31	41	83	2,1%
FISMA	1	4	5	5	8	13	0	1	1	19	0,5%
FPI	1	5	6	4	16	20	5	9	14	40	1,0%
GROW	3	14	17	19	29	48	6	15	21	86	2,2%
HOME	2	5	7	9	21	30	4	5	9	46	1,2%
HR	22	72	94	21	35	56	10	9	19	169	4,3%
IAS	1	2	3	1	0	1	3	5	8	12	0,3%
IDEA	0	0	0	0	0	0	1	0	1	1	0,0%
JRC	21	73	94	31	42	73	480	351	831	998	25,3%
JUST	1	10	11	4	14	18	4	2	6	35	0,9%
MARE	1	8	9	6	23	29	2	8	10	48	1,2%
MOVE	1	20	21	10	11	21	3	9	12	54	1,4%
NEAR	4	27	31	25	62	87	29	55	84	202	5,1%
OLAF	1	3	4	2	6	8	3	0	3	15	0,4%
OP	1	1	2	5	6	11	1	0	1	14	0,4%
REFORM	1	7	8	4	18	22	15	19	34	64	1,6%
REGIO	5	11	16	17	51	68	3	0	3	87	2,2%
RTD	7	33	40	30	46	76	93	139	232	348	8,8%
SANTE	3	38	41	4	11	15	12	26	38	94	2,4%
SCIC	9	29	38	3	2	5	0	0	0	43	1,1%
SG	7	13	20	6	12	18	3	1	4	42	1,1%
SJ	0	12	12	1	3	4	2	3	5	21	0,5%
TAXUD	0	3	3	4	7	11	4	7	11	25	0,6%
TRADE	0	12	12	6	5	11	0	4	4	27	0,7%
UKTF	0	2	2	0	2	2	0	0	0	4	0,1%
<b>TOTAL</b>	<b>155</b>	<b>668</b>	<b>823</b>	<b>377</b>	<b>739</b>	<b>1116</b>	<b>926</b>	<b>1082</b>	<b>2008</b>	<b>3947</b>	<b>100%</b>

Table 17b - 3b contract staff by FG, gender and DG in 2021 at the Commission

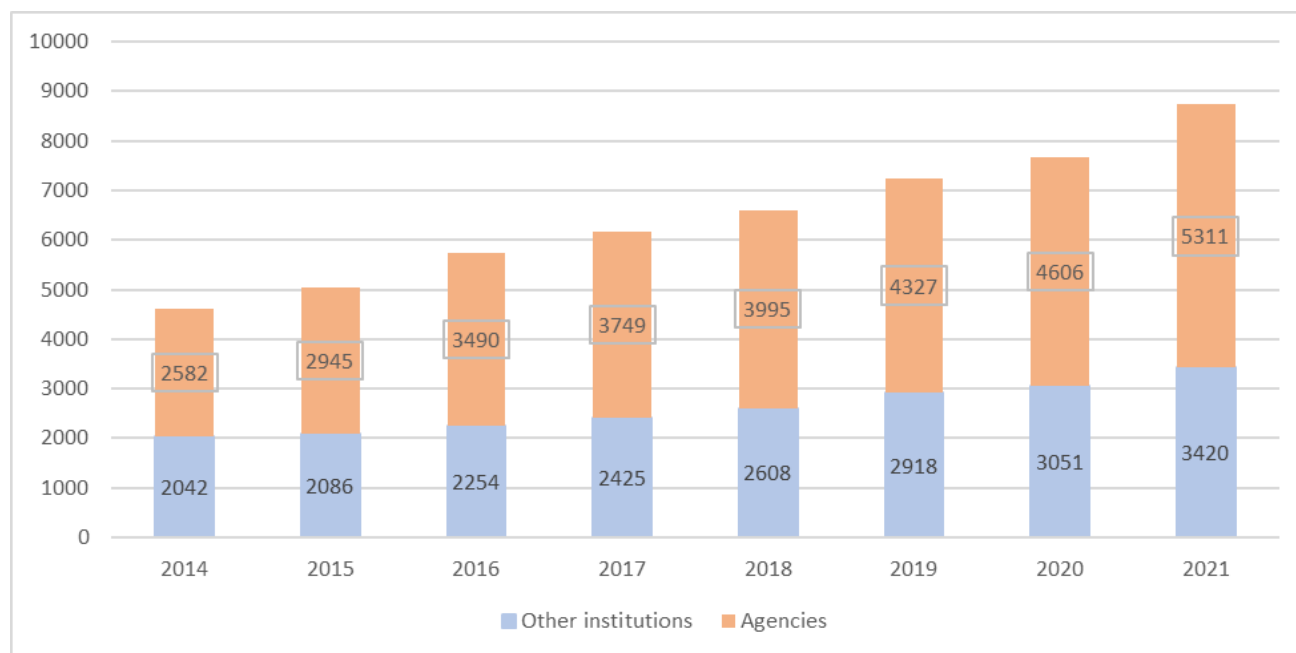
	FGII			FGIII			FGIV			Total	%
	M	F	TOTAL	M	F	TOTAL	M	F	TOTAL		
AGRI	0	10	10	1	9	10	18	24	42	62	1,6%
BUDG	1	7	8	6	16	22	6	18	24	54	1,4%
CdP-OSP	0	11	11	0	0	0	0	0	0	11	0,3%
CLIMA	2	9	11	0	3	3	4	3	7	21	0,5%
CNECT	1	22	23	16	16	32	29	49	78	133	3,4%
COMM	1	3	4	10	6	16	0	0	0	20	0,5%
COMP	4	7	11	16	22	38	0	1	1	50	1,3%
DEFIS	1	7	8	2	4	6	0	5	5	19	0,5%
DGT	13	31	44	0	1	1	29	68	97	142	3,6%
DIGIT	1	4	5	12	11	23	40	14	54	82	2,1%
EAC	1	11	12	8	13	21	1	12	13	46	1,2%
ECFIN	0	0	0	3	4	7	27	34	61	68	1,7%
ECHO	4	22	26	30	44	74	25	39	64	164	4,2%
EMPL	2	22	24	13	23	36	25	36	61	121	3,1%
ENER	3	6	9	7	15	22	2	1	3	34	0,9%
ENV	1	16	17	5	8	13	5	5	10	40	1,0%
ESTAT	5	19	24	11	11	22	8	28	36	82	2,1%
FISMA	1	3	4	2	11	13	2	4	6	23	0,6%
FPI	1	6	7	7	17	24	9	16	25	56	1,4%
GROW	3	8	11	10	17	27	13	23	36	74	1,9%
HERA	0	0	0	0	1	1	1	0	1	2	0,1%
HOME	2	7	9	9	19	28	2	7	9	46	1,2%
HR	21	81	102	20	38	58	9	12	21	181	4,6%
IAS	1	2	3	1	0	1	1	4	5	9	0,2%
INTPA	15	37	52	23	72	95	73	138	211	358	9,1%
JRC	23	77	100	41	50	91	483	381	864	1055	26,7%
JUST	3	9	12	4	15	19	3	3	6	37	0,9%
MARE	1	4	5	7	22	29	2	9	11	45	1,1%
MOVE	2	18	20	10	9	19	4	7	11	50	1,3%
NEAR	4	25	29	18	60	78	29	54	83	190	4,8%
OLAF	1	4	5	1	5	6	3	0	3	14	0,4%
OP	0	1	1	5	10	15	0	1	1	17	0,4%
REFORM	3	5	8	4	13	17	12	21	33	58	1,5%
REGIO	3	14	17	30	40	70	6	23	29	116	2,9%
RTD	3	18	21	12	19	31	70	102	172	224	5,7%
SANTE	6	32	38	1	12	13	9	24	33	84	2,1%
SCIC	8	30	38	3	1	4	0	0	0	42	1,1%
SG	8	10	18	5	10	15	8	3	11	44	1,1%
SJ	0	11	11	0	4	4	2	5	7	22	0,6%
TAXUD	1	3	4	1	8	9	3	7	10	23	0,6%
TRADE	3	12	15	5	6	11	0	4	4	30	0,8%
<b>TOTAL</b>	<b>153</b>	<b>624</b>	<b>777</b>	<b>359</b>	<b>665</b>	<b>1024</b>	<b>963</b>	<b>1185</b>	<b>2148</b>	<b>3949</b>	<b>100%</b>

## 4. CONTRACT STAFF IN OTHER INSTITUTIONS AND AGENCIES

### a) Introduction

The number of contract agents working for the other institutions increased by 4,56% from 2019 to 2020 and by 12,09% from 2020 to 2021. For agencies, the increase is of 12.10% and 15.31% respectively.

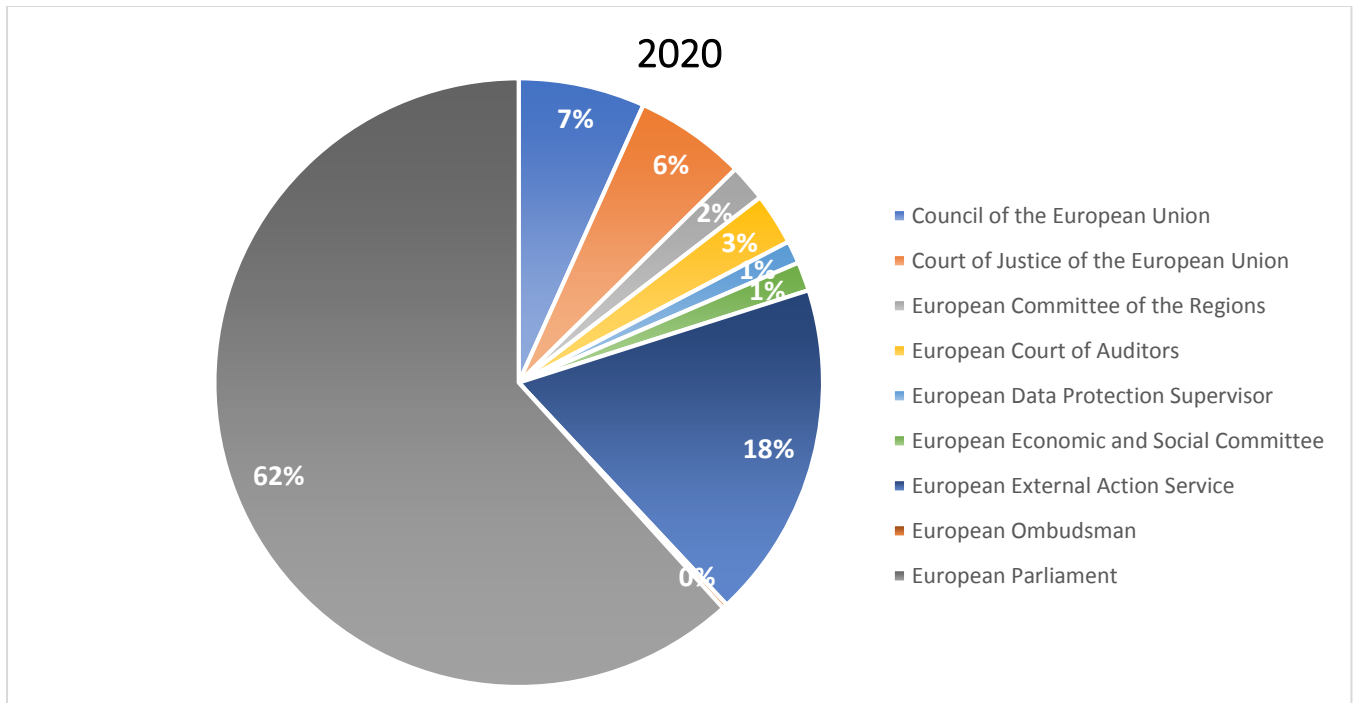
**Table 18a - Trends in the breakdown of contract staff between other institutions and agencies**



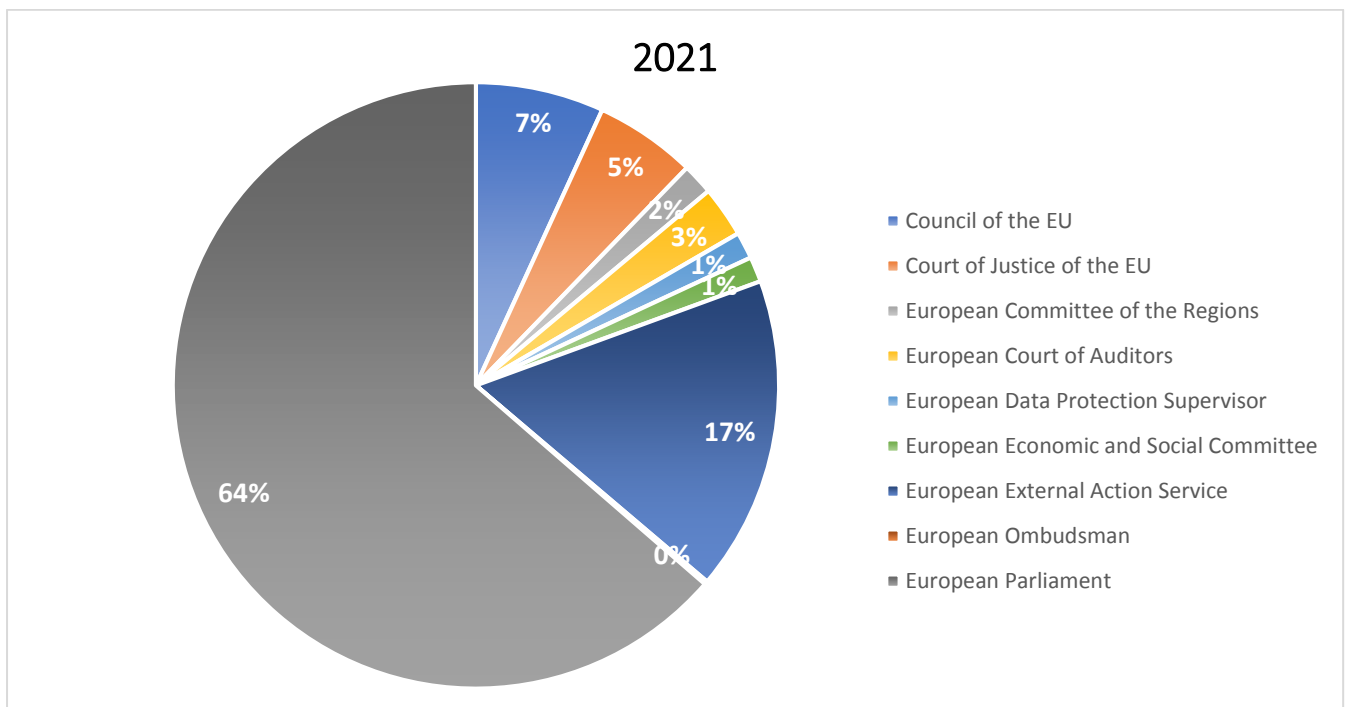
**b) Contract staff in the other institutions**

The tables below show the distribution of contract agents in institutions other than the Commission.

**Table 19a Breakdown of contract staff among the other institutions in 2020**



**Table 19b Breakdown of contract staff among the other institutions in 2021**



**Table 20a – Breakdown by gender and function group in the other institutions in 2020**

	FGI			FGII			FGIII			FGIV			Total
	F	M	Total	F	M	Total	F	M	Total	F	M	Total	
COMMITTEE OF THE REGIONS	8	17	25	8	2	10	2	2	4	9	12	21	60
COUNCIL OF THE EUROPEAN UNION	27	118	145	14	5	19	9	2	11	19	11	30	205
COURT OF AUDITORS	5	37	42	10	3	13	11	4	15	11	3	14	84
COURT OF JUSTICE	6	83	89	12	12	24	38	18	56	7	4	11	180
EUROPEAN DATA PROTECTION SUPERVISOR	0	0	0	6	2	8	7	5	12	11	6	17	37
EUROPEAN ECONOMIC AND SOCIAL COMMITTEE	8	14	22	12	2	14	4	2	6	3	2	5	47
EUROPEAN EXTERNAL ACTION SERVICE	19	19	38	142	13	155	69	69	138	96	120	216	547
EUROPEAN OMBUDSMAN	1	1	2	1	1	2	2	0	2	1	1	2	8
EUROPEAN PARLIAMENT	237	730	967	135	41	176	242	150	392	206	142	348	1883
<b>Total</b>	<b>311</b>	<b>1019</b>	<b>1330</b>	<b>340</b>	<b>81</b>	<b>421</b>	<b>384</b>	<b>252</b>	<b>636</b>	<b>363</b>	<b>301</b>	<b>664</b>	<b>3051</b>

**Table 20b - Breakdown by gender and function group in the other institutions in 2021**

	FGI			FGII			FGIII			FGIV			Total
	F	M	Total	F	M	Total	F	M	Total	F	M	Total	
COMMITTEE OF THE REGIONS	8	16	24	6	1	7	7	3	10	9	7	16	57
COUNCIL OF THE EUROPEAN UNION	27	120	147	14	3	17	20	4	24	30	16	46	234
COURT OF AUDITORS	5	36	41	13	3	16	13	5	18	14	4	18	93
COURT OF JUSTICE	5	83	88	12	10	22	36	23	59	8	8	16	185
EUROPEAN DATA PROTECTION SUPERVISOR				7	1	8	13	4	17	18	6	24	49
EUROPEAN ECONOMIC AND SOCIAL COMMITTEE	8	14	22	9	3	12	3	3	6	5	1	6	46
EUROPEAN EXTERNAL ACTION SERVICE	17	18	35	140	14	154	70	85	155	106	124	230	574
EUROPEAN OMBUDSMAN					1	1	2		2	3		3	6
EUROPEAN PARLIAMENT	246	834	1080	158	38	196	285	242	527	222	151	373	2176
<b>Total</b>	<b>316</b>	<b>1121</b>	<b>1437</b>	<b>359</b>	<b>74</b>	<b>433</b>	<b>449</b>	<b>369</b>	<b>818</b>	<b>415</b>	<b>317</b>	<b>732</b>	<b>3420</b>

**Table 21a – Breakdown by nationality in the other institutions in 2020**

	AT	BE	BG	CY	CZ	DE	DK	EE	EL	ES	FI	FR	HR	HU	IE	IT	LT	LU	LV	MT	NL	PL	PT	RO	SE	SI	SK	UK	Other	Total
COMMITTEE OF THE REGIONS	0	18	1	1	3	3	0	1	6	5	2	5	0	1	2	8	0	0	0	0	0	2	0	0	0	0	1	1	0	60
COUNCIL OF THE EUROPEAN UNION	2	77	5	1	2	4	0	2	8	19	2	10	1	1	0	36	0	1	0	2	1	8	8	7	3	0	2	3	0	205
COURT OF AUDITORS	1	7	1	0	0	5	0	3	8	3	1	21	0	2	0	10	3	5	1	0	0	0	9	2	0	2	0	0	0	84
COURT OF JUSTICE		14	3	0	3	8	2	2	8	7	2	62	2	4	3	15	2	6	1	1	2	5	14	4	2	3	2	3	180	
EUROPEAN DATA PROTECTION SUPERVISOR	0	7	2	0	0	1	0	0	5	2	0	5	0	0	0	6	0	0	0	0	1	3	2	1	0	0	0	2	0	37
EUROPEAN ECONOMIC AND SOCIAL COMMITTEE	1	14	0	0	1	0	0	0	3	7	0	2	0	0	0	9	1	0	0	0	0	0	4	4	0	0	1	0	0	47
EUROPEAN EXTERNAL ACTION SERVICE	7	121	20	3	3	25	1	4	19	51	6	85	3	9	6	74	6	0	5	0	7	13	23	41	3	2	4	5	1	547
EUROPEAN OMBUDSMAN	0	1	0	0	0	1	0	0	1	0	0	1	0	0	1	0	1	0	0	0	1	1	0	0	0	0	0	0	0	8
EUROPEAN PARLIAMENT	12	443	43	6	14	58	8	10	99	153	13	356	20	27	17	198	14	10	6	4	24	64	76	131	13	14	15	26	9	1883
<b>Grand Total</b>	<b>23</b>	<b>702</b>	<b>75</b>	<b>11</b>	<b>26</b>	<b>105</b>	<b>11</b>	<b>22</b>	<b>157</b>	<b>247</b>	<b>26</b>	<b>547</b>	<b>26</b>	<b>44</b>	<b>29</b>	<b>356</b>	<b>27</b>	<b>22</b>	<b>13</b>	<b>7</b>	<b>36</b>	<b>96</b>	<b>136</b>	<b>190</b>	<b>21</b>	<b>21</b>	<b>25</b>	<b>40</b>	<b>10</b>	<b>3051</b>

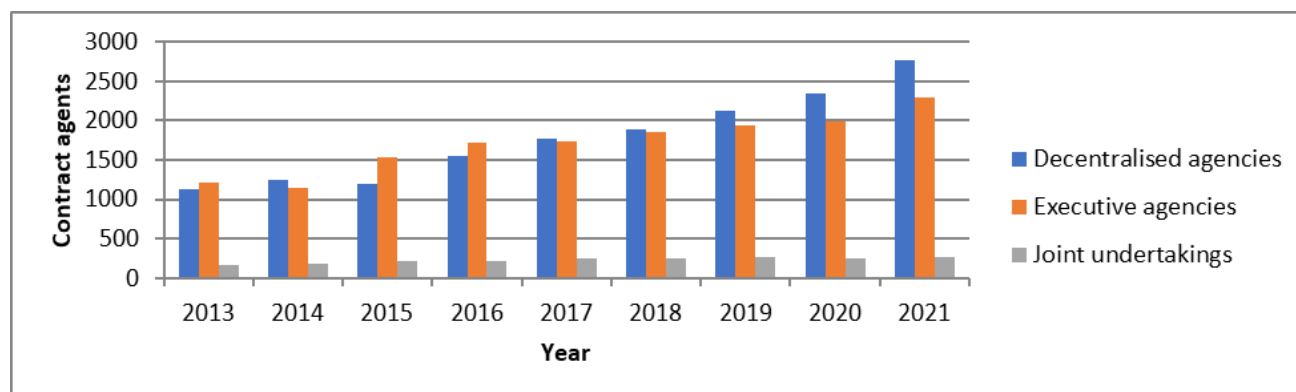
**Table 21b – Breakdown by nationality in the other institutions in 2021**

	AT	BE	BG	CY	CZ	DE	DK	EE	EL	ES	FI	FR	HR	HU	IE	IT	LT	LU	LV	MT	NL	PL	PT	RO	SE	SI	SK	Other	Total
COMMITTEE OF THE REGIONS	0	18	0	1	2	5	0	1	4	6	0	4	0	1	2	8	0	0	0	0	0	1	0	1	0	0	2	1	57
COUNCIL OF THE EUROPEAN UNION	2	81	4	1	2	6	0	2	10	26	2	14	1	1	4	40	0	1	2	0	1	9	10	7	3	1	2	2	234
COURT OF AUDITORS	0	8	1	1	0	6	0	2	7	8	1	20	1	2	2	10	4	4	1	0	0	0	9	2	0	3	0	1	93
COURT OF JUSTICE	0	16	2	0	3	5	1	2	8	10	2	64	1	5	3	17	2	6	1	1	2	5	12	5	2	3	2	5	185
EUROPEAN DATA PROTECTION SUPERVISOR	0	7	4	0	0	2	0	0	7	4	0	8	0	0	0	10	0	0	0	0	0	2	1	1	0	0	1	2	49
EUROPEAN ECONOMIC AND SOCIAL COMMITTEE	1	14	0	0	0	1	0	0	5	5	1	4	0	0	0	7	1	0	0	0	0	0	4	3	0	0	0	0	46
EUROPEAN EXTERNAL ACTION SERVICE	8	123	19	3	3	25	1	4	28	54	7	79	2	10	5	73	9	0	5	0	9	17	27	45	2	4	4	8	574
EUROPEAN OMBUDSMAN	0	0	0	0	0	1	0	0	0	1	0	2	0	0	1	0	0	0	0	0	0	1	0	0	0	0	0	0	6
EUROPEAN PARLIAMENT	15	527	44	5	14	72	8	15	112	174	15	396	23	24	17	236	17	15	5	6	32	51	93	184	16	16	17	27	2176
<b>Grand Total</b>	<b>26</b>	<b>794</b>	<b>75</b>	<b>11</b>	<b>24</b>	<b>123</b>	<b>10</b>	<b>26</b>	<b>181</b>	<b>288</b>	<b>28</b>	<b>591</b>	<b>28</b>	<b>43</b>	<b>34</b>	<b>401</b>	<b>33</b>	<b>26</b>	<b>14</b>	<b>7</b>	<b>44</b>	<b>86</b>	<b>156</b>	<b>248</b>	<b>23</b>	<b>27</b>	<b>28</b>	<b>46</b>	<b>3420</b>

### c) Contract staff in the agencies

The following table shows the evolution of the number of contract staff in the agencies since 2013.

**Table 22a - Breakdown of contract staff by type of agency in 2013 – 2021**



In 2020, 51.1% of contract staff were employed in decentralised agencies, 43.3% in executive agencies and 5.6% in joint undertakings. In 2021, respectively 52.0%, 43.1% and 4.9%. These figures are in line with the observed increase in the relative share of decentralised agencies and a decrease in the relative share of executive agencies and Joint Undertakings.

**Table 22b - Breakdown of contract staff by type of agency in 2013 – 2021**

	2013	2014	2015	2016	2017	2018	2019	2020	2021
Decentralised agencies	44,6%	48,3%	40,8%	44,3%	47,2%	47,4%	49,1%	51,1%	52,0%
Executive agencies	48,5%	44,7%	52,0%	49,3%	46,2%	46,5%	44,9%	43,3%	43,1%
Joint undertakings	6,9%	7,0%	7,2%	6,4%	6,6%	6,1%	6,0%	5,6%	4,9%

The breakdown by function group, gender and nationality are as follows.

**Table 23a - Breakdown by function group in 2020**

	GFI		GFII		GFIII		GFIV		TOTAL	
Decentralised agencies	45	60,0%	273	42,3%	811	48,1%	1223	55,6%	2352	51,1%
Executive agencies	29	38,7%	349	54,0%	770	45,7%	847	38,5%	1995	43,3%
Joint undertakings	1	1,3%	24	3,7%	104	6,2%	130	5,9%	259	5,6%

**Table 23b - Breakdown by function group in 2021**

	GFI		GFII		GFIII		GFIV		TOTAL	
Decentralised agencies	45	57,7%	222	39,3%	918	48,2%	1578	57,1%	2763	52,0%
Executive agencies	32	41,0%	320	56,6%	881	46,3%	1054	38,1%	2287	43,1%
Joint undertakings	1	1,3%	23	4,1%	104	5,5%	133	4,8%	261	4,9%

Table 24a - Breakdown by function group and gender in 2020

			FGI			FGII			FGIII			FGIV			Total
			F	M	Total	F	M	Total	F	M	Total	F	M	Total	
<b>Decentralised agencies</b>			<b>10</b>	<b>35</b>	<b>45</b>	<b>215</b>	<b>58</b>	<b>273</b>	<b>557</b>	<b>254</b>	<b>811</b>	<b>602</b>	<b>621</b>	<b>1223</b>	<b>2352</b>
BEREC	Riga, LV	Agency for Support for BEREC			0	3	1	4		5	5	6	5	11	20
CPVO	Angers, FR	Community Plant Variety Office			0			0		2	2		2	2	4
EUROJUST	The Hague, NL	Eurojust			0	4	1	5	12	1	13	3	3	6	24
EU-OSHA	Bilbao, ES	European Agency for Safety and Health at Work			0	8	1	9	11	2	13	3	2	5	27
EASO	Valletta, MT	European Asylum Support Office			0	11	6	17	9	11	20	34	18	52	89
EBA	Paris, FR	European Banking Authority			0			0	5	3	8	26	11	37	45
FRONTEX	Warsaw, PL	European Border and Coast Guard Agency		19	19	8	1	9	80	11	91	66	202	268	387
ECDC	Stockholm, SE	European Centre for Disease Prevention and Control		2	2	10	3	13	31	5	36	36	20	56	107
CEDEFOP	Thessaloniki, EL	European Centre for the Development of Vocational Training		3	3	11	1	12		2	2	1	2	3	20
ECHA	Helsinki, FI	European Chemicals Agency	3		3	27	7	34	26	29	55	20	19	39	131
EEA	Copenhagen, DK	European Environment Agency			0	8		8	9	3	12	36	24	60	80
EFCA	Vigo, ES	European Fisheries Control Agency	1		1	1		1	8	1	9	3		3	14
EFSA	Parma, IT	European Food Safety Authority	1		1	15	4	19	5	4	9	62	32	94	123
EUROFUND	Dublin, IE	European Foundation for the Improvement of Living and Working Conditions			0	2	1	3	2	1	3	3	2	5	11
GSA	Prague, CZ	European GNSS Agency			0	1		1	7	5	12	22	26	48	61
EIGE	Vilnius, LT	European Institute for Gender Equality			0	3		3	7	1	8	1	2	3	14
EIOPA	Frankfurt a.M., DE	European Insurance and Occupational Pensions Authority			0	1		1	20	1	21	4	4	8	30
ELA	Bratislava, SK	European Labour Authority			0			0	3	1	4	6		6	10
EMSA	Lisbon, PT	European Maritime Safety Agency		2	2	14	4	18	6	3	9	8	9	17	46
EMA	Amsterdam, NL	European Medicines Agency	2		2	25	1	26	55	22	77	69	25	94	199
EMCDDA	Lisbon, PT	European Monitoring Centre for Drugs and Drug Addiction		2	2	13	1	14	5	2	7	4	4	8	31
EPPO	Luxembourg, LU	European Public Prosecutor's Office			0		3	3	1		1	1	2	3	7
ESMA	Paris, FR	European Securities and Markets Authority			0			0	19	5	24	17	29	46	70
ETF	Turin, IT	European Training Foundation			0	7	2	9	18	2	20	9	3	12	41
ENISA	Heraklion, EL	European Union Agency for Cybersecurity		1	1			0	5	4	9	11	6	17	27
FRA	Vienna, AT	European Union Agency for Fundamental Rights			0	3	1	4	6	4	10	12	7	19	33
EUROPOL	The Hague, NL	European Union Agency for Law Enforcement Cooperation	1		1	30	20	50	65	43	108	16	31	47	206
CEPOL	Budapest, HU	European Union Agency for Law Enforcement Training			0			0	20	6	26	10	10	20	46
ERA	Valenciennes, FR	European Union Agency for Railways	2	1	3	7		7	2	3	5	4	13	17	32
ACER	Ljubljana, SL	European Union Agency for the Cooperation of Energy Regulators			0			0	3	1	4	9	17	26	30
EU-LISA	Tallinn, EE; Strasbourg, FR	European Union Agency for the Operational Management of Large-Scale IT Systems in the Area of Freedom, Security and Justice			0			0	14	13	27	18	37	55	82
EASA	Cologne, DE	European Union Aviation Safety Agency			0			0	41	19	60	12	16	28	88
EUIPO	Alicante, ES	European Union Intellectual Property Office		5	5	1		1	57	33	90	62	37	99	195
CDT	Luxembourg, LU	Translation Centre for the Bodies of the European Union			0	2		2	5	6	11	8	1	9	22
<b>Executive agencies</b>			<b>15</b>	<b>14</b>	<b>29</b>	<b>307</b>	<b>42</b>	<b>349</b>	<b>508</b>	<b>262</b>	<b>770</b>	<b>530</b>	<b>317</b>	<b>847</b>	<b>1995</b>
CHAFEA	Luxembourg, LU	Consumers, Health, Agriculture and Food Executive Agency		1	1	4		4	7	5	12	25	15	40	57
EACEA	Brussels, BE	Education, Audiovisual and Culture Executive Agency	2	3	5	55	8	63	110	65	175	71	22	93	336
ERCEA	Brussels, BE	European Research Council Executive Agency	4	3	7	73	14	87	89	52	141	89	56	145	380
EASME	Brussels, BE	Executive Agency for Small and Medium-sized Enterprises		2	2	31	4	35	94	39	133	126	81	207	377
INEA	Brussels, BE	Innovation and Networks Executive Agency	3		3	28	2	30	52	29	81	77	49	126	240
REA	Brussels, BE	Research Executive Agency	6	5	11	116	14	130	156	72	228	142	94	236	605
<b>Joint undertakings</b>			<b>1</b>	<b>0</b>	<b>1</b>	<b>20</b>	<b>4</b>	<b>24</b>	<b>77</b>	<b>27</b>	<b>104</b>	<b>52</b>	<b>78</b>	<b>130</b>	<b>259</b>
BBI	Brussels, BE	Bio-based Industries Joint Undertaking			0			0	3	2	5	4	1	5	10
Clean Sky	Brussels, BE	Clean Sky 2 Joint Undertaking			0			0	2	4	6	1		1	7
ECSEL	Brussels, BE	ECSEL Joint Undertaking	1		1	4		4	7	2	9	1	1	2	16
EHPC	Brussels, BE	European High Performance Computing Joint Undertaking			0	1	1	2	1	2	3	1	1	2	7
EIT	Budapest, HU	European Institute of Innovation and Technology			0	1	1	2	6	5	11	7	2	9	22
FCH2	Brussels, BE	Fuel Cells and Hydrogen 2 Joint Undertaking			0	1		1		1	1		1	1	3
F4E	Barcelona, ES	Fusion for Energy Joint Undertaking			0	11	1	12	48	6	54	29	66	95	161
IMI2	Brussels, BE	IMI 2 Joint Undertaking			0	1		1	9	2	11		3	3	15
SESAR	Brussels, BE	SESAR Joint Undertaking			0			0			0	2		2	2
S2R	Brussels, BE	Shift2Rail Joint Undertaking			0	1	1	2	1	3	4	7	3	10	16
<b>Total Agencies</b>			<b>26</b>	<b>49</b>	<b>75</b>	<b>542</b>	<b>104</b>	<b>646</b>	<b>1142</b>	<b>543</b>	<b>1685</b>	<b>1184</b>	<b>1016</b>	<b>2200</b>	<b>4606</b>

Table 24b - Breakdown by function group and gender in 2021

			FGI			FGII			FGIII			FGIV			Total		
			F	M	Total	F	M	Total	F	M	Total	F	M	Total	F	M	
<b>Decentralised agencies</b>			<b>10</b>	<b>35</b>	<b>45</b>	<b>165</b>	<b>57</b>	<b>222</b>	<b>629</b>	<b>289</b>	<b>918</b>	<b>769</b>	<b>809</b>	<b>1578</b>	<b>2763</b>		
BEREC	Riga, LV	Agency for Support for BEREC				4		4	1	4	5	7	5	12	21		
CPVO	Angers, FR	Community Plant Variety Office								2	2	2	1	3	5		
EU-OSHA	Bilbao, ES	European Agency for Safety and Health at Work				6	1	7	12	3	15	3	3	6	28		
EASO	Valletta, MT	European Asylum Support Office				7	6	13	32	19	51	72	30	102	166		
EBA	Paris, FR	European Banking Authority							5	2	7	26	15	41	48		
FRONTEX	Warsaw, PL	European Border and Coast Guard Agency		21	21	5	1	6	82	17	99	102	279	381	507		
ECDC	Stockholm, SE	European Centre for Disease Prevention and Control		1	1	10	1	11	31	7	38	42	28	70	120		
CEDEFOP	Thessaloniki, EL	European Centre for the Development of Vocational Training		3	3	9	1	10		1	1	1	3	4	18		
ECHA	Helsinki, FI	European Chemicals Agency	3		3	23	6	29	32	28	60	23	18	41	133		
EEA	Copenhagen, DK	European Environment Agency				8		8	7	4	11	38	24	62	81		
EFCA	Vigo, ES	European Fisheries Control Agency	1		1	1		1	8		8	2		2	12		
EFSA	Parma, IT	European Food Safety Authority	1		1	14	5	19	7	4	11	66	44	110	141		
EUROFUND	Dublin, IE	European Foundation for the Improvement of Living and Working Conditions				2	1	3	1	1	2	5	3	8	13		
EIGE	Vilnius, LT	European Institute for Gender Equality				1	1	2	6	1	7	1	2	3	12		
EIOPA	Frankfurt a.M., DE	European Insurance and Occupational Pensions Authority				1		1	21	3	24	5	4	9	34		
ELA	Bratislava, SK	European Labour Authority							4	3	7	3	1	4	11		
EMSA	Lisbon, PT	European Maritime Safety Agency		2	2	14	4	18	5	4	9	8	13	21	50		
EMA	Amsterdam, NL	European Medicines Agency	2		2				83	24	107	68	28	96	205		
EMCDDA	Lisbon, PT	European Monitoring Centre for Drugs and Drug Addiction		1	1	9	3	12	9	4	13	5	5	10	36		
EPPO	Luxembourg, LU	European Public Prosecutor's Office	0	0	0	0	3	3	8	4	12	5	10	15	30		
ESMA	Paris, FR	European Securities and Markets Authority							25	5	30	21	34	55	85		
ETF	Turin, IT	European Training Foundation				4	2	6	18	3	21	12	2	14	41		
EUROJUST	The Hague, NL	European Union Agency for Criminal Justice Cooperation				3	1	4	18	4	22	9	7	16	42		
ENISA	Heraklion, EL	European Union Agency for Cybersecurity		1	1				5	3	8	11	8	19	28		
FRA	Vienna, AT	European Union Agency for Fundamental Rights				4		4	5	6	11	12	7	19	34		
EUROPOL	The Hague, NL	European Union Agency for Law Enforcement Cooperation	1		1	30	21	51	66	48	114	31	40	71	237		
CEPOL	Budapest, HU	European Union Agency for Law Enforcement Training							23	9	32	10	16	26	58		
ERA	Valenciennes, FR	European Union Agency for Railways	2	1	3	7		7	2	3	5	6	16	22	37		
ACER	Ljubljana, SL	European Union Agency for the Cooperation of Energy Regulators							4	4	8	11	16	27	35		
EU-LISA	Tallinn, EE; Strasbourg, FR	European Union Agency for the Operational Management of Large-Scale IT Systems in the Area of Freedom, Security and Justice				2		2	21	20	41	20	44	64	107		
EUSPA	Prague, CZ	European Union Agency for the Space Programme				1		1	7	5	12	19	24	43	56		
EASA	Cologne, DE	European Union Aviation Safety Agency							40	18	58	11	16	27	85		
EUIPO	Alicante, ES	European Union Intellectual Property Office		5	5				33	19	52	106	61	167	224		
CDT	Luxembourg, LU	Translation Centre for the Bodies of the European Union							8	7	15	6	2	8	23		
<b>Executive agencies</b>			<b>18</b>	<b>14</b>	<b>32</b>	<b>280</b>	<b>40</b>	<b>320</b>	<b>610</b>	<b>271</b>	<b>881</b>	<b>646</b>	<b>408</b>	<b>1054</b>	<b>2287</b>		
CINEA	Brussels, BE	European Climate, Infrastructure and Environment Executive Agency	3		3	35	4	39	70	33	103	129	90	219	364		
EACEA	Brussels, BE	European Education and Culture Executive Agency	3	3	6	48	8	56	123	64	187	77	25	102	351		
HaDEA	Brussels, BE	European Health and Digital Executive Agency		1	1	28	3	31	54	22	76	91	53	144	252		
EISMEA	Brussels, BE	European Innovation Council and SMEs Executive Agency		1	1	28	2	30	72	34	106	85	53	138	275		
ERCEA	Brussels, BE	European Research Council Executive Agency	5	3	8	68	11	79	93	47	140	84	58	142	369		
REA	Brussels, BE	Research Executive Agency	7	6	13	73	12	85	198	71	269	180	129	309	676		
<b>Joint undertakings</b>			<b>1</b>	<b>0</b>	<b>1</b>	<b>19</b>	<b>4</b>	<b>23</b>	<b>76</b>	<b>28</b>	<b>104</b>	<b>51</b>	<b>82</b>	<b>133</b>	<b>261</b>		
CBE JU	Brussels, BE	Circular Bio-based Europe Joint Undertaking							1	3	4	4	1	5	9		
CAJU	Brussels, BE	Clean Aviation Joint Undertaking							2	2	4	1		1	5		
CHP	Brussels, BE	Clean Hydrogen Joint Undertaking				1		1		1	1				2		
EU-RAIL	Brussels, BE	Europe's Rail Joint Undertaking				1		1	2	3	5	3	4	7	13		
EHPC	Brussels, BE	European High Performance Computing Joint Undertaking				1	1	2	2	2	4	4	1	5	11		
EIT	Budapest, HU	European Institute of Innovation and Technology					1	1	6	5	11	6	3	9	21		
F4E	Barcelona, ES	Fusion for Energy Joint Undertaking				12	2	14	46	8	54	31	69	100	168		
IHI JU	Brussels, BE	Innovative Health Initiative Joint Undertaking				1		1	7	2	9		3	3	13		
KDT JU	Brussels, BE	Key Digital Technology Joint Undertaking	1		1	3		3	10	2	12	1	1	2	18		
SESAR	Brussels, BE	SESAR Joint Undertaking										1		1	1		
<b>Total Agencies</b>			<b>29</b>	<b>49</b>	<b>78</b>	<b>464</b>	<b>101</b>	<b>565</b>	<b>1315</b>	<b>588</b>	<b>1903</b>	<b>1466</b>	<b>1299</b>	<b>2765</b>	<b>5311</b>		

**Table 25a - Breakdown by nationality in 2020**

			AT	BE	BG	CY	CZ	DE	DK	EE	EL	ES	FI	FR	HR	HU	IE	IT	LT	LU	LV	MT	NL	PL	PT	RO	SE	SI	SK	UK	Oth	Total		
<b>Decentralised agencies</b>			<b>18</b>	<b>65</b>	<b>73</b>	<b>7</b>	<b>34</b>	<b>82</b>	<b>15</b>	<b>27</b>	<b>221</b>	<b>292</b>	<b>56</b>	<b>144</b>	<b>34</b>	<b>76</b>	<b>28</b>	<b>298</b>	<b>51</b>	<b>2</b>	<b>34</b>	<b>14</b>	<b>84</b>	<b>241</b>	<b>127</b>	<b>188</b>	<b>42</b>	<b>27</b>	<b>31</b>	<b>32</b>	<b>9</b>	<b>2352</b>		
BEREC	Riga, LV	Agency for Support for BEREC					1	1										2	2		12		1			1								20
CPVO	Angers, FR	Community Plant Variety Office										1		2				1																4
EUROJUST	The Hague, NL	Eurojust	2		1						1	3		1			1	4	1		1		3			6							24	
EU-OSHA	Bilbao, ES	European Agency for Safety and Health at Work			1					1	1	19		1			1	1								1	1						27	
EASO	Valletta, MT	European Asylum Support Office		2	2					2	12	6	1	7	1	3	1	22	2			12		5	3	2	2		1	1	2	89		
EBA	Paris, FR	European Banking Authority	1		2			3				5	1	3	2	1		8	1				1	2	5	2	2	2	1	3		45		
FRONTEX	Warsaw, PL	European Border and Coast Guard Agency		4	7	1	1	2		1	53	24	2	3	6	6	2	12	14		6	1	1	155	29	48	1	5	2		1	387		
ECDC	Stockholm, SE	European Centre for Disease Prevention and Control	1	2	2		1	6	1	2	3	4	4	7	2	1		9	4		1		1	10	5	11	28	1		1		107		
CEDEFOP	Thessaloniki, EL	European Centre for the Development of Vocational Training			1		1				17							1															20	
ECHA	Helsinki, FI	European Chemicals Agency	1	2	7	1	1	3		2	11	14	36	7		3	2	12			2		2	5	4	10		1	1	3	1	131		
EEA	Copenhagen, DK	European Environment Agency	1	4				5	9		1	10	3	7	2	5	1	9	4				1	3	6	2		2	2	2	1	80		
EFCA	Vigo, ES	European Fisheries Control Agency										10												1	2							1	14	
EFSA	Parma, IT	European Food Safety Authority		4	3			8	1		13	9		5	1	3		57						6	2	3		1	4	3		123		
EUROFUND	Dublin, IE	European Foundation for the Improvement of Living and Working Conditions						1				2		1			3	2							1	1							11	
GSA	Prague, CZ	European GNSS Agency		1	3		16	1	1		7	6	1	3				6				1		1		10		1	2	1		61		
EIGE	Vilnius, LT	European Institute for Gender Equality									1		1	1	1				8		2											14		
EIOPA	Frankfurt a.M., DE	European Insurance and Occupational Pensions Authority		2	3		1	4		1	1	2	1	1	2			4			1					5			2			30		
ELA	Bratislava, SK	European Labour Authority						1			1	1		1				3							2				1			10		
EMSA	Lisbon, PT	European Maritime Safety Agency		5	1			2			2	8			1			4					1		19	1	1			1		46		
EMA	Amsterdam, NL	European Medicines Agency	3	5	13	1	3	4		2	19	27		15	3	9	2	32	6		2		1	14	11	12	3	1	4	6	1	199		
EMCDDA	Lisbon, PT	European Monitoring Centre for Drugs and Drug Addiction		3	1		1						1	2				3						2	16	2						31		
EPPO	Luxembourg, LU	European Public Prosecutor's Office	0	1	0	0	0	0	0	0	1	1	0	0	0	0	1	1	0	0	0	0	0	0	0	2	0	0	0	0	0	7		
ESMA	Paris, FR	European Securities and Markets Authority	1	4	1			1	1		8	4		18		3	1	13			2		3	4		5	1					70		
ETF	Turin, IT	European Training Foundation	1	1			1	1		1	1	1					1	25			1			2		2		1		1	1	41		
ENISA	Heraklion, EL	European Union Agency for Cybersecurity		1	2	1					17	1						1					1			2			1			27		
FRA	Vienna, AT	European Union Agency for Fundamental Rights	5		1		3	1						5		2	2	2					4	3		1	1		1	2		33		
EUROPOL	The Hague, NL	European Union Agency for Law Enforcement Cooperation		3	7	3	2	7		1	13	20	4	6	3	11	2	18	3	1			54	9	15	17	1	2	1	3		206		
CEPOL	Budapest, HU	European Union Agency for Law Enforcement Training	1							1	3	2			2	23		2					1	2	1	6			2			46		
ERA	Valenciennes, FR	European Union Agency for Railways		9				1			1	1		9	1		1		1				1	3	1	2				1		32		
ACER	Ljubljana, SL	European Union Agency for the Cooperation of Energy Regulators		2	1			1			3	3		1	3		1	4						2				9				30		
EU-LISA	Tallinn, EE; Strasbourg, FR	European Union Agency for the Operational Management of Large-Scale IT Systems in the Area of Freedom, Security and Justice	1	3	4			2		11	16	2	1	14		1	2	4	1		3		1	2	1	13						82		
EASA	Cologne, DE	European Union Aviation Safety Agency		3	3		1	24		1	10	8		6	2	2	1	5	1					6	1	10		1	1	1	1	88		
EUIPO	Alicante, ES	European Union Intellectual Property Office		4	6		1	3	2	1	5	97		15		1	3	26	3				5	4	2	9	1		4	3		195		
CDT	Luxembourg, LU	Translation Centre for the Bodies of the European Union			1							1		3	2	2		5		1	1		2		1	2			1			22		
<b>Executive agencies</b>			<b>10</b>	<b>428</b>	<b>70</b>	<b>6</b>	<b>11</b>	<b>58</b>	<b>2</b>	<b>5</b>	<b>176</b>	<b>195</b>	<b>12</b>	<b>197</b>	<b>19</b>	<b>34</b>	<b>9</b>	<b>361</b>	<b>27</b>	<b>4</b>	<b>5</b>	<b>3</b>	<b>18</b>	<b>92</b>	<b>40</b>	<b>153</b>	<b>10</b>	<b>10</b>	<b>20</b>	<b>20</b>	<b>0</b>	<b>1995</b>		
CHAFEA	Luxembourg, LU	Consumers, Health, Agriculture and Food Executive Agency	1	4	1		2	2			6	5		5	1	2		11	2		1			4	1	7		2				57		
EACEA	Brussels, BE	Education, Audiovisual and Culture Executive Agency	2	97	7	1	1	14			15	24	4	43	1	8	3	66	5	2	1		4	8	9	9	1	1	5	5		336		
ERCEA	Brussels, BE	European Research Council Executive Agency	1	96	15	1		11	1	1	38	31		37	4	10	2	57	2				4	16	7	40		1	3	2		380		
EASME	Brussels, BE	Executive Agency for Small and Medium-sized Enterprises	4	62	15	1	3	9		2	28	39	1	50	5	3		69	7	1		1	4	21	7	27	5	4	3	6		377		
INEA	Brussels, BE	Innovation and Networks Executive Agency	1	31	8	2	2	7	1		29	29	2	22	5	1	2	38	7			2	2	18	6	18	1		4	2		240		
REA	Brussels, BE	Research Executive Agency	1	138	24	1	3	15		2	60	67	5	40	3	10	2	120	4	1	3		4	25	10	52	3	2	5	5		605		
<b>Joint Undertakings</b>			<b>0</b>	<b>21</b>	<b>3</b>	<b>1</b>	<b>2</b>	<b>10</b>	<b>0</b>	<b>1</b>	<b>8</b>	<b>83</b>	<b>1</b>	<b>27</b>	<b>2</b>	<b>19</b>	<b>4</b>	<b>35</b>	<b>1</b>	<b>0</b>	<b>0</b>	<b>0</b>	<b>2</b>	<b>8</b>	<b>9</b>	<b>16</b>	<b>1</b>	<b>1</b>	<b>1</b>	<b>3</b>	<b>0</b>	<b>259</b>		
BBI	Brussels, BE	Bio-based Industries Joint Undertaking			1						1	2				1		3								2						10		
Clean Sky	Brussels, BE	Clean Sky 2 Joint Undertaking		2								1					1	2								1						7		
ECSEL	Brussels, BE	ECSEL Joint Undertaking		6							3	2		4										1								16		
EHPC	Brussels, BE	European High Performance Computing Joint Undertaking		1				1			1			1				1								2						7		
EIT	Budapest, HU	European Institute of Innovation and Technology												1	1	14		1					1	2		1			1		22			
FCH2	Brussels, BE	Fuel Cells and Hydrogen 2 Joint Undertaking		1																						2						3		
F4E	Barcelona, ES	Fusion for Energy Joint Undertaking		7	1		2	8		1	1	73	1	14	1	3	1	27	1				1	3	6	6	1			3		161		
IMI2	Brussels, BE	IMI 2 Joint Undertaking			1						2	3		2			1							2	2	2						15		
SESAR	Brussels, BE	SESAR Joint Undertaking				1								1																		2		
S2R	Brussels, BE	Shift2Rail Joint Undertaking		4				1				2		4		1	1	1							1				1			16		
<b>Total Agencies</b>			<b>28</b>	<b>514</b>	<b>146</b>	<b>14</b>	<b>47</b>	<b>150</b>	<b>17</b>	<b>33</b>	<b>405</b>	<b>570</b>	<b>69</b>	<b>368</b>	<b>55</b>	<b>129</b>	<b>41</b>	<b>694</b>	<b>79</b>	<b>6</b>	<b>39</b>	<b>17</b>	<b>104</b>	<b>341</b>	<b>176</b>	<b>357</b>	<b>53</b>	<b>38</b>	<b>52</b>	<b>55</b>	<b>9</b>	<b>4606</b>		

**Table 25b - Breakdown by nationality in 2021**

			AT	BE	BG	CY	CZ	DE	DK	EE	EL	ES	FI	FR	HR	HU	IE	IT	LT	LU	LV	MT	NL	PL	PT	RO	SE	SI	SK	Other	Total	
<b>Decentralised agencies</b>			<b>23</b>	<b>72</b>	<b>88</b>	<b>10</b>	<b>41</b>	<b>96</b>	<b>16</b>	<b>31</b>	<b>330</b>	<b>60</b>	<b>183</b>	<b>46</b>	<b>90</b>	<b>33</b>	<b>401</b>	<b>58</b>	<b>2</b>	<b>36</b>	<b>21</b>	<b>84</b>	<b>264</b>	<b>144</b>	<b>221</b>	<b>39</b>	<b>29</b>	<b>39</b>	<b>276</b>	<b>30</b>	<b>2763</b>	
BEREC	Riga, LV	Agency for Support for BEREC				1	1								1		2	2		13		1										21
CPVO	Angers, FR	Community Plant Variety Office								1		2					2															5
EU-OSHA	Bilbao, ES	European Agency for Safety and Health at Work		1	1		1		1	19		1					1								1	1			1			28
EASO	Valletta, MT	European Asylum Support Office		2	3	4	1	1		2	9	1	8	3	4	1	65	3		15		5	5	3	1		1	28	1		166	
EBA	Paris, FR	European Banking Authority	1	1	2		1	3			5	1	4	3	2		7	1				1	2	5	3	2	1	1	1	1	48	
FRONTEX	Warsaw, PL	European Border and Coast Guard Agency	3	5	18	1	2	5		2	31	4	6	8	10	3	23	17		6	3	1	173	36	68		6	5	70	1	507	
ECDC	Stockholm, SE	European Centre for Disease Prevention and Control	1	4			1	7	1	2	3	4	8	2	1		10	4		1		1	11	6	12	30	2		8	1	120	
CEDEFOP	Thessaloniki, EL	European Centre for the Development of Vocational Training									1						1													16	18	
ECHA	Helsinki, FI	European Chemicals Agency	1	1	7	1	1	3		1	13	38	10	1	3	2	9			2		2	5	4	10		1	2	12	4	133	
EEA	Copenhagen, DK	European Environment Agency	1	4				4	10		11	3	6	2	4		10	4				1	4	6	2		1	2	2	4	81	
EFCA	Vigo, ES	European Fisheries Control Agency									9												1	2							12	
EFSA	Parma, IT	European Food Safety Authority		3	4			9	1		11		8	2	2		70						6	4	4			4	11	2	141	
EUROFUND	Dublin, IE	European Foundation for the Improvement of Living and Working Conditions					1				3		1			2	3						1	1				1			13	
EIGE	Vilnius, LT	European Institute for Gender Equality										1	1					7		1			1							1	12	
EIOPA	Frankfurt a.M., DE	European Insurance and Occupational Pensions Authority		2	3		1	5		1	2		1	2	1		5			2	1		2	4				1	1		34	
ELA	Bratislava, SK	European Labour Authority			1												2						2	2				3	1		11	
EMSA	Lisbon, PT	European Maritime Safety Agency		5	1			2		1	9			1			5					1	1	20	1				3		50	
EMA	Amsterdam, NL	European Medicines Agency	3	5	11	1	2	6	1	2	30		15	5	9	3	35	5		1		2	10	11	10	2	2	5	22	7	205	
EMCDDA	Lisbon, PT	European Monitoring Centre for Drugs and Drug Addiction		4	1		1	1			2	1	3		1		3						2	14	3						36	
EPPO	Luxembourg, LU	European Public Prosecutor's Office		3	2		1	2			1		2			3	7			1						5			3		30	
ESMA	Paris, FR	European Securities and Markets Authority	1	2	1		1	4			3	1	21	1	3	1	20	1		2		2	6	1	4		1		9		85	
ETF	Turin, IT	European Training Foundation	1	1			1	1		1	1					1	26			1			2		2		1			2	41	
EUROJUST	The Hague, NL	European Union Agency for Criminal Justice Cooperation	2	2	2		1			1	4		2		1	1	7	3		1		2	1	1	7		2		2		42	
ENISA	Heraklion, EL	European Union Agency for Cybersecurity			2	1											3						1		2			1	18		28	
FRA	Vienna, AT	European Union Agency for Fundamental Rights	7		2		3	1			1		5		2	2	2					2	2		1	1		1	2		34	
EUROPOL	The Hague, NL	European Union Agency for Law Enforcement Cooperation		5	8	2	2	7			20	4	10	3	11	3	23	5	1			58	9	17	26	1	1	1	19	1	237	
CEPOL	Budapest, HU	European Union Agency for Law Enforcement Training			1				1	2				3	27		3					2	3	1	7			3	5		58	
ERA	Valenciennes, FR	European Union Agency for Railways		10	1			1			1		10	1		1	1	1				1	2	1	3				2	1	37	
ACER	Ljubljana, SL	European Union Agency for the Cooperation of Energy Regulators		2	1			1			3		2	4	2	1	5						2				9		3		35	
EU-LISA	Tallinn, EE; Strasbourg, FR	European Union Agency for the Operational Management of Large-Scale IT Systems in the Area of Freedom, Security and Justice	2	2	5		2	2		14	6	1	21	1	2	2	8			5		2	2	1	11		1		17		107	
EUSPA	Prague, CZ	European Union Agency for the Space Programme		1	2		16	1	1		6	1	4				6				1		1		8			2	5	1	56	
EASA	Cologne, DE	European Union Aviation Safety Agency		4	3		1	24		1	7		6	2	2	1	4	1					6	1	10		1	1	8	2	85	
EUIPO	Alicante, ES	European Union Intellectual Property Office		3	5		2	3	2	1	113		23		1	6	28	3				4	6	2	9	1		4	7	1	224	
CDT	Luxemburg, LU	Translation Centre for the Bodies of the European Union			1						3		3	2	1		5	1	1	1		1		1	2			1		23		
<b>Executive agencies</b>			<b>13</b>	<b>455</b>	<b>84</b>	<b>9</b>	<b>16</b>	<b>67</b>	<b>2</b>	<b>5</b>	<b>221</b>	<b>242</b>	<b>13</b>	<b>211</b>	<b>24</b>	<b>37</b>	<b>13</b>	<b>412</b>	<b>32</b>	<b>4</b>	<b>7</b>	<b>5</b>	<b>21</b>	<b>99</b>	<b>54</b>	<b>176</b>	<b>13</b>	<b>10</b>	<b>24</b>	<b>18</b>	<b>2287</b>	
CINEA	Brussels, BE	European Climate, Infrastructure and Environment Executive Agency	4	50	7	3	3	8	1		42	47	4	37	8	3	1	64	10		1	4	24	7	24	3	2	4	3		364	
EACEA	Brussels, BE	European Education and Culture Executive Agency	2	97	8	1	2	15			18	28	4	44	1	5	2	70	6	2	1		4	7	9	12	1	1	5	6	351	
HaDEA	Brussels, BE	European Health and Digital Executive Agency	3	27	11	1	4	8		1	29	32		18	4	3	1	49	6		1	3		12	10	22		1	5	1	252	
EISMEA	Brussels, BE	European Innovation Council and SMEs Executive Agency	1	48	16		4	8			21	24		28	4	2	4	42	4	1	2	1	5	14	8	25	4	3	3	3	275	
ERCEA	Brussels, BE	European Research Council Executive Agency	2	93	13	2		11	1	1	36	30		37	3	13	2	55	3		1		4	12	7	36	1	1	3	2	369	
REA	Brussels, BE	Research Executive Agency	1	140	29	2	3	17		3	75	81	5	47	4	11	3	132	3	1	2		4	30	13	57	4	2	4	3	676	
<b>Joint Undertakings</b>			<b>0</b>	<b>20</b>	<b>3</b>	<b>0</b>	<b>2</b>	<b>10</b>	<b>0</b>	<b>1</b>	<b>6</b>	<b>90</b>	<b>1</b>	<b>30</b>	<b>2</b>	<b>19</b>	<b>2</b>	<b>33</b>	<b>1</b>	<b>0</b>	<b>0</b>	<b>0</b>	<b>2</b>	<b>5</b>	<b>9</b>	<b>18</b>	<b>1</b>	<b>1</b>	<b>2</b>	<b>3</b>	<b>261</b>	
CBE JU	Brussels, BE	Circular Bio-based Europe Joint Undertaking			1							2				1		4								1					9	
CAJU	Brussels, BE	Clean Aviation Joint Undertaking		1								1						2								1					5	
CHP	Brussels, BE	Clean Hydrogen Joint Undertaking		1																						1					2	
EU-RAIL	Brussels, BE	Europe's Rail Joint Undertaking		4								1		4		1									1			1	1		13	
EHPC	Brussels, BE	European High Performance Computing Joint Undertaking		1				2			1	1		1		1		1						1		2					11	
EIT	Budapest, HU	European Institute of Innovation and Technology												1	1	13		1					1	1		2			1		21	
F4E	Barcelona, ES	Fusion for Energy Joint Undertaking		7	1			2	8		1	1	80	1	16	1	3	1	25	1			1	2	6	7	1			3	168	
IHI JU	Brussels, BE	Innovative Health Initiative Joint Undertaking			1						1	3		2			1								2	3					13	
KDT JU	Brussels, BE	Key Digital Technology Joint Undertaking		6							3	2		5										1		1					18	
SESAR	Brussels, BE	SESAR Joint Undertaking												1																	1	
			<b>36</b>	<b>547</b>	<b>175</b>	<b>19</b>	<b>59</b>	<b>173</b>	<b>18</b>	<b>37</b>	<b>662</b>	<b>74</b>	<b>424</b>	<b>72</b>	<b>146</b>	<b>48</b>	<b>846</b>	<b>91</b>	<b>6</b>	<b>43</b>	<b>26</b>	<b>107</b>	<b>368</b>	<b>207</b>	<b>415</b>	<b>53</b>	<b>40</b>	<b>65</b>	<b>503</b>	<b>51</b>	<b>5311</b>	

## ANNEX

### List of Directorates-General, Services and Offices at the European Commission on 31/12/2021

1. AGRI: Agriculture and Rural Development
2. BUDG: Budget
3. CdP-OSP: Staff Committee - Representative Trade Unions and Staff Associations
4. CLIMA: Climate Action
5. CNECT: Communications Networks, Content and Technology
6. COMM: Communication
7. COMP: Competition
8. DEFIS: Defence Industry and Space
9. DGT: Translation
10. DIGIT: Informatics
11. EAC: Education, Youth, Sport and Culture
12. ECFIN: Economic and Financial Affairs
13. ECHO: European Civil Protection and Humanitarian Aid Operations (ECHO)
14. EMPL: Employment, Social Affairs and Inclusion
15. ENER: Energy
16. ENV: Environment
17. EPSO: European Personnel Selection Office
18. ESTAT: Eurostat
19. FISMA: Financial Stability, Financial Services and Capital Markets Union
20. FPI: Service for Foreign Policy Instruments
21. GROW: Internal Market, Industry, Entrepreneurship and SMEs
22. HERA: European Health Emergency Preparedness and Response Authority
23. HOME: Migration and Home Affairs
24. HR: Human Resources and Security
25. IAS: Internal Audit Service
26. INTPA: International Cooperation and Development (DEVCO in 2020)
27. JRC: Joint Research Centre
28. JUST: Justice and Consumers
29. MARE: Maritime Affairs and Fisheries
30. MOVE: Mobility and Transport
31. NEAR: Neighbourhood and Enlargement Negotiations
32. OIB: Office for Infrastructure and Logistics in Brussels
33. OIL: Office for Infrastructure and Logistics in Luxembourg
34. OLAF: European Anti-Fraud Office
35. OP: Publications Office
36. PMO: Office for the Administration and Payment of Individual Entitlements
37. REFORM: Structural Reform Support
38. REGIO: Regional and Urban Policy
39. RTD: Research and Innovation
40. SANTE: Health and Food Safety
41. SCIC: Interpretation
42. SG: Secretariat-General
43. SJ: Legal Service
44. TAXUD: Taxation and Customs Union
45. TRADE: Trade