



Council of the
European Union

Brussels, 7 October 2022
(OR. en)

13331/22

ACP 112
FIN 1046
PTOM 19

COVER NOTE

From:	Secretary-General of the European Commission, signed by Ms Martine DEPREZ, Director
date of receipt:	7 October 2022
To:	General Secretariat of the Council
No. Cion doc.:	COM(2022) 499 final
Subject:	COMMUNICATION FROM THE COMMISSION TO THE COUNCIL - Financial information on the European Development Fund - European Development Fund (EDF): forecasts of commitments, payments and contributions from the parties to the European Development Fund for 2022, 2023, 2024 and non binding forecasts for the years 2025-2026

Delegations will find attached document COM(2022) 499 final.

Encl.: COM(2022) 499 final



Brussels, 7.10.2022
COM(2022) 499 final

COMMUNICATION FROM THE COMMISSION TO THE COUNCIL

Financial information on the European Development Fund

European Development Fund (EDF): forecasts of commitments, payments and contributions from the parties to the European Development Fund for 2022, 2023, 2024 and non binding forecasts for the years 2025-2026

1. FOREWORD¹

In accordance with Article 19(2) of the Council Regulation (EU) 2018/1877² on the Financial Regulation applicable to the 11th European Development Fund (hereinafter referred to as "11th EDF Financial Regulation"), the Commission presents in this document the estimates of the commitments³, payments and contributions for the period 2022-2024, taking into account the forecasts of the European Investment Bank (EIB).

This document sets out the financial implementation of the EDFs (Ninth to 11th) for 2022 until 2024. In addition, this document makes non-binding estimates for the EDF contributions from the parties to the European Development Fund for the years 2025-2026.

The parties to the European Development Fund contribute funds directly to the EIB for the instruments, which it manages under the Ninth, 10th, and 11th EDFs (the Investment Facility and interest rate subsidies).

2. INTRODUCTION

The Commission and the EIB have updated their forecasts for 2022, 2023 and 2024 for each of the African, Caribbean and Pacific (ACP) countries and the Overseas Countries and Territories (OCTs). The payment forecasts in particular have been compiled with the aim of helping the parties to the European Development Fund to assess as accurately as possible the amounts they need to earmark in their national budgets while ensuring that sufficient financial resources are available for the EDF to avoid liquidity problems.

In accordance with Article 19(2) of the 11th EDF Financial Regulation, the estimates of commitments and payments have been updated following the latest forecasts.

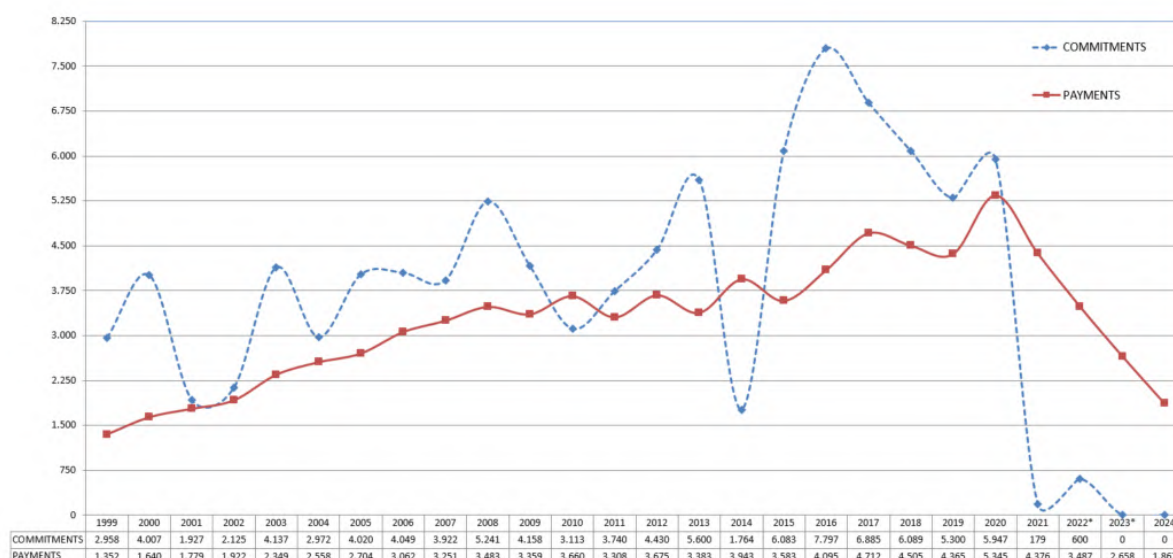
The graph below shows the general evolution in gross commitments and payments since 1999 until 2021 and projections for the period 2022-2024 (Commission and EIB cumulated amounts).

¹ This document takes into account Articles 152 and 153 of the withdrawal agreement of the United Kingdom of Great Britain and Northern Ireland from the European Union and the European Atomic Energy Community, which stipulate that the United Kingdom shall remain party to the EDF until the closure of the 11th EDF and all previous unclosed EDFs; however the United Kingdom's share in decommitted funds from projects under the 11th EDF or previous EDFs shall not be reused.

² Council Regulation (EU) 2018/1877 of 26 November 2018 on the financial regulation applicable to the 11th European Development Fund, and repealing Regulation (EU) 2015/323 (OJ L 307, 3.12.2018, p. 1–21).

³ Commitments of the funds stemming from the reuse of the 10th & 11th EDF according to the COUNCIL DECISION (EU) 2022/1223 of 12 July 2022 concerning the allocation of funds de-committed from projects under the 10th and 11th European Development Funds for the purpose of financing actions addressing the food security crisis and economic shock in African, Caribbean and Pacific (ACP) countries following Russia's war of aggression against Ukraine.

Gross commitments and payments: trend 1999-2024 (EUR million)



Note: Figures from implementation of the European Development Funds until 31 December 2021 (commitments and payments) and forecasts for 2022-2024. Since the sunset clause of the 11th EDF elapsed on 31.12.2020, there are no new commitments with the exception of:

- (1) the funds stemming from reflows under the ACP Investment Facility from operations under the 9th 10th and 11th EDFs (ref prolongation of the IF into 2021, by the Council Decision 2020/2233 of the Council), and
- (2) commitments of the funds stemming from the reuse of the 10th & 11th EDF reserve under the Council Decision 2022/1223 (page 147), regarding the special measures for the EU response to the food security crisis and economic shock in African, Caribbean and Pacific (ACP) countries following Russia's war of aggression against Ukraine.

3. FINANCIAL FORECASTS FOR 2022 - 2024 (EUR MILLION)

The following table provides an update of the commitments, the payments and of the contributions, based on the Commission's latest forecasts.

Forecasts 2022-2024 (*)		2022	2023	2024
Commitments	Commission(**)	600	0	0
	EIB	0	0	0
	Total	600	0	0
Payments	Commission	2 500	1 800	1 300
	EIB	987	858	567
	Total	3 487	2 658	1 867
Contributions	Commission (11th EDF)	2 500	1 800	1 300
	EIB (11th EDF)	300	300	300
	Total	2 800	2 100	1 600

* Gross amounts, i.e. no decommitments or recoveries/reflows have been deducted. This approach is in line with that used for the general budget of the EU.

** Commitments of the funds stemming from the reuse of the 10th & 11th EDF reserve under the Council Decision 2022/1223 of 12 July 2022 (page 147), for the purpose of financing actions addressing the food security crisis and economic shock in African, Caribbean and Pacific (ACP) countries following Russia's war of aggression against Ukraine.

4. NON-BINDING ESTIMATES OF CONTRIBUTIONS FOR 2025 – 2026 (EUR MILLION)

Forecasts 2025-2026 (*)		2025	2026
Contributions	Commission (11th EDF)	900	600
	EIB (11th EDF) (**)	9	0
	Total	909	600

*Art.19 (2) 11th EDF Financial Regulation (EU 2018/1877): indicative, non-binding forecast based on a statistical approach for the expected annual amounts of contributions

**On the basis of the current forecasts, the EIB will have called all its share of the 11th EDF by the end of 2025.

5. FINANCIAL IMPLEMENTATION FORECASTS FOR 2022-2024

Attachments 1, 2 and 3 show respectively the forecasts of commitments, forecasts of payments and the financial situation compared with previous forecasts for the period 2022-2026.

Attachments 4 and 5 show respectively the contributions for 2023 and for 2024 per instalment and per EDF party. Attachment 6 shows the yearly contributions for the period 2023-2026 per EDF party.

For 2022 and 2023, the estimates for payments and Member State contributions (Commission) remain unchanged compared to the June 2022 Communication. Our estimations for the years after 2023 confirm the decreasing trend of payments.

With respect to the non-committed and decommitted funds from the Ninth EDF, the Commission proposes to refund to the “EU-15 MS” the amount of EUR 42.5 million currently available in the Ninth reserve⁴. This refund will be done by reducing the amount to be paid by the “EU-15 MS” for the first instalment 2023 (i.e the same approach as last year). Any remaining balances in the Ninth EDF reserve will continue, in principle, to be refunded once a year until the complete restitution of non-committed or decommitted funds.

⁴ With this refund, the total amount refunded to the “EU-15 MS” from the Ninth reserve, since 2015, will reach EUR 1.9 billion

5.1. Attachment 1: Forecasts of commitments⁵ for 2022 to 2024 (EUR million)

	Figures for 2022		Figures for 2023		Figures for 2024	
	Communication June 2022	Communication October 2022	Communication June 2022	Communication October 2022	Communication June 2022	Communication October 2022
Regions						
Eastern and Central Africa						
West and Southern Africa						
Caribbean						
Pacific						
Sub-total						
Other						
Special measures for Food Security		600				
Human Development, Human rights						
EU-Africa, African Peace Facility						
EUTF Africa						
Planet and Prosperity						
Resources, Evaluation, Process						
DG ECHO, EACEA, DG EAC						
Sub-total						
Total European Commission	0	600	0	0	0	0
Investment Facility subsidies (*)		0		0		0
Total EIB	0	0	0	0	0	0
TOTAL EC+EIB	0	600	0	0	0	0

* Including subsidy for technical assistance and interest rate subsidies from the current EDF and IRS disbursement under previous EDFs

	Figures for 2022		Figures for 2023		Figures for 2024	
	Communication June 2022	Communication October 2022	Communication June 2022	Communication October 2022	Communication June 2022	Communication on October 2022
Investment facility revolving fund**	0	0		0		0

**The commitment under the revolving fund cannot be assimilated to budgetary commitments. It shall be therefore reported separately.

⁵ Gross commitments, i.e. without de-commitments being deducted.

5.2. Attachment 2: Forecasts of payments⁶ for 2022 to 2024 (EUR million)

	Figures for 2022		Figures for 2023		Figures for 2024	
	Communication June 2022	Communication October 2022	Communication June 2022	Communication October 2022	Communication June 2022	Communication October 2022
Regions						
Eastern and Central Africa	506	425				
West and Southern Africa	1 003	975				
Caribbean	156	115				
Pacific	84	79				
Sub-total*	1 749	1 594				
Other						
Special measures for Food Security		211				
Human Development, Human rights	60	46				
EU-Africa, African Peace Facility	95	97				
EUTF Africa	331	318				
Planet and Prosperity	198	175				
Resources, Evaluation, Process	52	51				
DG ECHO, EACEA, DG EAC	15	8				
Sub-total*	751	906				
Total European Commission*	2 500	2 500	1 800	1 800		1 300
Investment Facility subsidies (**)	233	233	208	208		151
Total EIB***	233	233	208	208		151
TOTAL European Commission + EIB*	2 733	2 733	2 008	2 008		1 451

*Due to the rounding effects, the sum of individual rounded amounts shown may differ slightly from the corresponding totals

** Including subsidy for technical assistance and interest rate subsidies from the current EDF and IRS disbursement under previous EDFs

	Figures for 2022		Figures for 2023		Figures for 2024	
	Communication June 2022	Communication October 2022	Communication June 2022	Communication October 2022	Communication June 2022	Communication October 2022
Investment facility revolving fund ***	754	754	650	650		416

⁶ Gross payments, i.e. without recoveries being deducted.

5.3. Attachment 3: Financial forecasts for 2022-2024 and non-binding estimations for 2025-2026 (EUR million)

		Communication June 2022 ¹			Communication October 2022 ¹		
		Commission	EIB	TOTAL	Commission	EIB	TOTAL
	Balance at 31/12/2021 ⁴	994	472	1 467	994	472	1 467
2022	Member States & UK Contributions for 2022:	2 500	300	2 800	2 500	300	2 800
	<i>1st instalment</i>	1 100	100	1 200	1 100	100	1 200
	<i>2nd instalment</i>	800	100	900	800	100	900
	<i>3rd instalment</i>	600	100	700	600	100	700
	Reflows ²		348	348		348	348
	Contrib. & Adjust. 2022 received in 2021	- 156		- 156	- 156		- 156
	Recoveries, interest and adjustment	40		40	40		40
	Refund of 9 th EDF	- 43		- 43	- 43		- 43
	Total payments ³	- 2 500	- 987	- 3 487	- 2 500	- 987	- 3 487
	Balance at 31/12/2022 ⁴	835	133	969	835	133	969
2023	Member States & UK Contributions for 2023:	1 800	300	2 100	1 800	300	2 100
	<i>1st instalment</i>				750	100	850
	<i>2nd instalment</i>				650	100	750
	<i>3rd instalment</i>				400	100	500
	Reflows ²		384	384		384	384
	Contrib. & Adjust. 2023 received in 2022				30		30
	Recoveries, interest and adjustment				-42,5		-42,5
	Refund of 9 th EDF						
Total payments ³	- 1 800	- 858	- 2 658	- 1 800	- 858	- 2 658	
	Balance at 31/12/2023 ⁴	835	- 41⁶	795	823	- 41⁶	782
2024	Member States & UK Contributions for 2024:	1 500	300	1 800	1 300	300	1 600
	<i>1st instalment</i>				600	100	700
	<i>2nd instalment</i>				400	100	500
	<i>3rd instalment</i>				300	100	400
	Reflows ²					381	381
	Contrib. & Adjust. 2024 received in 2023						
	Recoveries, interest and adjustment						
Refund of 9 th EDF							
Total payments ³				- 1 300	-567	- 1 867	
	Balance at 31/12/2024 ⁴				823	73	896
2025	Member States & UK Contributions for 2025 ⁵	900	9	909	900	9	909
2026	Member States & UK Contributions for 2026 ⁵				600	0	600

¹ Funds available for operations;

² Net of write-offs, EIB management fees and other costs such as swaps/hedging; does not include the UK share of reflows, according to art. 153 of the Withdrawal Agreement these shall not be reused. Refer to IF Financial Statements for full details.

³ Including interest rates subsidies under the previous EDFs;

⁴ Balances do not include: (i) Cofinancings received, (ii) Receipts in bank not yet allocated to a specific EDF line

⁵ Art.19 (2)(d): Financial Regulation: non-binding forecast based on a statistical approach for the expected annual contributions

⁶ Due to the nature of the Investment Facility, please consult the IF Financial Statements for the complete view and detailed balance as at year end

5.4. Attachment 4: Member States and the UK contributions for 2023 (EUR)

MEMBER STATES & UK	11th EDF Key (%)	1st instalment		2nd instalment		3rd instalment		Total Commission	Total EIB	Total 2023
		Commission 11th EDF	EIB 11th EDF	Commission 11th EDF	EIB 11th EDF	Commission 11th EDF	EIB 11th EDF			
BELGIUM	3,24927	24 369 525	3 249 270	21 120 255	3 249 270	12 997 080	3 249 270	58 486 860	9 747 810	68 234 670
BULGARIA	0,21853	1 638 975	218 530	1 420 445	218 530	874 120	218 530	3 933 540	655 590	4 589 130
CZECHIA	0,79745	5 980 875	797 450	5 183 425	797 450	3 189 800	797 450	14 354 100	2 392 350	16 746 450
DENMARK	1,98045	14 853 375	1 980 450	12 872 925	1 980 450	7 921 800	1 980 450	35 648 100	5 941 350	41 589 450
GERMANY	20,57980	154 348 500	20 579 800	133 768 700	20 579 800	82 319 200	20 579 800	370 436 400	61 739 400	432 175 800
ESTONIA	0,08635	647 625	86 350	561 275	86 350	345 400	86 350	1 554 300	259 050	1 813 350
IRELAND	0,94006	7 050 450	940 060	6 110 390	940 060	3 760 240	940 060	16 921 080	2 820 180	19 741 260
GREECE	1,50735	11 305 125	1 507 350	9 797 775	1 507 350	6 029 400	1 507 350	27 132 300	4 522 050	31 654 350
SPAIN	7,93248	59 493 600	7 932 480	51 561 120	7 932 480	31 729 920	7 932 480	142 784 640	23 797 440	166 582 080
FRANCE	17,81269	133 595 175	17 812 690	115 782 485	17 812 690	71 250 760	17 812 690	320 628 420	53 438 070	374 066 490
CROATIA	0,22518	1 688 850	225 180	1 463 670	225 180	900 720	225 180	4 053 240	675 540	4 728 780
ITALY	12,53009	93 975 675	12 530 090	81 445 585	12 530 090	50 120 360	12 530 090	225 541 620	37 590 270	263 131 890
CYPRUS	0,11162	837 150	111 620	725 530	111 620	446 480	111 620	2 009 160	334 860	2 344 020
LATVIA	0,11612	870 900	116 120	754 780	116 120	464 480	116 120	2 090 160	348 360	2 438 520
LITHUANIA	0,18077	1 355 775	180 770	1 175 005	180 770	723 080	180 770	3 253 860	542 310	3 796 170
LUXEMBOURG	0,25509	1 913 175	255 090	1 658 085	255 090	1 020 360	255 090	4 591 620	765 270	5 356 890
HUNGARY	0,61456	4 609 200	614 560	3 994 640	614 560	2 458 240	614 560	11 062 080	1 843 680	12 905 760
MALTA	0,03801	285 075	38 010	247 065	38 010	152 040	38 010	684 180	114 030	798 210
NETHERLANDS	4,77678	35 825 850	4 776 780	31 049 070	4 776 780	19 107 120	4 776 780	85 982 040	14 330 340	100 312 380
AUSTRIA	2,39757	17 981 775	2 397 570	15 584 205	2 397 570	9 590 280	2 397 570	43 156 260	7 192 710	50 348 970
POLAND	2,00734	15 055 050	2 007 340	13 047 710	2 007 340	8 029 360	2 007 340	36 132 120	6 022 020	42 154 140
PORTUGAL	1,19679	8 975 925	1 196 790	7 779 135	1 196 790	4 787 160	1 196 790	21 542 220	3 590 370	25 132 590
ROMANIA	0,71815	5 386 125	718 150	4 667 975	718 150	2 872 600	718 150	12 926 700	2 154 450	15 081 150
SLOVENIA	0,22452	1 683 900	224 520	1 459 380	224 520	898 080	224 520	4 041 360	673 560	4 714 920
SLOVAKIA	0,37616	2 821 200	376 160	2 445 040	376 160	1 504 640	376 160	6 770 880	1 128 480	7 899 360
FINLAND	1,50909	11 318 175	1 509 090	9 809 085	1 509 090	6 036 360	1 509 090	27 163 620	4 527 270	31 690 890
SWEDEN	2,93911	22 043 325	2 939 110	19 104 215	2 939 110	11 756 440	2 939 110	52 903 980	8 817 330	61 721 310
UNITED KINGDOM	14,67862	110 089 650	14 678 620	95 411 030	14 678 620	58 714 480	14 678 620	264 215 160	44 035 860	308 251 020
TOTAL EU-27 & UK	100,00	750 000 000	100 000 000	650 000 000	100 000 000	400 000 000	100 000 000	1 800 000 000	300 000 000	2 100 000 000

5.5. Attachment 5: Member States and the UK contributions for 2024 (EUR)

MEMBER STATES & UK	11th EDF Key (%)	1st instalment		2nd instalment		3rd instalment		Total Commission	Total EIB	Total 2024
		Commission 11th EDF	EIB 11th EDF	Commission 11th EDF	EIB 11th EDF	Commission 11th EDF	EIB 11th EDF			
BELGIUM	3,24927	19 495 620	3 249 270	12 997 080	3 249 270	9 747 810	3 249 270	42 240 510	9 747 810	51 988 320
BULGARIA	0,21853	1 311 180	218 530	874 120	218 530	655 590	218 530	2 840 890	655 590	3 496 480
CZECHIA	0,79745	4 784 700	797 450	3 189 800	797 450	2 392 350	797 450	10 366 850	2 392 350	12 759 200
DENMARK	1,98045	11 882 700	1 980 450	7 921 800	1 980 450	5 941 350	1 980 450	25 745 850	5 941 350	31 687 200
GERMANY	20,57980	123 478 800	20 579 800	82 319 200	20 579 800	61 739 400	20 579 800	267 537 400	61 739 400	329 276 800
ESTONIA	0,08635	518 100	86 350	345 400	86 350	259 050	86 350	1 122 550	259 050	1 381 600
IRELAND	0,94006	5 640 360	940 060	3 760 240	940 060	2 820 180	940 060	12 220 780	2 820 180	15 040 960
GREECE	1,50735	9 044 100	1 507 350	6 029 400	1 507 350	4 522 050	1 507 350	19 595 550	4 522 050	24 117 600
SPAIN	7,93248	47 594 880	7 932 480	31 729 920	7 932 480	23 797 440	7 932 480	103 122 240	23 797 440	126 919 680
FRANCE	17,81269	106 876 140	17 812 690	71 250 760	17 812 690	53 438 070	17 812 690	231 564 970	53 438 070	285 003 040
CROATIA	0,22518	1 351 080	225 180	900 720	225 180	675 540	225 180	2 927 340	675 540	3 602 880
ITALY	12,53009	75 180 540	12 530 090	50 120 360	12 530 090	37 590 270	12 530 090	162 891 170	37 590 270	200 481 440
CYPRUS	0,11162	669 720	111 620	446 480	111 620	334 860	111 620	1 451 060	334 860	1 785 920
LATVIA	0,11612	696 720	116 120	464 480	116 120	348 360	116 120	1 509 560	348 360	1 857 920
LITHUANIA	0,18077	1 084 620	180 770	723 080	180 770	542 310	180 770	2 350 010	542 310	2 892 320
LUXEMBOURG	0,25509	1 530 540	255 090	1 020 360	255 090	765 270	255 090	3 316 170	765 270	4 081 440
HUNGARY	0,61456	3 687 360	614 560	2 458 240	614 560	1 843 680	614 560	7 989 280	1 843 680	9 832 960
MALTA	0,03801	228 060	38 010	152 040	38 010	114 030	38 010	494 130	114 030	608 160
NETHERLANDS	4,77678	28 660 680	4 776 780	19 107 120	4 776 780	14 330 340	4 776 780	62 098 140	14 330 340	76 428 480
AUSTRIA	2,39757	14 385 420	2 397 570	9 590 280	2 397 570	7 192 710	2 397 570	31 168 410	7 192 710	38 361 120
POLAND	2,00734	12 044 040	2 007 340	8 029 360	2 007 340	6 022 020	2 007 340	26 095 420	6 022 020	32 117 440
PORTUGAL	1,19679	7 180 740	1 196 790	4 787 160	1 196 790	3 590 370	1 196 790	15 558 270	3 590 370	19 148 640
ROMANIA	0,71815	4 308 900	718 150	2 872 600	718 150	2 154 450	718 150	9 335 950	2 154 450	11 490 400
SLOVENIA	0,22452	1 347 120	224 520	898 080	224 520	673 560	224 520	2 918 760	673 560	3 592 320
SLOVAKIA	0,37616	2 256 960	376 160	1 504 640	376 160	1 128 480	376 160	4 890 080	1 128 480	6 018 560
FINLAND	1,50909	9 054 540	1 509 090	6 036 360	1 509 090	4 527 270	1 509 090	19 618 170	4 527 270	24 145 440
SWEDEN	2,93911	17 634 660	2 939 110	11 756 440	2 939 110	8 817 330	2 939 110	38 208 430	8 817 330	47 025 760
UNITED KINGDOM	14,67862	88 071 720	14 678 620	58 714 480	14 678 620	44 035 860	14 678 620	190 822 060	44 035 860	234 857 920
TOTAL EU-27 & UK	100,00	600 000 000	100 000 000	400 000 000	100 000 000	300 000 000	100 000 000	1 300 000 000	300 000 000	1 600 000 000

5.6. Attachment 6: Member States and the UK contributions for 2022-2026 (EUR)

MEMBER STATES & UK	11th EDF Key (%)	2022		2023		2024		2025		2026	
		Commission 11th EDF	EIB 11th EDF	Commission 11th EDF	EIB 11th EDF	Commission 11th EDF	EIB 11th EDF	Commission 11th EDF	EIB 11th EDF	Commission 11th EDF	EIB ⁷ 11th EDF
BELGIUM	3,24927	81 231 750	9 747 810	58 486 860	9 747 810	42 240 510	9 747 810	29 243 430	292 434	19 495 620	
BULGARIA	0,21853	5 463 250	655 590	3 933 540	655 590	2 840 890	655 590	1 966 770	19 668	1 311 180	
CZECHIA	0,79745	19 936 250	2 392 350	14 354 100	2 392 350	10 366 850	2 392 350	7 177 050	71 771	4 784 700	
DENMARK	1,98045	49 511 250	5 941 350	35 648 100	5 941 350	25 745 850	5 941 350	17 824 050	178 241	11 882 700	
GERMANY	20,57980	514 495 000	61 739 400	370 436 400	61 739 400	267 537 400	61 739 400	185 218 200	1 852 182	123 478 800	
ESTONIA	0,08635	2 158 750	259 050	1 554 300	259 050	1 122 550	259 050	777 150	7 772	518 100	
IRELAND	0,94006	23 501 500	2 820 180	16 921 080	2 820 180	12 220 780	2 820 180	8 460 540	84 605	5 640 360	
GREECE	1,50735	37 683 750	4 522 050	27 132 300	4 522 050	19 595 550	4 522 050	13 566 150	135 662	9 044 100	
SPAIN	7,93248	198 312 000	23 797 440	142 784 640	23 797 440	103 122 240	23 797 440	71 392 320	713 923	47 594 880	
FRANCE	17,81269	445 317 250	53 438 070	320 628 420	53 438 070	231 564 970	53 438 070	160 314 210	1 603 142	106 876 140	
CROATIA	0,22518	5 629 500	675 540	4 053 240	675 540	2 927 340	675 540	2 026 620	20 266	1 351 080	
ITALY	12,53009	313 252 250	37 590 270	225 541 620	37 590 270	162 891 170	37 590 270	112 770 810	1 127 708	75 180 540	
CYPRUS	0,11162	2 790 500	334 860	2 009 160	334 860	1 451 060	334 860	1 004 580	10 046	669 720	
LATVIA	0,11612	2 903 000	348 360	2 090 160	348 360	1 509 560	348 360	1 045 080	10 451	696 720	
LITHUANIA	0,18077	4 519 250	542 310	3 253 860	542 310	2 350 010	542 310	1 626 930	16 269	1 084 620	
LUXEMBOURG	0,25509	6 377 250	765 270	4 591 620	765 270	3 316 170	765 270	2 295 810	22 958	1 530 540	
HUNGARY	0,61456	15 364 000	1 843 680	11 062 080	1 843 680	7 989 280	1 843 680	5 531 040	55 310	3 687 360	
MALTA	0,03801	950 250	114 030	684 180	114 030	494 130	114 030	342 090	3 421	228 060	
NETHERLANDS	4,77678	119 419 500	14 330 340	85 982 040	14 330 340	62 098 140	14 330 340	42 991 020	429 910	28 660 680	
AUSTRIA	2,39757	59 939 250	7 192 710	43 156 260	7 192 710	31 168 410	7 192 710	21 578 130	215 781	14 385 420	
POLAND	2,00734	50 183 500	6 022 020	36 132 120	6 022 020	26 095 420	6 022 020	18 066 060	180 661	12 044 040	
PORTUGAL	1,19679	29 919 750	3 590 370	21 542 220	3 590 370	15 558 270	3 590 370	10 771 110	107 711	7 180 740	
ROMANIA	0,71815	17 953 750	2 154 450	12 926 700	2 154 450	9 335 950	2 154 450	6 463 350	64 634	4 308 900	
SLOVENIA	0,22452	5 613 000	673 560	4 041 360	673 560	2 918 760	673 560	2 020 680	20 207	1 347 120	
SLOVAKIA	0,37616	9 404 000	1 128 480	6 770 880	1 128 480	4 890 080	1 128 480	3 385 440	33 854	2 256 960	
FINLAND	1,50909	37 727 250	4 527 270	27 163 620	4 527 270	19 618 170	4 527 270	13 581 810	135 818	9 054 540	
SWEDEN	2,93911	73 477 750	8 817 330	52 903 980	8 817 330	38 208 430	8 817 330	26 451 990	264 520	17 634 660	
UNITED KINGDOM	14,67862	366 965 500	44 035 860	264 215 160	44 035 860	190 822 060	44 035 860	132 107 580	1 321 076	88 071 720	
TOTAL EU-27 & UK	100,00	2 500 000 000	300 000 000	1 800 000 000	300 000 000	1 300 000 000	300 000 000	900 000 000	9 000 000	600 000 000	
		2 800 000 000		2 100 000 000		1 600 000 000		909 000 000		600 000 000	

⁷ On the basis of the current forecasts, the EIB will have called all its share of the 11th EDF by the end of 2025