



EUROPEAN UNION

THE EUROPEAN PARLIAMENT

THE COUNCIL

**Brussels, 28 May 2024
(OR. en)**

2021/0420(COD)

**PE-CONS 56/24
ADD 26**

**TRANS 121
CODEC 632**

LEGISLATIVE ACTS AND OTHER INSTRUMENTS

Subject: REGULATION OF THE EUROPEAN PARLIAMENT AND OF THE COUNCIL on Union guidelines for the development of the trans-European transport network, amending Regulation (EU) 2021/1153 and Regulation (EU) No 913/2010 and repealing Regulation (EU) 1315/2013



ANNEX IV

**INDICATIVE MAPS OF THE TRANS-EUROPEAN TRANSPORT NETWORK
EXTENDED TO SPECIFIC THIRD COUNTRIES**



Indicative Extension to Neighbouring Countries
 Comprehensive & Core Networks: Inland waterways and ports **Western Balkans Region**



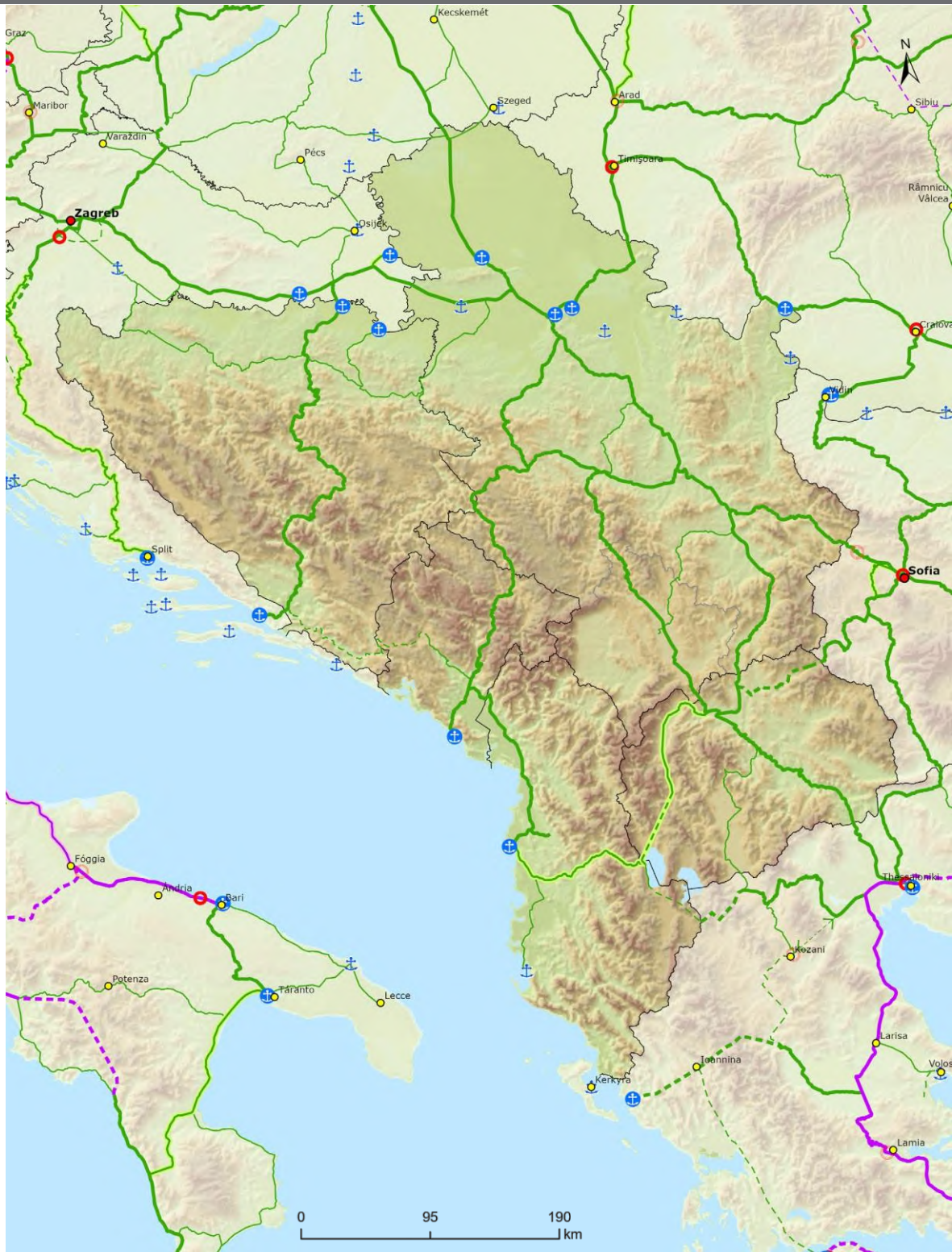
Core	Comprehensive	Core	Urban Nodes
Inland Waterways	Ports	Ports	Capitals
Inland Waterways / New Construction			Urban Nodes

TENtec



Indicative Extension to Neighbouring Countries
 Core & Comprehensive Networks: Rail freight, ports and rail-road terminals
 /BRT/ Western Balkans Region

C



Railways Core	Railways Extended Core	Railways Comprehensive	Compr Core	Urban Nodes
<ul style="list-style-type: none"> Conventional Conventional / New Constr. ≥ 200 km/h ≥ 200 km/h / New Constr. 	<ul style="list-style-type: none"> Conventional Conventional / New Constr. ≥ 200 km/h ≥ 200 km/h / New Constr. 	<ul style="list-style-type: none"> Conventional Conventional / New Constr. ≥ 200 km/h ≥ 200 km/h / New Constr. Projected 	<ul style="list-style-type: none"> Ports RRT 	<ul style="list-style-type: none"> Capitals Urban Nodes

TENtec



Indicative Extension to Neighbouring Countries Core & Comprehensive Networks: Rail passengers and airports
Western Balkans Region

C



Railways Core		Railways Extended Core		Railways Comprehensive		Compr Core		Urban Nodes	
	Conventional		Conventional		Conventional				Capitals
	Conventional / New Constr.		Conventional / New Constr.		Conventional / New Constr.				Urban Nodes
	≥ 200 km/h		≥ 200 km/h		≥ 200 km/h				
	≥ 200 km/h / New Constr.		≥ 200 km/h / New Constr.		≥ 200 km/h / New Constr.				
					Projected				

TENtec



Indicative Extension to Neighbouring Countries
 Core & Comprehensive Networks: Roads, ports, rail-road terminals and airports **Western Balkans Region**

C



Road	Road / New Constr.	Road / New Constr.	Projected	Ports	RRT	Capitals
Road / New Constr.	Road / New Constr.	Road / New Constr.	Projected	Airports	Urban Nodes	

TENtec