



EUROPEAN UNION

THE EUROPEAN PARLIAMENT

THE COUNCIL

Brussels, 22 November 2013
(OR. en)

2011/0294 (COD)

PE-CONS 42/13
ADD 5

TRANS 316
ECOFIN 533
ENV 546
RECH 265
CODEC 1403

LEGISLATIVE ACTS AND OTHER INSTRUMENTS

Subject: REGULATION OF THE EUROPEAN PARLIAMENT AND OF THE
COUNCIL on Union guidelines for the development of the trans-European
transport network and repealing Decision No 661/2010/EU



8.1. Comprehensive & Core Networks: Inland waterways and ports

BE BG CZ DK DE EE IE EL ES FR **HR IT** CY LV LT LU HU **MT** NL AT PL PT RO SI SK FI SE UK



| | | | | | | | | | | | |
|--|--------------------------------------|--|---|--|------------------------------------|--|---------------|--|------|--|-------|
| | Core Inland Waterways / Completed | | Core Inland Waterways / To be upgraded | | Core Inland Waterways / Planned | | Comprehensive | | Core | | Ports |
|--|--------------------------------------|--|---|--|------------------------------------|--|---------------|--|------|--|-------|



8.2. Comprehensive Network: Railways, ports and rail-road terminals (RRT)
 Core Network: Railways (freight), ports and rail-road terminals (RRT)

BE BG CZ DK DE EE IE EL ES FR HR IT CY LV LT LU HU MT NL AT PL PT RO SI SK FI SE UK



| | | | | | | | | |
|--|--|------------------------------------|--|--|-----------------------------------|--|--|-------|
| | | Conventional rail / Completed | | | High speed rail / Completed | | | Ports |
| | | Conventional rail / To be upgraded | | | To be upgraded to high speed rail | | | RRT |
| | | Conventional rail / Planned | | | High speed rail / Planned | | | |



8.3. Comprehensive Network: Railways and airports
 Core Network: Railways (passengers) and airports

BE BG CZ DK DE EE IE EL ES FR HR IT CY LV LT LU HU MT NL AT PL PT RO SI SK FI SE UK



| Comprehensive | Core | Conventional rail / Completed | Comprehensive | Core | High speed rail / Completed | Comprehensive | Core | Ajruporti |
|---------------|------|------------------------------------|---------------|------|-----------------------------------|---------------|------|-----------|
| | | | | | | | | |
| | | Conventional rail / To be upgraded | | | To be upgraded to high speed rail | | | |
| | | Conventional rail / Planned | | | High speed rail / Planned | | | |



8.4. Comprehensive & Core Network:
Roads, ports, rail-road terminals and airports

BE BG CZ DK DE EE IE EL ES FR HR IT CY LV LT LU HU MT NL AT PL PT RO SI SK FI SE UK

8

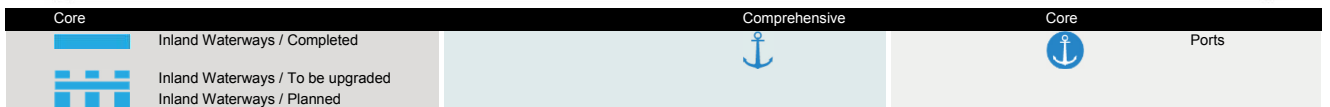


| | | | | | | | | | | | | | | |
|--|---------------|--|------|-----------------------|--|---------------|--|------|-------|--|---------------|--|------|----------|
| | Comprehensive | | Core | Road / Completed | | Comprehensive | | Core | Ports | | Comprehensive | | Core | Airports |
| | | | | Road / To be upgraded | | | | | RRT | | | | | |
| | | | | Road / Planned | | | | | | | | | | |



9.1. Comprehensive & Core Networks:
Inland waterways and ports

BE BG CZ DK DE EE IE EL ES FR HR IT CY LV LT LU HU MT NL AT PL PT **RO** SI SK FI SE UK





9.2. Comprehensive Network: Railways, ports and rail-road terminals (RRT)
 Core Network: Railways (freight), ports and rail-road terminals (RRT)

BE BG CZ DK DE EE IE EL ES FR HR IT CY LV LT LU HU MT NL AT PL PT RO SI SK FI SE UK

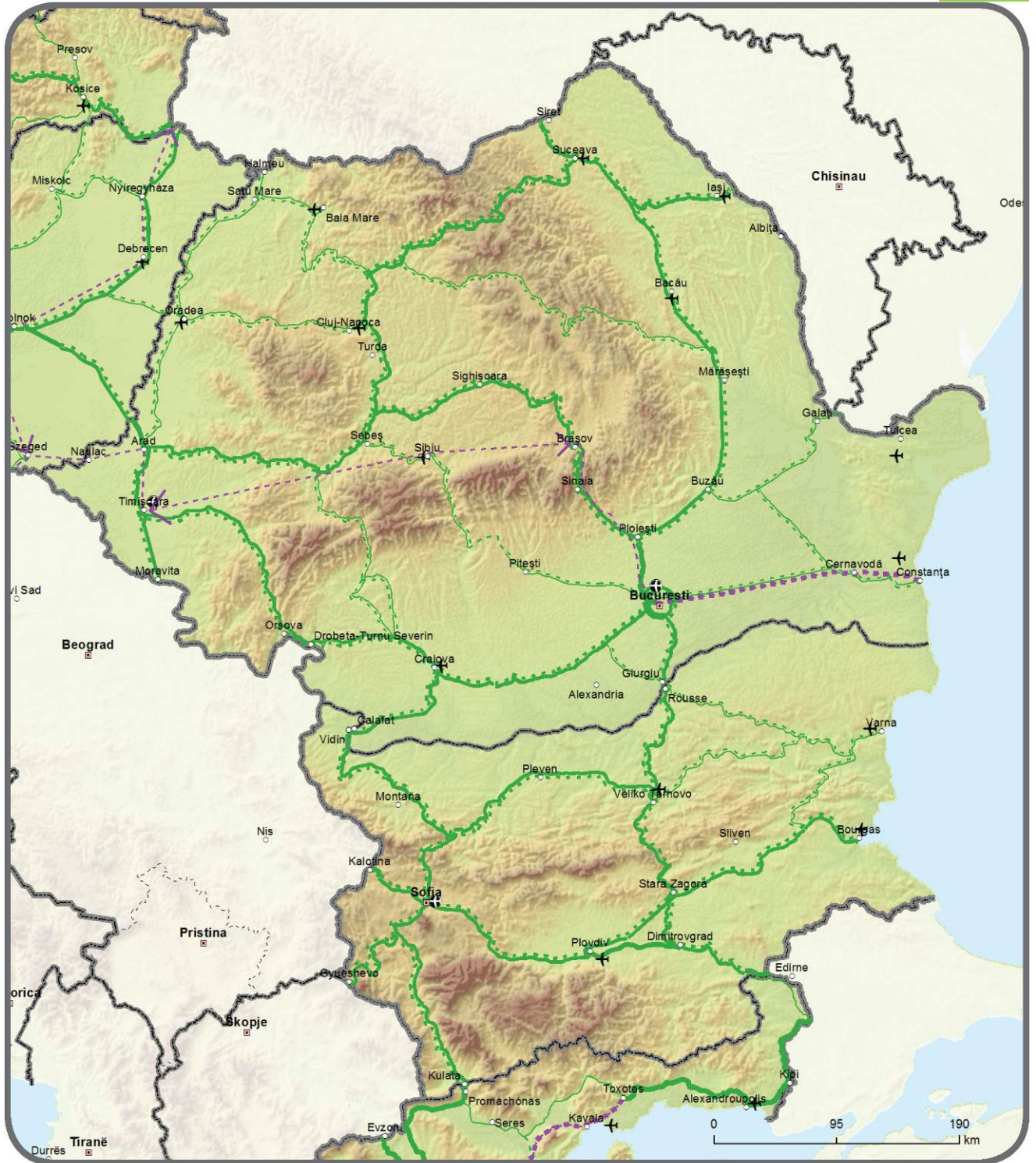


| | | | | | | | | | | | | | | |
|--|--|-------------------------------|--|--|------------------------------------|--|--|-----------------------------|--|--|-------|--|--|-----|
| | | Conventional rail / Completed | | | Conventional rail / To be upgraded | | | Conventional rail / Planned | | | Ports | | | RRT |
| | | High speed rail / Completed | | | To be upgraded to high speed rail | | | High speed rail / Planned | | | | | | |



9.3. Comprehensive Network: Railways and airports
 Core Network: Railways (passengers) and airports

BE BG CZ DK DE EE IE EL ES FR HR IT CY LV LT LU HU MT NL AT PL PT RO SI SK FI SE UK



| Comprehensive | | Core | | Comprehensive | | Core | | Comprehensive | Core | Airports |
|-------------------------------|-------------------------------|-----------------------------|-----------------------------|------------------------------------|------------------------------------|-----------------------------------|-----------------------------------|---------------|------|----------|
| | | | | | | | | | | Airports |
| Conventional rail / Completed | Conventional rail / Completed | High speed rail / Completed | High speed rail / Completed | Conventional rail / To be upgraded | Conventional rail / To be upgraded | To be upgraded to high speed rail | To be upgraded to high speed rail | | | |
| Conventional rail / Planned | Conventional rail / Planned | High speed rail / Planned | High speed rail / Planned | | | | | | | |



9.4. Comprehensive & Core Network:
Roads, ports, rail-road terminals and airports

BE BG CZ DK DE EE IE EL ES FR HR IT CY LV LT LU HU MT NL AT PL PT RO SI SK FI SE UK



| | | | | | | | | |
|--|--|-----------------------|--|--|-------|--|--|----------|
| | | Road / Completed | | | Ports | | | Airports |
| | | Road / To be upgraded | | | RRT | | | |
| | | Road / Planned | | | | | | |